



Qingdao Longwin Industry Co.,Ltd which was established in 2006 ,mainly dealing with manufacturer and sale of wheelbarrow, garden carts, garage racking & shelving, ATV/UTV trailer products. At present ,the company covers an area of 12000 square meters ,with more than 100 skilled employees. Products are sold to more than 30 countries and region such as USA,Europe,Australia, Canada.

The company appreciates the quality control and safety performance on the products very much . It has acquired the ISO9001 Quality System Certificate & BSCI . Moreover, many kinds of products have acquired the GS certificated.

The company has advanced manufacture technology and sound manufacturing facilities. In recent years, its production capacity has been increased with company's Constant development . Not only can we guarantee the large orders on schedule but also Arrange special productions for OEM orders. Wish cooperation sincerely to create the future together!



COMPANY CERTIFICATION

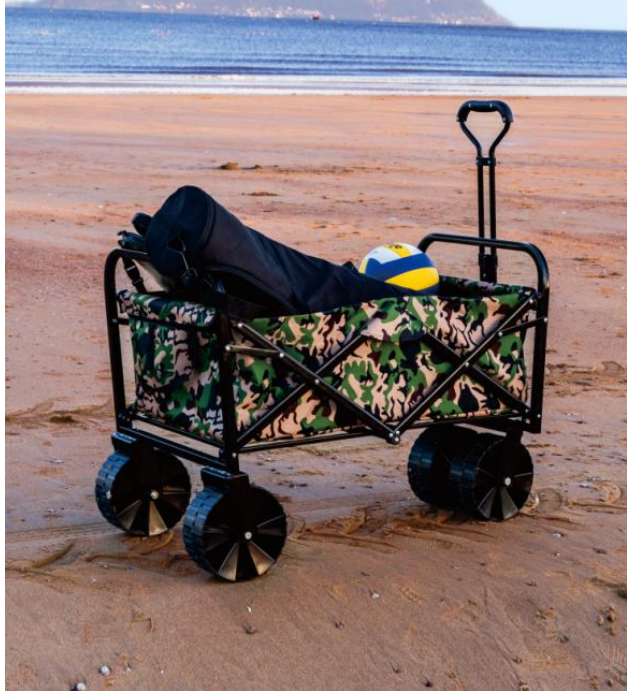


CONTENTS

Garden Cart

-  FOLDING WAGON 01
-  MESH GARDEN CART 19
-  ATV TRAILER 23
-  GARDEN DUMP CART 27
-  GARDEN ROLLING WORK SEAT CART 29
-  GARDEN WATER HOSE REEL CART 31
-  WHEELBARROW 34
-  PET CAGE 49
-  CHRISTMAS GIFT 52
-  POPULAR WHEELS 57

FOLDING WAGON



TC1011

PRODUCT SPECS	
MODEL	TC1011
MATERIALS	Steel frame, canvas fabric, plastic
OVERALL SIZE	L980xW530xH1130mm
GROSS WEIGHT	9.6KG
FEATURES	Load Capacity: 150 lbs Heavy-duty 8" wheels Sturdy Steel powder coated Frame Single layer utility polyester fabric Straight handle



Different color are available
Blue red pink olive are the best popular colors



TC1012

PRODUCT SPECS	
MODEL	TC1012
MATERIALS	Steel frame, canvas fabric, plastic
OVERALL SIZE	L900*W530*H1080mm
GROSS WEIGHT	10.8KG
FEATURES	Load Capacity: 150 lbs Heavy-duty 8" wheels Sturdy steel powder coated Frame Double layer 600D polyester fabric Expanded adjustable handle



FOLDING WAGON



OPENS IN 3 EASY STEPS



1. Remove wagon from travel sleeve and open hook and loop enclosure releasing the handles
2. Spread the wagon frame open and allow it to come to a fully extended position. Use caution near moving parts to prevent pinching
3. Enjoy!

TC1013

PRODUCT SPECS	
MODEL	TC1013
MATERIALS	Steel frame, canvas fabric, plastic
OVERALL SIZE	L1150xW525xH1120mm
GROSS WEIGHT	10.2KG
FEATURES	Load Capacity: 150 lbs Heavy-duty 8" wheels Single layer utility polyester fabric Straight handle Removable canopy offers shade and protection 1 huge component for extra storage



TC1014

PRODUCT SPECS	
MODEL	TC1014
MATERIALS	Steel frame, canvas fabric, plastic
OVERALL SIZE	L1110xW500xH975mm
GROSS WEIGHT	11.9KG
FEATURES	Load Capacity: 150 lbs "T" style ergonomic telescoping pull handle 6" swivel wheels for easy mobility Easily fits in the trunk of a car Makes transporting your gear effortless Folds down to compact size with protective travel sleeve



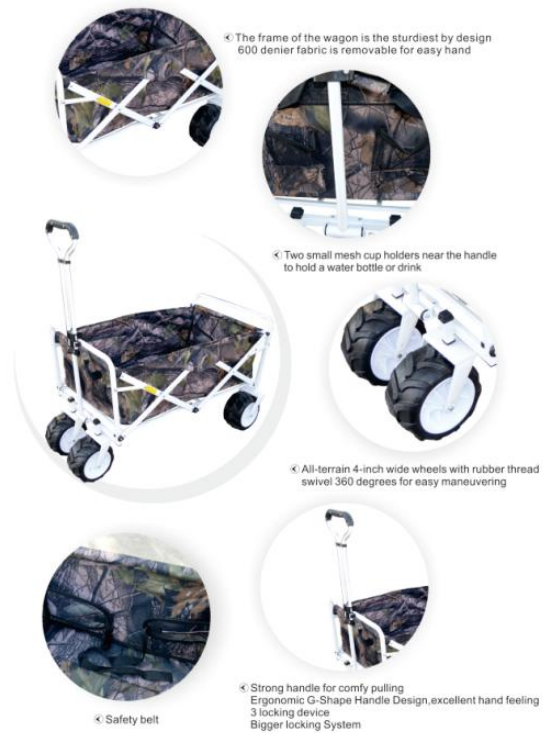
TC1015

PRODUCT SPECS	
MODEL	TC1015
MATERIALS	Steel frame, canvas fabric, plastic
OVERALL SIZE	L925xW510xH1015mm
GROSS WEIGHT	13.1KG
FEATURES	Load Capacity: 150 lbs Adjustable handle Extra large wheels Perfect for any occasion Durable 600D polyester fabric 2 mesh cup holders keep your beverage secure



TC1015A

PRODUCT SPECS	
MODEL	TC1015B
MATERIALS	Steel frame, canvas fabric, plastic
OVERALL SIZE	L920xW570xH1005mm
GROSS WEIGHT	10.88KG
FEATURES	Load Capacity: 150 lbs Two front pockets Strong Adjustable handle for comfy pulling 600 denier fabric is removable for easy hand All-terrain 4-inch wide wheels with rubber thread swivel 360 degrees for easy maneuvering



TC1016

PRODUCT SPECS	
MODEL	TC1015A
MATERIALS	Steel frame, canvas fabric, plastic
OVERALL SIZE	L1117xW501xH495mm
GROSS WEIGHT	12.9KG
FEATURES	Load Capacity: 150 lbs Two front pockets Six pockets along with flaps 600 denier fabric is removable for easy hand heavy duty straight handle All-terrain 4-inch wide wheels with rubber thread swivel 360 degrees for easy maneuvering



TC1017

Load Capacity: 150lbs
Overall Size: L900*W530*H1060mm
Expanded Handle
Durable 600D polyester fabric
Heavy duty 8" PVC brake wheels
With Safety belt



TC1018

Load Capacity: 150lbs
Overall Size: L1050*W525*H1145mm
Expanded Handle
Durable 600D polyester fabric
Heavy duty 8" PVC brake wheels
With Removable canopy safety belt



TC1019

Load Capacity: 100lbs
Overall Size: L820xW450xH918MM
Wheel: 6" heavy duty PVC wheels
"T" style ergonomic telescoping pull handle
With protective travel sleeve



ACCESSORIES



Brake Wheels



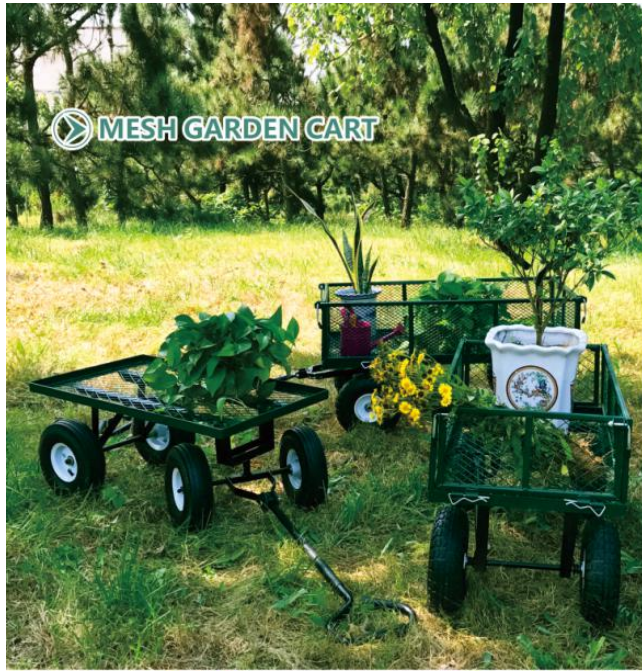
Safety Belt



Protective Travel Sleeve



Folding Stool



MESH GARDEN CART



MESH GARDEN CART

青岛朗威机械有限公司
Qingdao Longwin Industry Co., Ltd



MESH GARDEN CART TC4211



TC4211

TC4211H



Load capacity: 350kg
Wheel: 10"x3.50-4 Air
Body Size: L1125xW505xH1015mm



Load capacity: 350kg
Wheel: 10"x3.50-4 Air
Body Size: L1125xW505xH1015mm

Qingdao Longwin Industry Co., Ltd | 20

LONGWIN 青岛朗威机械有限公司
Qingdao Longwin Industry Co., Ltd

MESH GARDEN CART

MESH GARDEN CART TC4250



Different color are available
Economical and Practical
Durable 600D waterproof liner



21 | Qingdao Longwin Industry Co., Ltd

MESH GARDEN CART

青岛朗威机械有限公司
Qingdao Longwin Industry Co., Ltd



TC4205



load capacity: 500kg
Wheel: 13"x5.00-6 Air
Body Size: L1370xW690xH1140
heavy duty model



additional basket

TC4206



load capacity: 300kg
Wheel: 10"x3.50-4 Air
Body Size: L1900xW455xH835mm

TC4251



load capacity: 150kg
Wheel: 10"x3.50-4 Air
Body Size: L1040xW490xH800mm

TC4250



load capacity: 200kg
Wheel: 10"x3.50-4 Air
Body Size: L1055xW465xH900mm

TC4211N



load capacity: 300kg
Wheel: 10"x3.50-4 Air
Body Size: L1250xW550xH1040



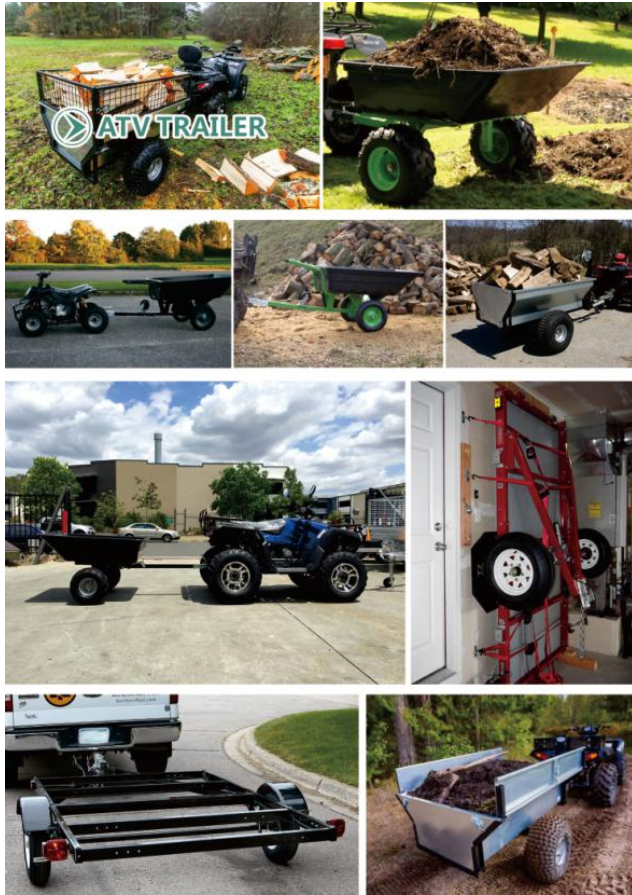
dumping model

TC4207



load capacity: 350kg
Wheel: 10"x3.50-4 Air
Body Size: L1100xW505xH930mm

Qingdao Longwin Industry Co., Ltd | 22



ATV TRAILER

青岛朗威机械有限公司
Qingdao Longwin Industry Co., Ltd



POLY TRAILER
BTC001PRO



- Easy dump, make the work free and relaxed
- 5 inch iron caster, easy to pull and push on the lawn
- Hitch couple and plug in, easy to fits ATV&UTV

ATV Trailer Small Trailer Wheelbarrow
Plastic tubing | retractable drawbar 360Grad 5 inch iron steering caster
Special Features:
- Retractable drawbar can be used as a wheelbarrow
- 360° drawbar steering caster
- 16 inch 4.80/4.00-8 Tire
- Metal base frame
- Loading area tiltable
- Plastic tubing
- Capacity 350kg

BTC001



Retractable drawbar
HD Poly tub Dimensions:
48 L x 36 W x 12" H (1210x 960x 310mm)
Wheels: 16inch 4.00-8 tyres

BTC003



HD Poly tub Dimensions:
48 L x 36 W x 12" H (1210x 960x 310mm)
Wheels: 16inch 8.00-7 off road tyres

BTC004



HD Poly tub Dimensions:
48 L x 36 W x 12" H (1210x 960x 310mm)
Wheels: 18inch 9.50-8 off road tyres

BTC005



HD Poly tub Dimensions:
48 L x 36 W x 12" H (1210x 960x 310 mm)
Wheels: 18inch 9.50-8 off road tyres

Qingdao Longwin Industry Co., Ltd | 24

LONGWIN 青岛朗威机械有限公司
Qingdao Longwin Industry Co., Ltd

ATV TRAILER

STEEL TRAILER

BTC002



Overall size: L1520xW875xH795 mm
Wheels: 16inch 4.00-8

BTC006



Overall size: 2700*1000*950 mm
Box size: 1500*1000*540 mm
Capacity: 550KG
Wheels: 22 x 11-8 off road tyres

25 | Qingdao Longwin Industry Co., Ltd

ATV TRAILER

青岛朗威机械有限公司
Qingdao Longwin Industry Co., Ltd



FT001



8 x 4 Foldable utility trailer
Chassis 2440mm x 1220mm
Overall Size: 3550mm x 1600mm
Wheels: 5.30-12 tire with white rim
Load capacity: 1720lbs

BTC007



Overall Dimension:
780 mm x 610 mm x 500 mm, total length with drawbar 1530mm
Tray Dimension: 800mm x 500mm x 310mm
Load Capacity: 80kg
Water Capacity: 90 Liters

Qingdao Longwin Industry Co., Ltd | 26



GARDEN DUMP CART

青岛朗威机械有限公司
Qingdao Longwin Industry Co., Ltd



GARDEN DUMP CART
TC4253

Load capacity: 300KG
Water capacity: 75L
Body Size: L/W/H(mm):
1050x520x920
Wheel: 10"x3.50-4 Air



TC4253S



Load capacity: 250KG
Water capacity: 50L
Body Size: L/W/H(mm):
1000x470x930
Wheel: 10"x3.00-4 Air

TC4253U



Load capacity: 250KG
Water capacity: 50L
Body Size: L/W/H(mm):
1000x470x930
Wheel: 10"x3.50-4 Air
No quick-release dump feature

TC4253H



Load capacity: 350KG
Water capacity: 125L
Body Size: L/W/H(mm):
1155x610x990
Wheel: 13"x500-6 Air

Qingdao Longwin Industry Co., Ltd | 28



GARDEN ROLLING WORK SEAT CART

青岛朗威机械有限公司
Qingdao Longwin Industry Co., Ltd



TC4501A

Load capacity: 80KG
Body Size: L/W/H(mm):
495x430x305
Wheel: 8" PVC wheel
Plastic Garden Trim Cart



TC4501B



Load capacity: 150KG
Body Size: L/W/H(mm):
465x205x500
Wheel: 10"x3.50-4 Air
360 degree swivel seat
adjustable height

TC4501C



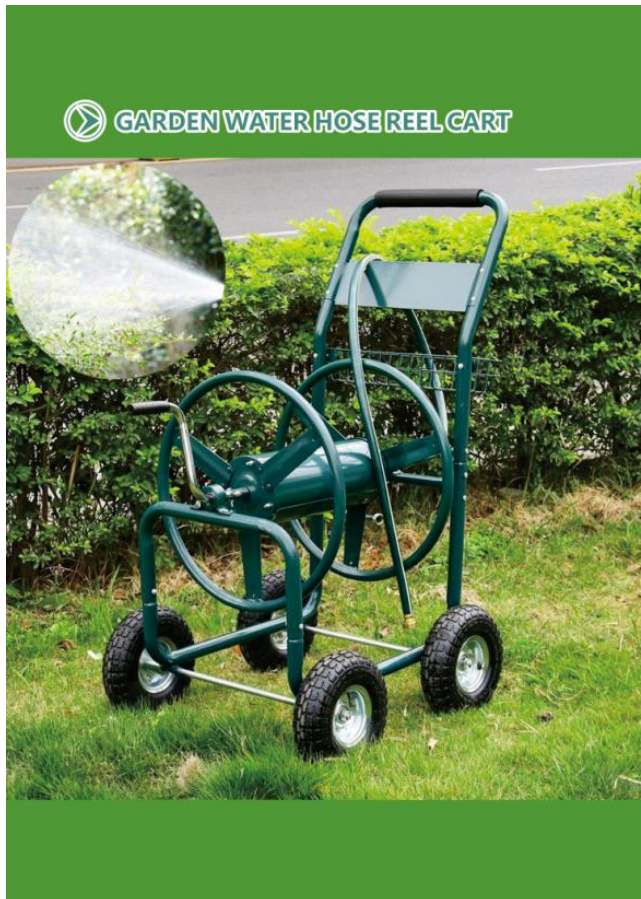
Load capacity: 150KG
Body Size: L/W/H(mm):
870x445x540
Wheel: 10"x3.50-4 Air
Steer the front wheels with
the easy to reach turnbar

TC4501D



Load capacity: 150KG
Body Size: L/W/H(mm):
860x445x975
Wheel: 10"x3.50-4 Air
A longer handle can be pulled
like a wagon

Qingdao Longwin Industry Co., Ltd | 30



GARDEN WATER HOSE REEL CART

GARDEN TOOLS

青島朗威機械有限公司
Qingdao Longwin Industry Co., Ltd



WATER HOSES REELS CART
Body size : L815xW625xH1100mm
Wheel : 10x3.50-4 Air

TC4703
Body Size:L750xW590xH910mm
Wheel:12"x2" Air

TC4706
Body Size: L77 xW51 x H93.5 cm
Wheel: 10"x3.50-4 Air



TC4710
Body Size: L99 xW54 x H109 cm
Wheel: 10"x4.10/3.50-4 Air



TC4719
Wheel:4.10/3.50-4 Air
Body Size:L770xW600xH920



青島朗威機械有限公司
Qingdao Longwin Industry Co., Ltd

GARDEN WATER HOSE REEL CART



POLY GARDEN CART
Body size : L1250xH655xW655mm
Wheel : 10x2.5 solid



FERTILIZER SPREADER
Load Capacity:25kg
Wheel:9"x2.3" Solid
Body Size:L1000xW485xH690mm



GARDEN KNEELER & SEAT
Load Capacity:150kg
Folds flat for storage:69x27x13.5 CM
Body Size:L590xW275xH475mm



KAYAK CART
Load Capacity : 100kg
wheel: 10" x 3.00-4 Air
Body Size:L750xW410xH430mm



LAWN AERATOR
Body Size:H91xW28cm
10pcs/carton
Carton Size:L920xW290xH300mm



LAWN ROLLER
Water Capacity: 60L
Body size: L123xW49xH42cm
Roller size: 420x490mm



TRASH CAN
Water Capacity:40L
Body Size:L850xW500xH550mm



MODEL:TC01
Capacity :50kg
Wheel: 6" solid
Body size: L680xW53xH97mm



WHEELBARROW

NEW MODEL
WB8614-6

Heavy Duty Style with
->Extra Edge Poly Tray
->Galvanized Handle
L/H/C/A/B/h(mm):1505x550x550x990x710x345
Net Weight: 24.50 KG
Wheel:16"x6.50-8 Air Tyre & Steel Rim
Handle Dimension:1500x600x350 mm
Load capacity:200kg
Water capacity:100L
Sand capacity:7CBF
Container Load:400pcs/20GP 800pcs/40GP



Square Tube Handle
Square Tube Axle Bracket
With Galvanize Finished

6 mm Thickness Plate Steel
One Piece Welded Tray
Brace

6 mm Thickness Plate Steel
Nose Guard Linked With
Tray Brace



6 mm Thickness Plate
Steel One Piece
Welded Leg

16"x6.50-8 Pneumatic
Wheel With Welded Rim
And Standard Bearings

Extra Edge Poly Tray
With UV protection

12 mm Thickness Shock
Board With Wedges
Supplied Beneath The Tray

Why We Are Different ?

- 1 Tray**
100 Litre Capacity
Seamless Powder Coated Finish
- 2 Upright Supports**
Strenn weight supports
Provides extra strength to tray
- 3 Nose Guard**
Heavy duty nose guard provide
protection and stability
- 4 Wheel & Tyre**
16"x7.50-8 Pneumatic 4 Ply Tyre
Good Rim with 25mm Axle
- 5 Legs**
12mm Powder Coated
Welded Steel Tubular Legs
- 6 Handles**
48 x 35 mm Powder Coated
Steel Handles
- 7 Shock Board & Wedge**
Poly Shock board and wedge
Helps absorb impact of objects

WB8612P

L/H/C/A/B/h(mm): 1520x465x540x980x680x320
Net Weight: 17.80 KG
Wheel:16"x6.50-8 Air Tyre & Poly Rim
Handle Dimension:1500x500x250 mm
Load capacity:200kg
Water capacity:100L
Sand capacity:7CBF
Container Load:350pcs/20GP 700pcs/40GP



WB8612S

L/H/C/A/B/h(mm): 1520x465x540x980x680x320
Net Weight: 20.70 KG
Wheel:16"x6.50-8 Air Tyre & Poly Rim
Handle Dimension:1500x500x250 mm
Load capacity:200kg
Water capacity:100L
Sand capacity:7CBF
Container Load:350pcs/20GP 700pcs/40GP

WB8613

L/H/C/A/B/h(mm): 1470x645x580x990x710x345
Net Weight: 23.90 KG
Wheel:16"x7.50-8 Air Tyre & steel Rim
Handle Dimension:1500x600x350 mm
Load capacity:250kg
Water capacity:100L
Sand capacity:7CBF
Container Load:350pcs/20GP 700pcs/40GP



WB8614

L/H/C/A/B/h(mm): 1500x620x535x990x710x345
Net Weight: 18.30 KG
Wheel:16"x6.50-8 Air Tyre & Poly Rim
Handle Dimension:1500x500x250 mm
Load capacity:250kg
Water capacity:100L
Sand capacity:7CBF
Container Load:350pcs/20GP 700pcs/40GP

WB8614-1

L/H/C/A/B/h(mm): 1500x630x560x990x710x345
Net Weight: 26.10 KG
Wheel:16"x7.50-8 Air Tyre & Steel Rim
Handle Dimension:1500x600x350 mm
Load capacity:250kg
Water capacity:100L
Sand capacity:7CBF
Container Load:350pcs/20GP 700pcs/40GP



WB8614-2

L/H/C/A/B/h(mm): 1520x645x540x980x680x320
Net Weight: 27.50 KG
Wheel:16"x7.50-8 Air Tyre & Steel Rim
Handle Dimension:1500x600x350 mm
Load capacity:250kg
Water capacity:100L Sand
capacity:7CBF
Container Load:350pcs/20GP 700pcs/40GP



WB8614-3

L/H/C/A/B/h(mm): 1520x635x540x990x710x345
Net Weight: 21.30 KG
Wheel:16"x6.50-8 Air Tyre & Poly Rim
Handle Dimension:1500x500x250 mm
Load capacity:200kg
Water capacity:100L
Sand capacity:7CBF
Container Load:350pcs/20GP 700pcs/40GP

WB8614-4

L/H/C/A/B/h(mm): 1500x600x570x980x680x320
Net Weight: 20.70 KG
Wheel:16"x6.50-8 Air Tyre & Poly Rim
Handle Dimension:1500x500x250 mm
Load capacity:200kg
Water capacity:100L
Sand capacity:7CBF
Container Load:400pcs/20GP 700pcs/40GP



WB8614-5

L/H/C/A/B/h(mm): 1520x460x550x980x680x320
Net Weight: 20.70 KG
Wheel:16"x6.50-8 Air Tyre & Poly Rim
Handle Dimension:1500x500x250 mm Galvanized
Load capacity:200kg
Water capacity:100L
Sand capacity:7CBF
Container Load:400pcs/20GP 700pcs/40GP

WB8614-6

L/H/C/A/B/h(mm): 1505x550x550x990x710x345
Net Weight: 24.50 KG
Wheel:16"x6.50-8 Air Tyre & Steel Rim
Handle Dimension:1500x600x3250 mm
Load capacity:200kg
Water capacity:100L
Sand capacity:7CBF
Container Load:400pcs/20GP 700pcs/40GP



Packing:



Handies Packing In Pallet



Trays Packing In Pallet



Legs Packing In Stack



Wheels & Spare Parts Packing In Carton

WB5006P

L/H/C/A/B/h(mm): 1490x600x615x910x560x270
Net Weight: 17.60 KG(With Plastic Tray)
Wheel: 16"x4.00-8 Air Wheel
The Wheel with Steel Rim&6204 Bearings
Load capacity:200kg
Water capacity:75L
Sand capacity:4.5CBF



WB5006R

L/H/C/A/B/h(mm): 1500x650x615x950x600x285
Net Weight: 19.80 KG(With Steel Tray)
Wheel: 16"x4.00-8 Air Wheel
The Wheel with Steel Rim&6204 Bearings
Load capacity:200kg
Water capacity:75L
Sand capacity:4.5CBF



WB4024

L/H/C/A/B/h(mm): 1305x620x585x815x610x215
Wheel: 13inch 3.50/4.00-6
Load capacity: 80kg
Water capacity: 62.5L
Sand capacity: 4CBF



WB4024P

L/H/C/A/B/h(mm): 1305x620x585x815x610x215
Wheel: 13inch 3.50/4.00-6
Load capacity: 80kg
Water capacity: 65L
Sand capacity: 4CBF

WB4022

L/H/C/A/B/h(mm): 1300x550x560x820x665x245
Wheel: 16inch 4.00-8
Load capacity: 80kg
Water capacity: 85L
Sand capacity: 4CBF



WB4028

L/H/C/A/B/h(mm): 1300x550x560x820x665x245
Wheel: 16inch 4.00-8
Load capacity: 80kg
Water capacity: 75L
Sand capacity: 4.5CBF

WB5009

L/H/C/A/B/h(mm): 1450x630x555x860x600x285
Wheel: 13inch 4.00-8
Load capacity: 80kg
Water capacity: 85L
Sand capacity: 4.5CBF



WB6414G

L/H/C/A/B/h(mm): 1510x500x600x945x610x315
Wheel: 16inch 4.00-8
Load capacity: 150kg
Water capacity: 85L
Sand capacity: 4.5CBF

WB6414S

L/H/C/A/B/h(mm): 1510x500x600x945x610x315
Wheel: 16inch 4.00-8
Load capacity: 150kg
Water capacity: 85L
Sand capacity: 4.5CBF





WB6414P

L/H/C/A/B/h(mm): 1510x500x600x945x610x315
Wheel: 16inch 4.00-8
Load capacity: 150kg
Water capacity: 85L
Sand capacity: 4.5CBF



WB6414M

L/H/C/A/B/h(mm): 1510x500x600x945x610x315
Wheel: 16inch 4.00-8
Load capacity: 150kg
Water capacity: 85L
Sand capacity: 4.5CBF



NORTH AMERICA WHEELBARROW



WB4017P



Load Capacity: 100kg
Water capacity: 60L
Sand Capacity: 4CBF
Wheel: 14"x3.00-8 Air
L/H/C/A/B/h(mm): 815x300x350x520x408x95

WB4511P



Load Capacity: 150kg
Water capacity: 66L
Sand Capacity: 4CBF
Wheel: 16"x4.00-8 Air
L/H/C/A/B/h(mm): 1295x735x320x890x660x215

WB5400A



Load Capacity: 160kg
Water capacity: 75L
Sand Capacity: 5CBF
Wheel: 16"x4.00-8 Air
L/H/C/A/B/h(mm): 1480x520x550x890x630x290

WB 5400



Load Capacity: 160kg
Water capacity: 75L
Sand Capacity: 5CBF
Wheel: 16"x4.00-8 Air
L/H/C/A/B/h(mm): 1500x480x510x890x630x290

WB6024



Load Capacity: 180kg
Water capacity: 100L
Sand Capacity: 6CBF
Wheel: 16"x4.00-8 Flat free
L/H/C/A/B/h(mm): 1505x500x565x980x650x310

WB6024P



Load Capacity: 200kg
Water capacity: 90L
Sand Capacity: 5.5CBF
Wheel: 16"x4.00-8 Air
L/H/C/A/B/h(mm): 1510x530x325x940x700x285

WB6024D



Load Capacity: 250kg
Water capacity: 100L
Sand Capacity: 6CBF
Wheel: 16"x4.00-8 Air
L/H/C/A/B/h(mm): 1600x510x600x980x650x310

WB6024E



Load Capacity: 200kg
Water capacity: 100L
Sand Capacity: 6CBF
Wheel: 16"x4.00-8 Flat free
L/H/C/A/B/h(mm): 1600x510x600x980x650x330

WB6002P



Load Capacity: 180kg
Water capacity: 85L
Sand Capacity: 5.5CBF
Wheel: 16"x4.00-8 Air
L/H/C/A/B/h(mm): 1520x530x305x925x650x245

WB6012



Load Capacity: 150kg
Water capacity: 100L
Sand Capacity: 6CBF
Wheel: 16"x4.00-8 Air
L/H/C/A/B/h(mm): 1490x615x590x980x650x370



PACKING



WB7808
Load Capacity: 250kg
Water capacity: 100L
Sand Capacity: 6CBF
Wheel: 16" x 4.00-8 Air
L/H/C/A/B/h(mm): 1505x500x590x980x650x320



WB9600W
Load Capacity: 250 kg
Water Capacity: 100L
Sand Capacity: 10CBF
Wheel: 16" x 4.00-8 PU
L/H/C/A/B/h: 1520x580x580x1100x890x520cm

WB1003P



Load Capacity: 250kg
Water capacity: 140L
Sand Capacity: 8CBF
Wheel: 16" x 4.00-8 pu
L/H/C/A/B/h(mm): 1585x520x620x1120x850 x 405

WB9006P



Load Capacity: 250kg
Water capacity: 200L
Sand Capacity: 10CBF
Wheel: 16" x 4.00-8 Air
L/H/C/A/B/h(mm): 1500x460x550x1100x960 x 600

WB9600



Load Capacity: 250kg
Water capacity: 200L
Sand Capacity: 10CBF
Wheel: 16" x 4.00-8 pu
L/H/C/A/B/h(mm): 1500x460x550x1100x960 x 600

OR MAIL ORDER



PET CAGE

BIRD CAGE BC2158

Overall dimension: 20"L x 20"W x 60"H



BC2159



Overall Dimension: 21"L x 21"W x 58"H

BC2160



Overall Dimension: 25"L x 25"W x 60"H

BC2161



Overall Dimension: 31"L x 19"W x 54"H

➤ DOG CAGE



➤ **DC4104**
Overall Dimensions:
48"(L) X 30"(W) X 32"(H)



➤ **DC4105**
Overall Dimensions:
42"(L) X 26"(W) X 28"(H)



➤ **DC4106**
Overall Dimensions:
44"(L) X 28.3"(W) X 37"(H)



➤ **DC4107**
Overall Dimensions:
L37"(L)x22.5"(W) x30.5"(H)



➤ **DC4108**
Overall Dimensions:
L43"(L)x31"(W) x38"(H)



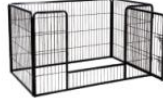
➤ **DC4109**
Overall Dimensions:
24"(L) X 17.3"(W) X 20.8"(H)



➤ **DC4110**
Overall Dimensions:
24"(W)x30"(H)



➤ **DC4111**
Overall Dimensions:
75"(L) X 72"(W) X 72"(H)



➤ **DC4112**
Overall Dimensions:
48"(L) X 31.5"(W) X 27.5"(H)



CHRISTMAS GIFT

➤ KIDS WHEELBARROW



➤ **WB0604P**
Load Capacity:10kg
Water Capacity:21L
Sand Capacity:1CBF
Wheel:8" x1.75" Solid
L/H/C/A/B/h(mm):850x320x310x580x410x215



➤ **WB0402**
Load Capacity:10kg
Water Capacity:13L
Sand Capacity:0.8CBF
Wheel:6" x1" Solid
L/H/C/A/B/h(mm):815x300x350x520x408x95



➤ **WB0402A**
Load Capacity:10kg
Water Capacity:13L
Sand Capacity:0.8CBF
Wheel:6" x1" Solid
L/H/C/A/B/h(mm):815x300x350x520x408x95



➤ **WB0605P**
Load Capacity:10kg
Water Capacity:21L
Sand Capacity:1CBF
Wheel:10" X3.00-4 Air
L/H/C/A/B/h(mm):855x250x320x520x405x215



➤ **WB0601P**
Load Capacity:10kg
Water Capacity:21L
Sand Capacity:1CBF
Wheel:8" x1.75" Solid
L/H/C/A/B/h(mm):852x320x292x590x432x218

➤ KIDS TRICYCLE
TC076

Load capacity:100kg
Box Size: L1670xW580xH730mm
Wheel:14x3.50-8/10x3.50-4



➤ KIDS WAGON



➤ **TC4201**
Load capacity: 150kg
Wheel: 10"x3.50-4 Air
Body Size: L1680xW500xH385mm



➤ **TC4201A**
Load capacity: 150kg
Wheel: 10"x3.50-4 Air
Body Size: L1680xW500xH530mm



➤ **TC4201B**
Load capacity: 150kg
Wheel: 10"x3.50-4 Air
Body Size: L1680xW630xH1005mm



➤ **TC4203**
Load capacity: 100kg
Wheel: 10"x3.00-4 Air
Body Size: L940xW615xH980mm

➤ KIDS EXCAVATOR
TC078

Body Size: L1080xW400xH63.50
Wheel: 6" plastic wheel



➤ WOOD BABY COT BED



Size: 1.2m x 0.8m

Size: 1.2m x 0.8m

Size: 1.3m x 0.7m



➤ **CW0801** 8"x2.50-4
➤ **PR1556** 15"x500-6
➤ **FR1601** 16"x4.00-8
➤ **PR1601** 16"x4.00-8



➤ **PR1602** 16"x4.00-8
➤ **PR1603** 16"x4.00-8
➤ **FR1602** 16"x8-7
➤ **PR1601** 16"x6.50-8



➤ **PR1604** 16"x7.50-8
➤ **PR18858** 18"x8.50 x8
➤ **FR1801** 18"x9.50-8
➤ **FR1802** 18"x9.50-8