

Stair and column accessory

Material:
Stainless steel
Steel
Aluminium
wood

Material of ordering: Titanium mirror Satin

035-036 **SANHE** hardware



FP-001



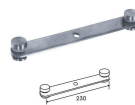
FP-002



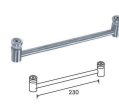
FP-003



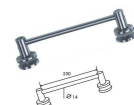
FP-004



FP-016



FP-017



FP-018



FP-007



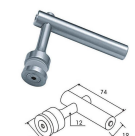
FP-007C



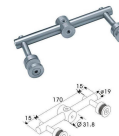
FP-008



FP-008C



FP-019



FP-020



FP-021



FP-012



FP-013



FP-014



FP-015



FP-022



FP-022A

Stair and column accessory

Material:
Stainless steel
Steel
Aluminium
wood

Material of ordering: Titanium mirror Satin

035-036 **SANHE** hardware



FP-001



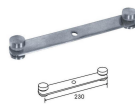
FP-002



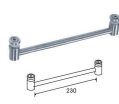
FP-003



FP-004



FP-016



FP-017



FP-018



FP-007



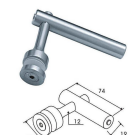
FP-007C



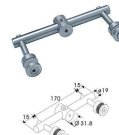
FP-008



FP-008C



FP-019



FP-020



FP-021



FP-012



FP-013



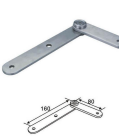
FP-014



FP-015



FP-022



FP-022A

Stair and column accessory

Material: **Stainless steel**
Steel
Aluminium
wood

Materies of ordering: Titanium mirror Satin

037-038

SANHE

FP-023 FP-077 FP-010 FP-009

FP-023A FP-087 FP-088 FP-089

FP-030 WALL FIXING FP-031 SEALED HEAD FP-037 CONNECTION FP-038 SEALED HEAD

FP-047A FP-047B FP-047

FP-039 WALL FIXING FP-044 CORNER CONNECTION FP-041 CORNER CONNECTION FP-040 CORNER CONNECTION

FP-055 FP-086 FP-048

FP-036 CONNECTION FP-075 FP-076 FP-079

FP-056 FP-057

Stair and column accessory

Material: **Stainless steel**
Steel
Aluminium
wood

Materies of ordering: Titanium mirror Satin

039-040

SANHE

FP-050 FP-075 FP-076 FP-079

FP-045 FP-070 FP-072

FP-083 FP-078 FP-080 FP-081

FP-074 FP-074S FP-091

FP-081A FP-082 FP-084 FP-085 FP-085M

FP-053 FP-052 FP-054 FP-073

Stair and column accessory

Material: **Stainless steel**
Steel
Aluminium
wood

Material of ordering: **Titanium** mirror Satin

041-042

SANHE
sanhehardware

FP-096 **FP-097** **FP-099** **FP-131** **FP-132** **FP-133**

FP-098 **FP-114** **FP-117** **FP-134** **FP-135** **FP-136**

FP-122 **FP-121** **FP-126**

FP-127 **FP-129** **FP-130**

Stair and column accessory

Material: **Stainless steel**
Steel
Aluminium
wood

Material of ordering: **Titanium** mirror Satin

043-044

SANHE
sanhehardware

JQ-9001 **JQ-9002** **JQ-9009** **JQ-9010**

JQ-9003 **JQ-9004** **JQ-9011** **JQ-9012**

JQ-9005 **JQ-9006** **JQ-9013** **JQ-9014**

JQ-9007 **JQ-9008** **JQ-9015**

Handrail and security railing

Material:
Stainless steel
Steel
Aluminium
wood

Material of ordering: Titanium mirror Satin

045-046 SANHE hardware

Security railing(pipe max. length 6meter,solid bar max.length 4meter)

Stainless steel pipe(max. length 6meter)



Handrail and security railing

Material:
Stainless steel
Steel
Aluminium
wood

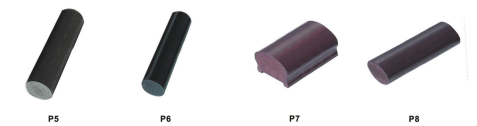
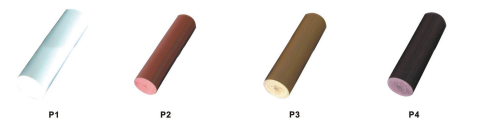
Material of ordering: Titanium mirror Satin

047-048 SANHE hardware

Solid wood railing(max. length 4meter)



PVC Railing(max. length 4meter)



三和扶手配件规格handrail size

名称Name	身型管规格(pipe size)MM/mm	名称Name	身型管规格(pipe size)MM/mm
	∅ 47.30 × 60		身型管规格(pipe size)MM/mm
	∅ 51.30 × 70		身型管规格(pipe size)MM/mm
	∅ 51.20 × 70		身型管规格(pipe size)MM/mm
	∅ 51.43 × 58		身型管规格(pipe size)MM/mm
	∅ 51.34 × 64		身型管规格(pipe size)MM/mm
	∅ 60.43 × 74		身型管规格(pipe size)MM/mm
	∅ 60.38 × 76		身型管规格(pipe size)MM/mm
	∅ 62.45 × 75		身型管规格(pipe size)MM/mm
	∅ 63.48 × 76		身型管规格(pipe size)MM/mm
	∅ 63.40 × 80		身型管规格(pipe size)MM/mm
	∅ 76.55 × 93		身型管规格(pipe size)MM/mm
	∅ 76.60 × 90		身型管规格(pipe size)MM/mm
	∅ 76.46 × 100		身型管规格(pipe size)MM/mm
	∅ 80.50 × 107		身型管规格(pipe size)MM/mm
∅ 89.70 × 105	身型管规格(pipe size)MM/mm		
∅ 89.58 × 115	身型管规格(pipe size)MM/mm		
∅ 89.50 × 120	身型管规格(pipe size)MM/mm		
∅ 102.60 × 120	身型管规格(pipe size)MM/mm		
∅ 102.63 × 133	身型管规格(pipe size)MM/mm		
∅ 102.50 × 150	身型管规格(pipe size)MM/mm		

IMPORTANT:
1.These measurements are subject to change or cancel. No responsibility is assumed for use of superseded or voided pages.
2.Please consult the manufacturer for confirmation of detailed dimensions for building construction purposes.
3.Due to printing process, the colors of actual products may differ from those pictures in catalogue. For true color please match the samples.
1.请参尺寸与实物可能略有差异,本公司有修改或取消上述产品,恕不另行通知,若使用过期或作废的图则,本公司将不负责任。
2.有关工段项目请提供尺寸数据请与厂家联系确认。
3.由于印刷关系,正式产品颜色与所示图面会有部分差异,一切以产品实物颜色为准。

Specification and products may be modified without further notice.
sanhe hardware factory will not be responsible for printing or photography errors,
the specifications in the diagram of the advertisement are only for part of the products,
if you need detailed information about our products,
please contact with sanhe hardware factory.



049-050 **SANHE**
sanhedoor.com

BATHROOM ACCESSORY

- SH-169**
Shower head
Size: 20x12x100mm
20x12x100mm
20x12x100mm
20x12x100mm
- SH-170A**
Shower head
Size: 20x12x100mm
20x12x100mm
20x12x100mm
20x12x100mm
- SH-171**
Shower head
Size: 20x12x100mm
20x12x100mm
20x12x100mm
20x12x100mm
- SH-171A**
Shower head
Size: 20x12x100mm
- SN10-06A**
Towel ring
Material: 304 Stainless steel
Finishing: Satin
Size: 130x50x55
- SN10-01**
Towel paper holder
Material: 304 Stainless steel
Finishing: Satin
Size: 130x50x55
- SN10-01A**
Towel paper holder
Material: 304 Stainless steel
Finishing: Satin
Size: 130x50x55
- SN10-02**
Towel paper holder
Material: 304 Stainless steel
Finishing: Satin
Size: 110x110x110
- SN10-05**
Towel paper holder
Material: 304 Stainless steel
Finishing: Satin
Size: 120x120x110
- SN10-06A**
Shower glass holder
Material: 304 Stainless steel
Finishing: Satin
Size: 120x120x55
- SN10-09**
Shower glass holder
Material: 304 Stainless steel
Finishing: Satin
Size: 60x100x100
- SN02-12**
Shower glass holder
Material: 304 Stainless steel
Finishing: Satin
Size: 300x120x70
- SN002-04**
Double towel rack
Material: 304 Stainless steel
Finishing: Satin
Size: 600x180x100
- SN004-44A**
Double towel rack
Material: 304 Stainless steel
Finishing: Satin
Size: 630x220x100
- SN004-44**
Double towel rack
Material: 304 Stainless steel
Finishing: Satin
Size: 650x210x100
- SN10-03A**
Double towel rack
Material: 304 Stainless steel
Finishing: Satin
Size: 415x260x100
- SN005-03**
Double towel holder
Material: 304 Stainless steel
Finishing: Satin
Size: 600x120x100
- SN10-07**
Double towel holder
Material: 304 Stainless steel
Finishing: Satin
Size: 600x120x55
- SN0701**
Shower glass holder
Material: 304 Stainless steel
Finishing: Satin
Size: 600x120x60
- SN010**
Bathroom basket
Material: 304 Stainless steel
Finishing: Satin
Size: 275x220x45
- SN001**
Bathroom basket
Material: 304 Stainless steel
Finishing: Satin
Size: 300x220x45

Banister Series Material: Stainless steel, Silver, Aluminum, wood

Material of ordering: Titanium, mirror, Satin

051-052 **SANHE**
sanhedoor.com



MODEL Y8012
With non-standard customization
Material: 304 Stainless steel
Thickness of glass: 8/10mm

MODEL Y8012
With non-standard customization
Profile color: glossy silver, sand silver, flat silver, drawing
Thickness of glass: 8/10mm



MODEL Y8013
Size: 1200/800/1900mm, 1200/900/1900mm
Material: 304 Stainless steel
Thickness of glass: 8/10mm

MODEL Y2803
Size: 900/800/1800mm, 1000/1000/1800mm
Material: 304 Stainless steel
Thickness of glass: 8/10mm



MODEL Y804
Size: 900/800/1800mm, 1000/1000/1800mm
Profile color: glossy silver, sand silver, flat silver, drawing
Thickness of glass: 8/10mm

MODEL Y8012
With non-standard customization
Profile color: glossy silver, sand silver, flat silver, drawing
Thickness of glass: 8/10mm



MODEL Y2803
Size: 800/1200/1900mm, 800x1200x1900mm
Material: 304 Stainless steel
Thickness of glass: 8/10mm

MODEL Y8011
With non-standard customization
Profile color: glossy silver, sand silver, flat silver, drawing
Thickness of glass: 8/10mm

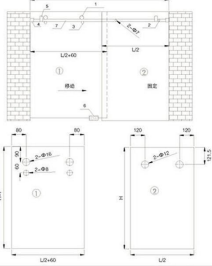
Shower Sliding door system 9100A series
浴室滑门系统9100A系列

可提供材料: 钛金 ■ 银光 ■ 拉丝 ■
Materials of ordering: TITANIUM MIRROR SATIN

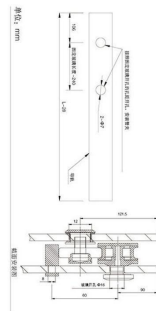
053-054 **SANHE**



标准配置: 钛金 ■ 银光 ■ 拉丝 ■
1. 偏心轮 2. 弯头 3. 防撞胶条
4. 密封胶条 5. 密封胶条
6. 密封胶条 7. 密封胶条



1. 偏心轮
2. 弯头
3. 防撞胶条
4. 密封胶条
5. 密封胶条
6. 密封胶条
7. 密封胶条



标准配置: SH-0001
Standard Application: SH-0001



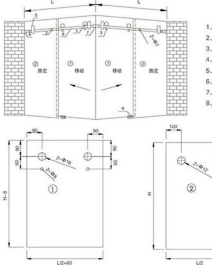
Shower Sliding door system 9100A series
浴室滑门系统9100A系列

可提供材料: 钛金 ■ 银光 ■ 拉丝 ■
Materials of ordering: TITANIUM MIRROR SATIN

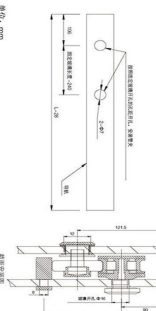
055-056 **SANHE**



标准配置: 钛金 ■ 银光 ■ 拉丝 ■
1. 偏心轮 2. 弯头 3. 防撞胶条
4. 密封胶条 5. 密封胶条
6. 密封胶条 7. 密封胶条



1. 偏心轮
2. 弯头
3. 防撞胶条
4. 密封胶条
5. 密封胶条
6. 密封胶条
7. 密封胶条



标准配置: SH-0005
Standard Application: SH-0005



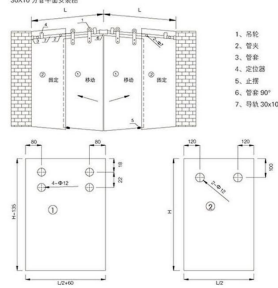
Shower Sliding door system 9100A series
浴室滑门系统9100A系列

可定制材料: 钛金 镜光 拉丝
Materials of ordering: TITANIUM MIRROR SATIN

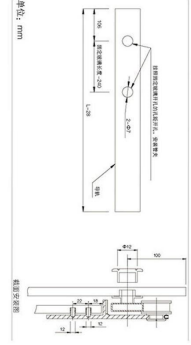
057-058 SANHE



产品特点说明
1. 采用意大利 TIGI 玻璃门系统。
2. 钢化玻璃, 安全防碎玻璃, 厚度 12mm。
3. 钛金/镜光/拉丝(钛金厚度 1.2mm, 镜光/拉丝 0.3mm)镀膜。
4. 意大利进口五金配件, 安全耐用。
Horizontal shower door installation diagram
1 The glass rail isn't sliding holes, the holes should be drilled according to the installation.
2 After installing the glass, please be careful to tighten the glass after making the holes.
3 After installing the glass, please be careful to tighten the glass after making the holes.
4 After drilling the holes, please be careful to tighten the glass after making the holes.
30X10 不锈钢安装系统



1. 滑轮
2. 管头
3. 管夹
4. 固定块
5. 止水
6. 管套 90°
7. 导轨 30X10



标准配置: SH-0008
Standard Application: SH-0008



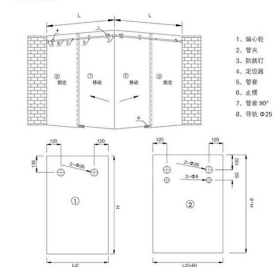
Shower Sliding door system 9100A series
浴室滑门系统9100A系列

可定制材料: 钛金 镜光 拉丝
Materials of ordering: TITANIUM MIRROR SATIN

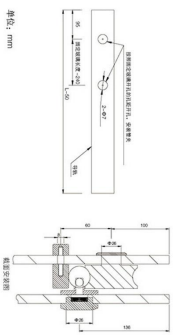
059-060 SANHE



产品特点说明
1. 采用意大利 TIGI 玻璃门系统。
2. 钢化玻璃, 安全防碎玻璃, 厚度 12mm。
3. 钛金/镜光/拉丝(钛金厚度 1.2mm, 镜光/拉丝 0.3mm)镀膜。
4. 意大利进口五金配件, 安全耐用。
Horizontal shower door installation diagram
1 The glass rail isn't sliding holes, the holes should be drilled according to the installation.
2 After installing the glass, please be careful to tighten the glass after making the holes.
3 After installing the glass, please be careful to tighten the glass after making the holes.
4 After drilling the holes, please be careful to tighten the glass after making the holes.
25 号管号安装系统



1. 滑轮
2. 管头
3. 限位钉
4. 固定块
5. 管夹
6. 止水
7. 管套 90°
8. 导轨 25



标准配置: SH-0011
Standard Application: SH-0011



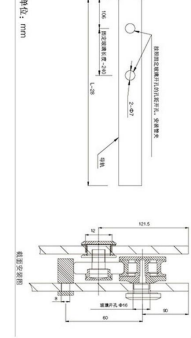
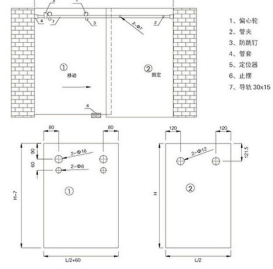
Shower Sliding door system 9100A series
浴室滑门系统9100A系列

可提供订做材质: 钛金 钛 钛光面 钛拉
Materials of ordering: TITANIUM MIRROR BATH

061-062 SANHE



本系统安装图
1. 需先安装好 60x60 玻璃固定胶圈
2. 需先安装好 20x20 玻璃固定胶圈
3. 需先安装好 20x20 玻璃固定胶圈
4. 需先安装好 20x20 玻璃固定胶圈
5. 需先安装好 20x20 玻璃固定胶圈
6. 需先安装好 20x20 玻璃固定胶圈
7. 需先安装好 20x20 玻璃固定胶圈



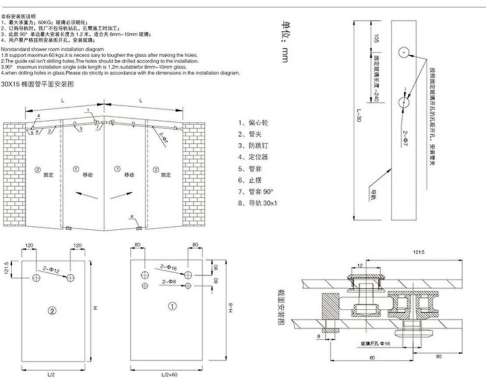
标准配置: SH-0013
Standard Application: SH-0013



Shower Sliding door system 9100A series
浴室滑门系统9100A系列

可提供订做材质: 钛金 钛 钛光面 钛拉
Materials of ordering: TITANIUM MIRROR BATH

063-064 SANHE



标准配置: SH-0014
Standard Application: SH-0014

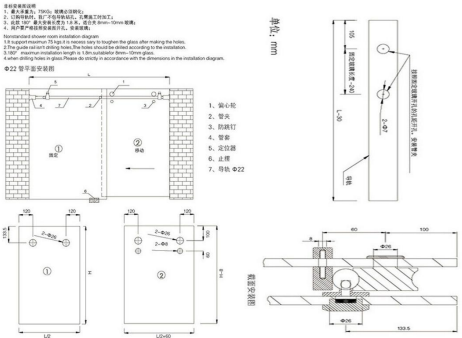


Shower Sliding door system 9100A series
浴室滑门系统9100A系列

可提供订做材料: 钛金 镜 钛金 拉丝
Materials of ordering: TITANIUM MIRROR SATIN

065-066 SANHE

标准配置: SH-0016
Standard Application: SH-0016

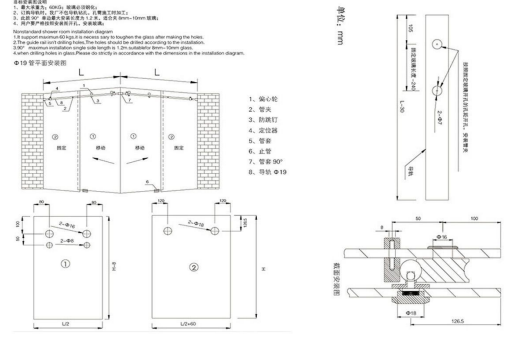


Shower Sliding door system 9100A series
浴室滑门系统9100A系列

可提供订做材料: 钛金 镜 钛金 拉丝
Materials of ordering: TITANIUM MIRROR SATIN

067-068 SANHE

标准配置: SH-0028
Standard Application: SH-0028



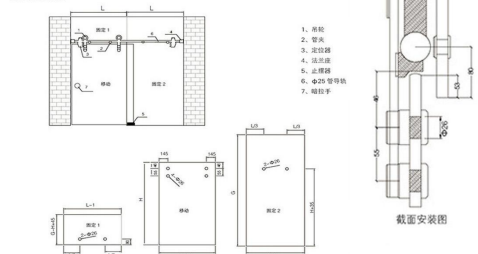
Shower sliding door system 9100A series
 浴室滑门系统9100A系列

可跟換訂貨材料: 钛金 ■ 钛光 ■ 拉丝 ■
 Materials of ordering: TITANIUM MIRROR SATIN

069-070 **SANHE**



安裝注意事項
 1. 牆面厚度為 100mm, 牆體必須垂直。
 2. 牆面材料: 瓷磚、天然石材、人造石、玻璃、10mm-15mm 薄板。
 3. 牆面 COF 值必須在 0.25 以上, 否則請用 100mm-150mm 薄板。
 4. 若用天然石材或瓷磚, 則不可用美紋紙填縫劑填縫。
 5. 牆面材料必須經專業設計師設計。
 6. 若發現牆面 COF 值不足, 則應在安裝前對牆面進行處理。
 7. 牆面材料必須經專業設計師設計。
 8. 牆面材料必須經專業設計師設計。
 9. 牆面材料必須經專業設計師設計。
 10. 牆面材料必須經專業設計師設計。



標準配置: SH-9100A(1)
 Standard Application: SH-9100A(1)

