

CATALOG 2019-II1

www.sunwayi.com



<http://www.sunwayi.com>
<http://carelec.en.alibaba.com>

<http://www.heyecai.com>
<http://sunwayi.en.alibaba.com>

Shenzhen Sunway Industry Co., LTD

amfori BSCI

Trade with purpose

ISO/TS16949 Audited Manufacturer

PI 50 360° MONITOR CAMERA



Shrink video to 1 FPS for parking monitoring



- All-dimensional Monitoring in "Parking" status (Parking-Monitoring starts 1 Minute late when car powers off, Recording 10' seconds each time, and 30 times at most)

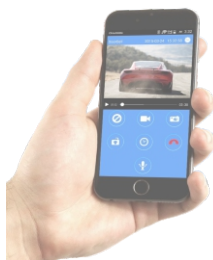
- 4 Optional Display Modes for 4 Different Occasion: (180° / 360° / Front & Back / 4 Channel)
- Storage Memory: up to 128G, 300mAh Battery; Support: G-sensor, One-Key-Lock;

MODEL	SPECIFICATION / HIGHLIGHTS	CONFIGURATION	SPECIAL POINTS SHOW
IP50-RVG	<ul style="list-style-type: none"> • GPS Tracking Playback Function • 360° Panorama Record, Outstanding Parking Monitoring • PS5270+A33, WDR, HD1080P, SuperVideo Clarity in Dark • Dual Record; Rearview Reversing • Power by Car Battery with Voltage pumpdown Protect Cable, No Battery, No Explosion! 		
IP50-RG	<ul style="list-style-type: none"> • GPS Tracking Playback Function • 360° Panorama Record, Outstanding Parking Monitoring • PS5270+A33, WDR, HD1080P, SuperVideo Clarity in Dark • Dual Record; Rearview Reversing • Power by Rechargeable Lithium Battery 		
IP50-R	<ul style="list-style-type: none"> • 360° Panorama Record, Outstanding Parking Monitoring • Power by Rechargeable Lithium Battery • Dual Record; Rearview Reversing 		

84T68 4G Android DVR



Mobile Phone Remote Control



GPS Positioning GPS Tracking
 RMOH(Remote Monitoring) RVC(real-time video)
 More People Share by Car-assist
 Multi-language App Customize device language



MODEL	SPECIFICATION / HIGHLIGHTS	SPECIAL POINTS SHOW
84T68A-4G	<ul style="list-style-type: none"> Controller: Mt6735, Android 5.1; 4G for 5 Frequency Bands Dash Cam with dual Record, Front1080*1920, Back 720*1280 Support: GPS Navigation, FM, BT, Wifi, Rearview Reversing 	<p>6.86 inch HD TFT LCD touch screen(480*1280 Pixel)</p> <p>Shooting angle:120°</p>
84T68A-3G	<ul style="list-style-type: none"> Controller: Mt8382, Android: 5.0; 3G for 2 Frequency Bands Dash Cam with dual Record, Front1080*1920, Back 720*1280 Support: GPS Navigation, FM, BT, Wifi, Rearview Reversing 	<p>Exclusive Base pedestal stand for Truck and trailer Special long cable of rear camera for choice: 15M or 28M</p>
84T68B-4G	<ul style="list-style-type: none"> Controller: Mt6735, Android 5.1; 4G for 5 Frequency Bands Dash Cam with dual Record, Front1080*1920, Back 720*1280 Support: GPS Navigation, FM, BT, Wifi, Rearview Reversing 	<p>6.86 inch HD TFT LCD touch screen(480*1280 Pixel)</p> <p>Shooting angle:120°</p>
84T68B-3G	<ul style="list-style-type: none"> Controller: Mt8382, Android: 5.0; 3G for 2 Frequency Bands Dash Cam with dual Record, Front1080*1920, Back 720*1280 Support: GPS Navigation, FM, BT, Wifi, Rearview Reversing 	<p>Exclusive Base pedestal stand for Truck and trailer Special long cable of rear camera for choice: 15M or 28M</p>

4M58 FHD 4" DASH CAM

Lens: 6pcs Optical Glasses, 25mm Diameter
 Patent Shell, high temperature resistance
 Power: Lithium Battery



MODEL	SPECIFICATION / HIGHLIGHTS	CONFIGURATION	SPECIAL POINTS SHOW
4M58	<ul style="list-style-type: none"> FHD 1080P (NTK + Sony323) Lens: 6pcs Optical Glasses, 25mm Diameter Power: Lithium Battery Patent Shell, high temperature resistance 		
4M58R	<p>Dual Record</p> <ul style="list-style-type: none"> FHD 1080P + 720P(rearview cam) Mstar + Sony 323 		
4M58V	<p>DVR + Parking Sensor</p> <ul style="list-style-type: none"> Rearview Parking while Reversing Ultrasonic sensor detect distance: 0.3-1.8M NTK96658 + Sony323, WDR/HDR 		
4M58TP	<p>DVR + TPMS</p> <ul style="list-style-type: none"> Tire Pressure Monitor System (TPMS) FHD 1080P + 720P(rearview cam) Mstar + Sony 323 		

CPN-A FHD 3" DASH CAM



- Private Patent Zinc alloy shell for outstanding heat dissipation
- Full HD 1080P@30FPS, HDR, (NTK96650+Sony323)
- High Quality Image Sensor and Fill-in light for outstanding night video clarity
- Voltage: 12-24V (1.5A) Car adapter with charging cable, Size: 89*51*33mm
- Big Camera Lens(Diameter 1") for HD Video,
- Ultra-wide-Angle Camera lens provides multi-lane coverage
- Gravity sensing, Motion detection, Parking monitor, License plate watermark, Quadraple 20mm(4X) for photograph



Bracket (1)



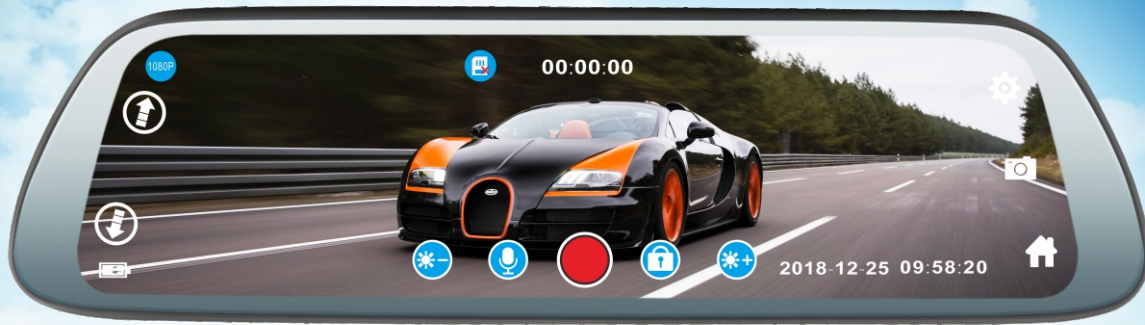
Bracket (2)



FHD3" DASH CAM MS3

SPECIFICATION / HIGHLIGHTS	MODEL
<ul style="list-style-type: none"> • Video Resolution: HD 1296P (2K) • Mstar + Sony323 • Lens: 6pcs Optical Glasses, 25mm Diameter • Power: Lithium Battery 	MS3
<ul style="list-style-type: none"> • Wifi Function • Video Resolution: FHD 1080P @ 30FPS • 6G / 25mm Lens, Lithium Battery 	MS3W
<ul style="list-style-type: none"> • GPS Tracking Playback Function • Wifi Function • Video Resolution: FHD 1080P @ 30FPS • 6G / 25mm Lens, Lithium Battery 	MS3WG

Streaming Media Rear Mirror



• Special Function

- Screen: 9.66 inch HD TFT (1280X320) with full Touch Function & Full display
- Resolution: 1080P(Back) + 1080P(Front)
- Rear View Aid: Visual Reversing
- Shrink Monitor for Parking & Parking Guard
- G-sensor for Gravity
- Language: English, Chines
- Rear Camera provides 1080P FHD image of the car back to improve driving safety.

• Universal Bind or Special Bracket for Installation



J966-R8



1080P

Rear Camera provides 1080P FHD image of the car back to improve driving safety.

J966-U41B



Easy-installation US License Plate Camera Give Real time Image of Car Back!

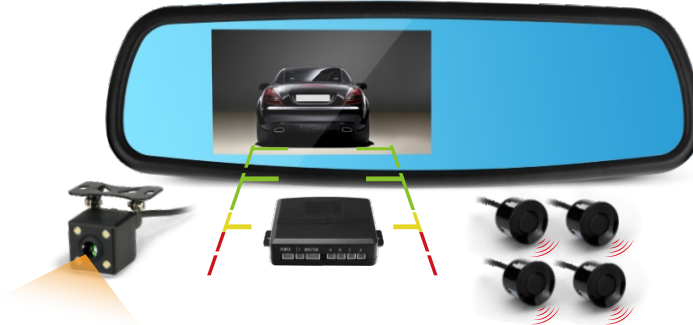
SS01-R



- Interpolation 1080P@24FPS (Front Camera)
- Rearview Function Starting when Reversing
Voltage: 12-24V, Temperature: -20°~+70°C
- Shooting angle 140°, 4.3" Screen
- Dual Record for Front & Rear
Rearview Reversing Function



SS01-V



- Working as Video Parking Sensor when reversing
- Colorfully display the directions and distance of barrier, and warn with buzz beeper
- Dual Record for Front & Rear Image, 1080P / 24fps (Front)
- Detect Distance of 4 Ultrasonic Sensors: 2.2~0.3 Meters



06M-R



- Interpolation 1080P@24FPS (Front Camera)
- Rearview Function Starting when Reversing
- Voltage: 12-24V, Temperature: -20°~+70°C
- Shooting angle 140°, 4.3" Screen
- Dual Record for Front & Rear
- Rearview Reversing Function

06M-V



- Working as Video Parking Sensor when reversing
- Colorfully display the directions and distance of barrier, and warn with buzz beeper
- Dual Record for Front & Rear Image, 1080P / 24fps (Front)
- Detect Distance of 4 Ultrasonic Sensors: 2.2~0.3 Meters



Y34-4K



- Video Resolution(Front): **4K** AR0210+6G
Rear view Camera **FHD 1080P** S323+6G HDMI
- Shrink video to 1 FPS while parking monitoring status



CG-33



- Fill in Lights for Night Video Clarity
- TFT screen 2.4"
- 12-24V Car Adapter with Charging Cable
- Suction Cup Mount Swivels for Optimal Position
- Hands-free Auto ON/OFF



GE1247



- 1080P or 720P for High Definition Video Recording
- 120° Camera Lens Provides Multi-lane Coverage
- IR lights for Outstanding Night Video Clarity
- TFT screen 2.4" for Display. Video Format: AVI
- 12-24V (800mA) Car Adapter with Charging Cable
- Suction Cup Mount Swivels for Optimal Position
- Hands-free Auto ON/OFF
- Size: 75*53*26mm. Rubber Black Color



34MS



34MS-FHD 34MM-FHD

FHD 1080P @ 30 FPS
Mstar8328P+Sony323



34MS-HD-SL 34MM-HD-SL

HD 1080P @ 24 FPS
GP6248+SC2363+IP3
Starlight Nightvision



34MS-HD 34MM-HD

HD 1080P @ 24 FPS
GP6248+H62+IPS3.0



34MM



MINI2



- FHD 1080P @ 30 FPS, NTK96658+Sony323
- Wifi Connection to APP
- Lens can adjust up/down for Optimal Position
- TFT screen 2.0" for Display
- 12-24V Car Adapter with Charging Cable



XTY3



DASH CAM W/ 3 EYES & IPS 4.0" TFT

- 1080P / 720P(Two recording modes) for Front Camera Video Recording
- Besides Main Camera for Front, OtherTwo Cameras for Inside & Backup
- 120° Lens Provides Multi-lane Coverage
- Rear View Function while Reversing; TFT screen 4.0"IPS
- 12-24V Car Adapter with Charging Cable



A18 No Screen / Dual Recorder / Hiding

WiFi Dash Cam

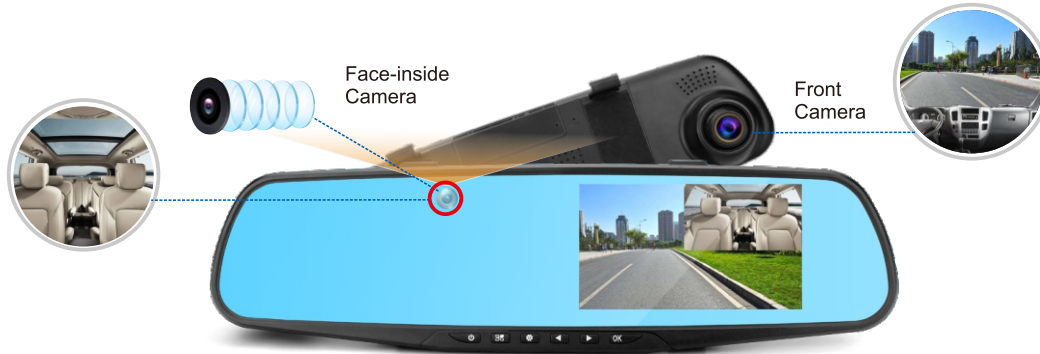
- WIFI Connection
- FHD 1080P
- Dual Record
- 170° View Angle
- Hiding Installation
- Good Night Vision
- Shrink Video



Five colors for Choice



06M-FI In-Car Monitor Mirror Camera



Working as In-car Monitor, suitable for Taxi, Public Bus

PI30



3.0" 360° Parking Monitor

PI45



4.5" 360° Parking Monitor

WD55Y

Dual Record Dash Cam W/ WiFi, 2.4" TFT

- FHD1080P for Front HD Video Recording
- With Backup Camera for Dual Recording
- With Wifi Transfer to APP
- No battery, no exposure, Power by special cable



HS322

FHD 1080P Dual Record Dash Cam W/ WiFi

- WIFI Transfer with APP function, Dual storage by TF and APP.
- NT96658 Resolution+Sony322 Chipset.
- No Battery and No exposure, Power by special cable.
- FHD 1080P, 170° ultra wide angle with full glasses.
- Two models for choice: Dual Record(Front & Back) .
Single Record(Only Front).



666-A



H9



EB223



CG-11



605W



606B



TPCMU TPMS

- Displayer can Move for optimal view angle
- USB Charging Port for Mobile Phone
- Tires' Pressure data Show on the Same LCD
- Real-time monitoring pressure & temperature
- Warning while low / high air pressure
- Warning while high temperature
- Set up sensor: learn new sensor ID code when replace sensor
- Monitoring Range: 14~94Psi (1~6.5 Bar)
- Suitable for four-wheel car models (even some business Vehicle)



**Moving
LCD Display**

**USB
Charging Port**

ROTATING & USB CHARGING TPMS

TPCMU-EF



Working pressure: 0~99 Psi
 Battery life: 24 months
 Transmit Frequency: 433.92 MHz
 Working Voltage: 2.1~3.6 V
 Transmit power: <10dBm
 IP: IP67
 Working temperature: -30~80°C
 Storage temperature: -35~85°C
 Pressure accuracy: ±1.5Psi
 Temperature accuracy: ±2°C
 Dimension: 21mm(diameter)*17mm(high)
 Weight: 8.0g

TPCMU-IF



Working pressure: 0~99 Psi
 Battery life: >4years
 Transmit Frequency: 433.92 MHz
 Working Voltage: 2.1~3.6 V
 Transmit power: <10dBm
 IP: IP67
 Working temperature: -40~120°C
 Storage temperature: -45~125°C
 Pressure accuracy: ±1.5Psi
 Temperature accuracy: ±2°C
 Dimension: 70mm*53mm*20mm
 Weight: 30g

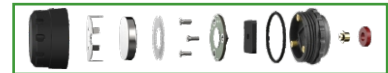
SOLAR POWER TPMS

SP1

- Power on by Solar Power Energy
- Colorful LCD displayer Showing directly
- Real-time monitoring the pressure & temperature
- Warning while low and high air pressure / high temperature
- Set up sensor: learn new sensor ID code when replace sensor
- Monitoring Range: 14~94Psi (1~6.5 Bar)
- Suitable for four wheel car models(even some business vehicle)
- Two Charging ways for main device: Solar Power / USB Charging



Tire Pressure Monitor System



SP1-E



SOLAR POWER TPMS W/ EXTERNAL SENORS & LCD DISPLAY

- Working pressure: 0~99 Psi
- Battery life: 24 months
- Transmit Frequency: 433.92 MHz
- Working Voltage: 2.1~3.6 V
- Transmit power: <10dBm
- IP: IP67 Weight: 8.0g
- Working temperature: -30~80°C
- Storage temperature: -35~85°C
- Pressure accuracy: ± 1.5 Psi
- Temperature accuracy: $\pm 2^\circ\text{C}$
- Dimension: 21mm(diameter)*17mm(high)

SP1-I

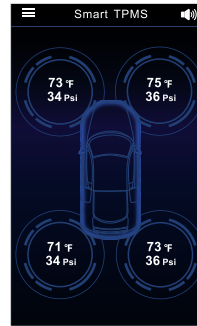


SOLAR POWER TPMS W/ EXTERNAL SENORS & LCD DISPLAY

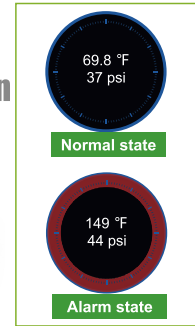
- Working pressure: 0~99 Psi
- Battery life >5 years
- Transmit Frequency: 433.92 MHz
- Working Voltage: 2.1~3.6 V
- Transmit power: <10dBm
- IP: IP67
- Working temperature: -40~120°C
- Storage temperature: -45~125°C
- Pressure accuracy: ± 1.5 Psi
- Temperature accuracy: $\pm 2^\circ\text{C}$
- Dimension: 70mm*53mm*20mm
- Weight: 30g

APP BLUETOOTH TPMS

- App Display on Smart Phone(Andriod or Iphone)
- Signal from TPMS Sensors to Smart Phone Via Bluetooth
- Tires' Pressure data Shew on the Same Screen at the Same Time
- Real-time monitoring the pressure & temperature
- Warning while low and high air pressure / high temperature
- Setup can done on the Phone Easily
- Monitoring Range: 0~51Psi (0~3.5 Bar)
- Suitable for four-wheel car models(even some business auto)

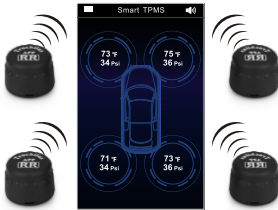


Bluetooth connection



MODEL/NAME/PICTURE SENSOR TECHNICAL PARAMETER MODEL/NAME/PICTURE

BLEAPP-E

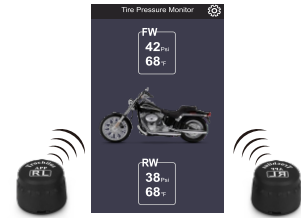


Weight: 8g±1g * 4

CAR BLUETOOTH TPMS W/ EXTERNAL SENSOR

- Processor: 8 bits MOU/SO8, Core: ARMMO
- Working Voltage: 3V
- Working Current: 540uA (Sleep current:2.4uA)
- Bluetooth working frequency:2.4GHz
- Bluetooth transmission power: 0 dBmMAX
- Display mode: App mode(Andriod4.3+, ios7.0+)
- Response time:≤6s.
- Waterproof degree:IP67, Working humidity: 95%MAX
- Tire pressure range:0-99Psi
- Accuracy of tire pressure:±1.5Psi, Accuracy of temperature: ±2°C
- Working temperature:-30°C~+80°C
- Batter capacity: 140mAh (CR1632 for external sensor, over 2 years)
(Caculating based on 4 hours of driving a day)

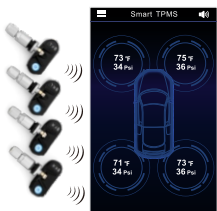
BLEAPP-M



Weight: 8g±1g * 2

MOTORCYCLE BLUETOOTH TPMS W/ EXTERNAL SENSOR

BLEAPP-I



CAR BLUETOOTH TPMS W/ INTERNAL SENSOR

- Processor: 8 bits MOU/SO8, Core: ARMMO
- Working Voltage: 3V
- Working Current: 540uA (Sleep current:2.4uA)
- Bluetooth working frequency:2.4GHz
- Bluetooth transmission power: 0 dBmMAX
- Display mode: App mode(Andriod4.3+, ios7.0+)
- Response time:≤6s
- Waterproof degree:IP67, Working humidity: 95%MAX
- Tire pressure range:0-99Psi
- Accuracy of tire pressure:±1.5Psi, Accuracy of temperature: ±2°C
- Working temperature:-40°C~+125°C
- Battery capacity:345mAh (CR2050 for internal sensor, over 5 years)
(Caculating based on 4 hours of driving a day)
- Weight: 30g±1g * 4 (internal) (16g air nezzle not included)



Company Profile



COMPANY PROFILE

Established in 2001, Shenzhen Sunway Industry Co., Ltd. is a professional manufacturer in car electronics industry, such as **Car Dash Camera, Car Tire Pressure Monitor System (TPMS).**

With Industrial Zone in Hunan Province, headquarter in Shenzhen, and up to 300 employees, Sunway's monthly output is 800,000 pieces with current export of 80% of all products. We export to over 80 countries and regions, especially USA, EU, Japan, Australia, Russia, Mexico, Brazil, India, etc. Most clients are famous over the world, such as **Wal-Mart, Amazon, ALDI, RUSTA, SHO-ME.**

We have a skilled R&D team and be able to process OEM/ODM orders. We provide products with high quality, shortest delivery time, competitive price and more professional service.

As an **ISO9001** certified company and **BSCI** factory, with CE, E-MARK, FCC approval, we continuously work with overseas partners to strengthen our position in the global market.

Qualification & Honor





Shenzhen Sunway Industry Co., LTD

17 Building, Guanlida Industry Zone, Luozu, Shiyan, Baoan District, Shenzhen, Guangdong Province, China 518108

Tel: +86 755 2905 8679

Fax: +86 755 2763 3890

Web: www.sunwayi.com

www.heyecai.com

<http://carelec.en.alibaba.com>

<http://sunwayi.en.alibaba.com>

Email: sun@sunwayi.com

