

# 公司简介

Company profile

## 让激光尽其所能

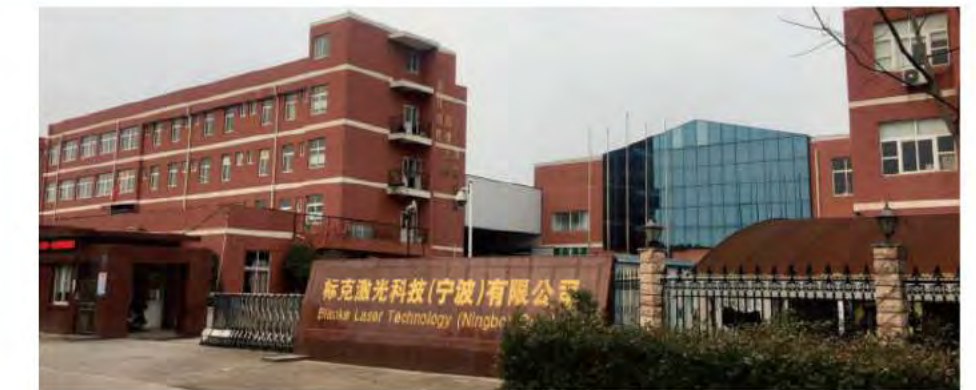
Make the laser do its best

Hangzhou Nuoen Precision Instrument and Equipment Co., Ltd. Specializing in the production of laser marking machine and laser cutting machine. With 12 years of hard work, our products are high quality, fashionable, widely used in a variety of production line, not only has the broad masses of the domestic sales market, but also exported to more than 40 countries all over the world.

Biaoke laser over the years has always adhered to "quality of products in order to survive, credibility and development services" business purposes. Committed to providing you with high-quality products and quality services. Have a professional, dedicated design management team, from product design to the Product assembly, for each aspect and processes are rigorously testing and control.



Xiaoshan Exhibition Hall



Biaoke Laser Technology (Ningbo) Co., Ltd.



Hangzhou Nuoen Precision Instrument & Equipment Co., Ltd.



Shanghai Biaoke Photoelectronics Technology Co., Ltd.



# CATALOG

MADE IN CHINA  
PROPAGANDA BOOK



**BKlaser**

Honest▪rofession▪Service▪Innovation  
Core Competitiveness  
[www.laser-bk.com](http://www.laser-bk.com)

## 1.INTRODUCTION

Company introduction and coporate image

## 2.CUSTOMERS

Customers from all over the world

## 3.PRODUCT

1. Standard Fiber Laser Marking Machine
2. Online Fiber Laser Marking Machine
3. Split Onlie Fiber Laser Marking Machine
4. Handheld Fiber Laser Marking Machine
5. Portable Fiber Laser Marking Machine
6. Mopa La0ser Marking Machine
7. CO2 Laser Marking Machine
8. UV Laser Marking Machine
9. Green Laser Marking Machine
10. Dot Peen Marking Machine

## 4. SERVICE

Quality Service and Technica Suppot

# BK-G20

## FIBER LASER MARKING MACHINE



### PARAMETER

Model	BK-G20/30/50/100
Power	20W 30W 50W 100W
Laser Wavelength	1064nm
Frequency Range	20-80KHZ
Beam Quality	<2
Engraving Line Speed	≤7000mm/s
Minimum Width	0.03mm(depends on the material)
Minimum Character	0.3mm(depends on the material)
Repeat Accuracy	± 0.003mm
Power Supply	90-260V/50Hz-60Hz



### Application Areas:

Fiber laser marking machine is more and more used in aerospace devices, computer accessories, electronic components, hardware, tools, accessories, integrated circuit (IC), electrical appliances, mobile phone communications, precision instruments, watches, jewelry accessories, auto parts, plastic buttons, building materials, PVC pipe, medical equipment, sanitary ware, gifts, signs, musical instruments, watches, cosmetics, food and pharmaceutical packaging equipment, pipeline etc.

### Features:

1. The utility model can be applied to small or small size and easy moving
2. Processing speed is 2-3 times the traditional laser marking machine
3. Air cooling fiber laser, no consumables, low maintenance
4. Integrated pulley design with reasonable design
5. It has strong environmental adaptability and it can work continuously
6. It can mark bar code, two-dimensional code, text, graphics
7. Software runs on WINDOWS platform, Chinese / English interface



## Application Areas:

Fiber laser marking machine is a high precision laser device for marking all metal materials and parts of nonmetallic materials. It can mark metal and a variety of non-metallic materials. Especially suitable for some applications require fine, high precision places. Fiber laser marking machine is used in: aerospace equipment, computer accessories, electronic components, hardware products, tool accessories, integrated circuits (IC), electrical appliances, mobile communications, precision instruments, glasses watches and clocks, jewelry accessories, auto parts , Plastic buttons, building materials, PVC pipe, medical equipment, sanitary ware, craft gifts, signs, musical instruments, watches and clocks, equipment shell, food cosmetics pharmaceutical packaging, assemblyline operations.

## Features:

- 1) Marking the operating structure is simple, portable, erection and flexibility to move
- 2) Network control operation and use a one-touch touch control screen, contain anti-jamming
- 3) Mark clear, delicate, can be permanently saved
- 4) Laser in the fiber wave by the increase in oscillation, loss of small, good stability
- 5) Processing speed, processing speed is 2-3 times than traditional laser marking machine
- 6) Full air-cooled fiber laser, no supplies, low maintenance, high photoelectric conversion rate
- 7) Chinese, English, characters, numbers, symbols, simple pattern

# BK-G20L

## OLINE FIBER LASER MARKING MACHINE

## PARAMETER

Model	BK-G20L/30L/50L/100L	Frequency	20-800KHZ	Min line width	0.01mm
Power	20W/30W/50W/100W	Beam quality	<2/3/5	Min character	0.15mm
Laser wavelength	1064nm	Engraving speed	≤7000mm/s	Power supply	90-260V /50Hz-60Hz
Power consumption	500/1000W	Carving depth	≤0.3-1mm	Repeat accuracy	±0.002

# BK-G20FT

## SPLIT LASER MARKING MACHINE

### PARAMETER

Model	BK-G20/30/50/100FT
Power	20W 30W 50W 100W
Laser Wavelength	1064nm
Frequency Range	20-80KHZ
Beam Quality	<2
Engraving Line Speed	≤7000mm/s
Minimum Width	0.01mm(depends on the material)
Minimum Character	0.15mm(depends on the material)
Repeat Accuracy	± 0.002mm
Power Supply	90-260V/50Hz-60Hz



### Application Areas:

The Fiber Laser Marking Machine is widely applied in electronic component, the communication, the spare parts of automobiles and motorcycles, instrument and meter, aerospace, military products, hardware and machinery, measuring and cutting tools, sanitary equipment, medication, food and beverage, cosmetics, drugs packing, medical appliance, solar energy, handicraft and so on. It is suitable to mark on all kinds of metal and partial nonmetallic material.

### Features:

1. The model according to the user needs, choose to set up a table or line operations
2. Processing speed is 2-3 times the traditional laser marking machine
3. Air cooling fiber laser, no consumables, low maintenance, high photoelectric low cost.
4. Integrated pulley design with reasonable design which can be easy to moved
5. It has strong environmental adaptability and it can work continuously
6. It can mark bar code, two-dimensional code, text, graphics, regular and irregular
7. Software runs on WINDOWS platform, Chinese / English interface, compatible with AUTOCAD, CORELDRAW, PHOTOSHOP and other software file formats, such as PLT, PCW, DXF, BMP and so on, and also can use SHX and TTF fonts directly



# BK-G20BX

## PORTABLE FIBER LASER MARKING MACHINE



### PARAMETER

Model	BK-G20/30/50/100BX
Power	20W 30W 50W 100W
Laser Wavelength	1064nm
Frequency Range	0-100KHZ
Beam Quality	<2/3/5
Engraving Line Speed	≤7000mm/s
Minimum Width	0.03mm(depends on the material)
Minimum Character	0.3mm(depends on the material)
Repeat Accuracy	± 0.003mm
Power Supply	90-260V/50Hz-60Hz
Engrave Depth	≤0.3 /0.5mm
Machine Total Weight	33Kg



### Application Areas:

The Fiber Laser Marking Machine is widely applied in electronic component, the communication, the spare parts of automobiles and motorcycles, instrument and meter, aerospace, military products, hardware and machinery, measuring and cutting tools, sanitary equipment, medication, food and beverage, cosmetics, drugs packing, medical appliance, solar energy, handicraft and so on. It is suitable to mark on all kinds of metal and partial nonmetallic material.

### Features:

1. By increasing laser oscillation in the optical fiber Pori to achieve low loss
3. Processing speed is 2-3 times the traditional laser marking machine
4. Air cooling fiber laser, no consumables, low maintenance, high photoelectric
5. Portable box type design, small size, especially adapted to those need
6. It has strong environmental adaptability and it can work continuously
8. Software runs on WINDOWS platform, Chinese / English interface, compatible with AUTOCAD, CORELDRAW, PHOTOSHOP and other software file formats, such as PLT, PCW, DXF, BMP and so on, and also can use SHX and TTF fonts directly.

# BK-G20S

## HANDHELD FIBER LASER MARKING MACHINE



PARAMETER	
Model	BK-G20S
Power	20W
Laser Wavelength	1064nm
Frequency Range	20-80KHZ
Beam Quality	<2
Engraving Line Speed	≤7000mm/s
Minimum Width	0.03mm(depends on the material)
Minimum Character	0.3mm(depends on the material)
Repeat Accuracy	± 0.003mm
Power Supply	90-260V/50Hz-60Hz
Engrave Depth	≤0.3mm
Machine Total Weight	31Kg

### Application Areas:

Fiber laser marking machine is a high precision laser device for marking all metal materials and parts of nonmetallic materials. It can mark metal and a variety of non-metallic materials Especially suitable for some applications require fine, high precision places.



### Features:

Handheld fiber laser marking machine can be used for some large, inconvenient to move the workpiece marking. The model to achieve a large workpiece of the perfect mark, so that the equipment to find the work of the workpiece principle, simple operation, convenient and quick.

# BK-M20C1

## MOAP LASER MARKING MACHINE



PARAMETER	
Model	BK-M20/30C1
Power	20W 30W
Laser Wavelength	1064nm
Frequency Range	20-80KHZ
Operating System	Windows
Engraving Line Speed	≤7000mm/s
Minimum Width	0.012mm(depends on the material)
Minimum Character	0.3mm(depends on the material)
Repeat Accuracy	± 0.003mm
Power Supply	90-260V/50Hz-60Hz
Engrave Depth	≤0.2mm

### Application Areas:

Mopa fiber laser source mark colorful photo on stainless steel, metal and so on

### Features:

Mopa can mark deep black on aluminum, and colorful on stainless steel.

# BK-C30

## CO2 LASER MARKING MACHINE



### Application Areas:

It is applicable for so many materials like bamboo, coconut shell, paper, plexiglass, PCB board, acrylic, rubber, marble, granite, jade, crystal, leather, fabric and so on the vast majority of non-metallic materials. It was used in craft gifts, advertising decoration, toys, electronic appliances, clothing, medicine, food, paper products and other industries.

### Features:

- Marking machine software running on WINDOWS platform, with Chinese / English interface, compatible with AUTOCAD, CORELDRAW, PHOTOSHOP and other software file formats, such as PLT, PCW, DXF, BMP, it can achieve text symbols, graphic images, Dimension code,

## PARAMETER

Model	BK-C20/30/50/100/150(F)
Power	20W/30W/50W/100W/150W
Laser Wavelength	1064nm
Frequency Range	20-100KHZ
Carving range	110*110mm/140*140mm / 200*200mm optional
Engraving Line Speed	≤5000mm/s
Minimum Width	0.1mm(depends on the material)
Minimum Character	0.4mm(depends on the material)
Repeat Accuracy	±0.01mm
Power Supply	AC220V/50Hz/8A
Engrave Depth	≤2mm/3mm/5mm/8mm
Cooling method	air cooling/water cooling

# BK-C20F

## ONLINE CO2 LASER MARKING MACHINE



### Application Areas:

Carbon dioxide laser marking machine for a wide range of industries, tobacco, liquor, beverages, oil drums, aquatic products, paper packaging, craft gifts, signs, equipment shell, clothing shoes, IC industry, electronic components, food / Pharmaceutical packaging line operation (to meet the operation of 85% of the production line of various types of demand) and so on. The suitable materials include plastic, plastic, rubber, resin, paper, wood, leather, fabric, quartz, glass, acrylic, ceramic, PCB and so on.



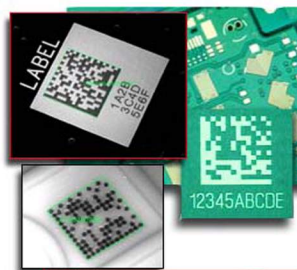
### Features:

- Repeat high precision, stable performance of equipment, user-friendly interface, easy to use
- Non-contact process, marking the effect of permanent, clear mark, carving and cutting efficiency environmental protection, energy saving
- Laser marking can not be modified or erased, there is a counterfeiting effect or effectively prevent the flow or sales link bugsell phenomenon
- Laser inkjet ink and other supplies, safe and environmentally friendly, no maintenance



# BK-W3W

## UV LASER MARKING MACHINE



### PARAMETER

Model	BK-ZW3W/5W/8W
Power	3W/5W/8W
Laser Wavelength	355nm
Frequency Range	5KHz~80KHz
Beam Quality	<2/3/5
Engraving Line Speed	≤800 standard characters/s
Minimum Width	≤0.005mm(depends on the material)
Minimum Character	0.15mm(depends on the material)
Repeat Accuracy	± 0.003mm
Power Supply	220V/single-phase/50Hz/<800W
Engrave Depth	≤0.3 /0.5mm
Laser module life	20000 hours
Operate system	WindowsXP



### Application Areas:

Mainly used in the ultra-fine processing of high-end market, pharmaceuticals, cosmetics, jewelry and other polymer materials, the surface of the bottle marking, the effect is very fine, marked cleaning firm, better than inkjet and no pollution; flexible pcb board marking, Chip, perforated, metal surface coating, plastic buttons, electronic components, gifts, communications equipment, building materials, etc.

### Features:

- 1) High beam quality, and the spot is very small, can achieve ultra-fine marking
- 2) Almost perfect marking quality: 355nm output wavelength the perfect marking result
- 3) UV laser marking machine for a large range
- 4) Heat affected area is very small, there will be no thermal effect, the material
- 5) Marked fast, high efficiency
- 6) Machine performance is stable, small size, low power consumption
- 7) More suitable for the vast majority of metal and non-metallic materials on the marking
- 8) Flexible and convenient operating system: the operation process is humanized
- 9) Dedicated control software is compatible with AutoCAD, CorelDRAW, Photoshop and other software output
- 10) Can support the PLT, PCX, DXF, BMP, JPG and other file formats, you can directly use the TTF font; CCD automatically identify and position the track (Figure), can be used to automatically identify the track, graphics, bar code, two-dimensional code, serial number and other automatic scheduling and modification

# BK-LG4

## GREEN LASER MARKING MACHINE



### PARAMETER

Model	BK-LG4/6/8
Power	4W/6W/10W
Laser Wavelength	532nm
Frequency Range	≤50KHz
Standard carving range	100×100 mm
Engraving Line Speed	≤7000mm/s
Minimum Width	0.015mm(depends on the material)
Minimum Character	0.2mm(depends on the material)
Repeat Accuracy	±0.001mm
Power Supply	220V/single-phase/ 50Hz/10A
Engrave Depth	≤0.1mm
Size(L×W×H)	1250mm×950mm×1230mm



### Application Areas:

Equipment can be applied to the vast majority of metal and non-metallic materials, surface treatment and coating film processing. Such as hardware, ceramics, glass watches, PC, electronic devices, all kinds of instruments, PCB board and control panel, nameplate panels, plastic, etc.; for glass, crystal products, surface and internal sculpture, such as mobile phone screen, LCD screen, optical devices, Automotive glass and so on. Especially suitable for high flame-retardant materials such as marking engraving surface treatment.

### Features:

Green laser marking machine is a high-tech laser technology product, with a good speed of light, high electro-optical conversion speed and low power consumption, the output laser energy stability, laser life longer, maintenance-free features; Optical path preview and focus indication function, shape more beautiful, more safe and convenient operation; configuration of the latest external water cooling system, running with very low noise, high temperature adjustment accuracy, providing a reliable protection for the non-stop work of the equipment; Ultra-fine, can be used for laser marking difficult to fight the laser processing materials (such as crystal, high flame retardant materials); optical mechanical and electrical integration design, assembly line production and automated production line laser processing, without too much labor.

# OTHER DESIGN



FLY FIBER LASER MARKING MACHINE



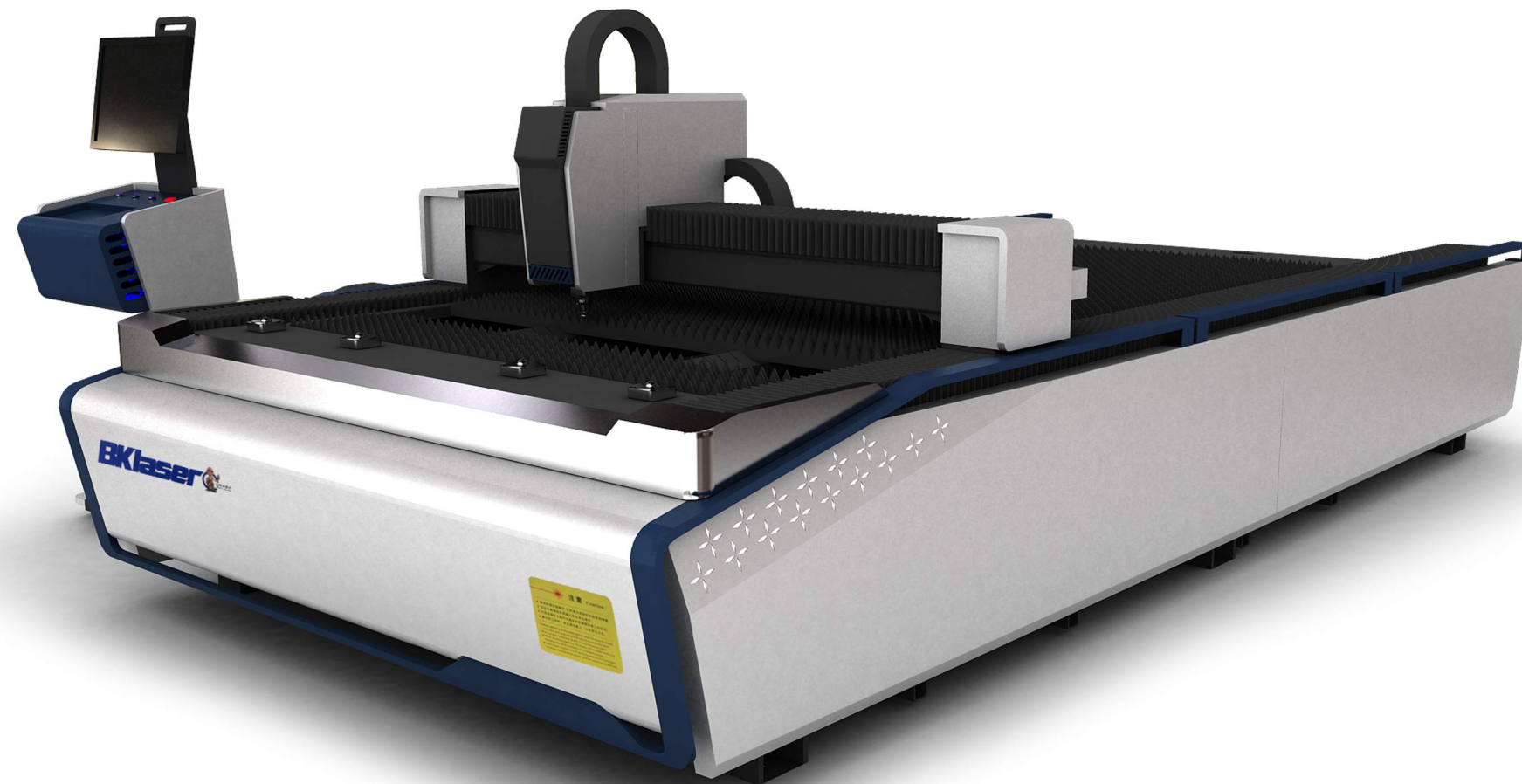
FIBER LASER MARKING MACHINE



COVER FIBER LASER MARKING MACHINE



COVER FIBER LASER MARKING MACHINE



专业的客户服务 | Professional customer service



FFRE SAMPLE MARKING



SHIPPMENT



FREE TESTING



WARRANTY



TEAMVIEW



ONLINE



MANTAIN



TRAINING



PARTS SUPPORT



PHONE