

Our own brand



SKATEBOARDS
FOXEN

TODAY WE WILL RIDE



XINDA

DONGGUAN XINDA SPORTING GOODS CO.,LTD



Dongguan Xinda Sporting Goods Co., Ltd.



FOXEN

SKATEBOARD

Dongguan Xinda Sporting Goods Co., Ltd.

LongBoard ,Skateboard decks ,Skateboards

Address: No. 9th, Xiniupi 1st Industry District, Dalang Town, Dongguan, Guangdong, China

Telephone: 86-769-83132598

Email: Lily@xindafactory.com

Contact Person: Miss Lily Ph:+86-13556619664

Company Information :

Dongguan Xinda Sporting Goods Co., Ltd. Are professional skateboard manufacture, our mainly produce and supply all kinds of styles with safe and professional skateboarding, accessories, PADS and tools for the Professional riders and the active young people. Our factory is located in Dongguan city Guangdong province, China.

On selling style and area, we also provide OEM and ODM services for companies in US, Europe, South America and Australia. With rich experience in manufacturing field, we can create customers samples in 10 days.

Loyalty and honesty are the basic integrity of our business moral principle, We shall be your trust-worthy friend definitely here for always for good. We expect to be in your great service with heartfelt appreciation.

Our company supplies High quality products with favorable price. We're pleased to get your Inquiry and we will come back to as soon as possible. We stick to the principle of "quality first, service first, continuous improvement and innovation to meet the customers" for the management and "zero defect, zero complaints" as the quality objective.

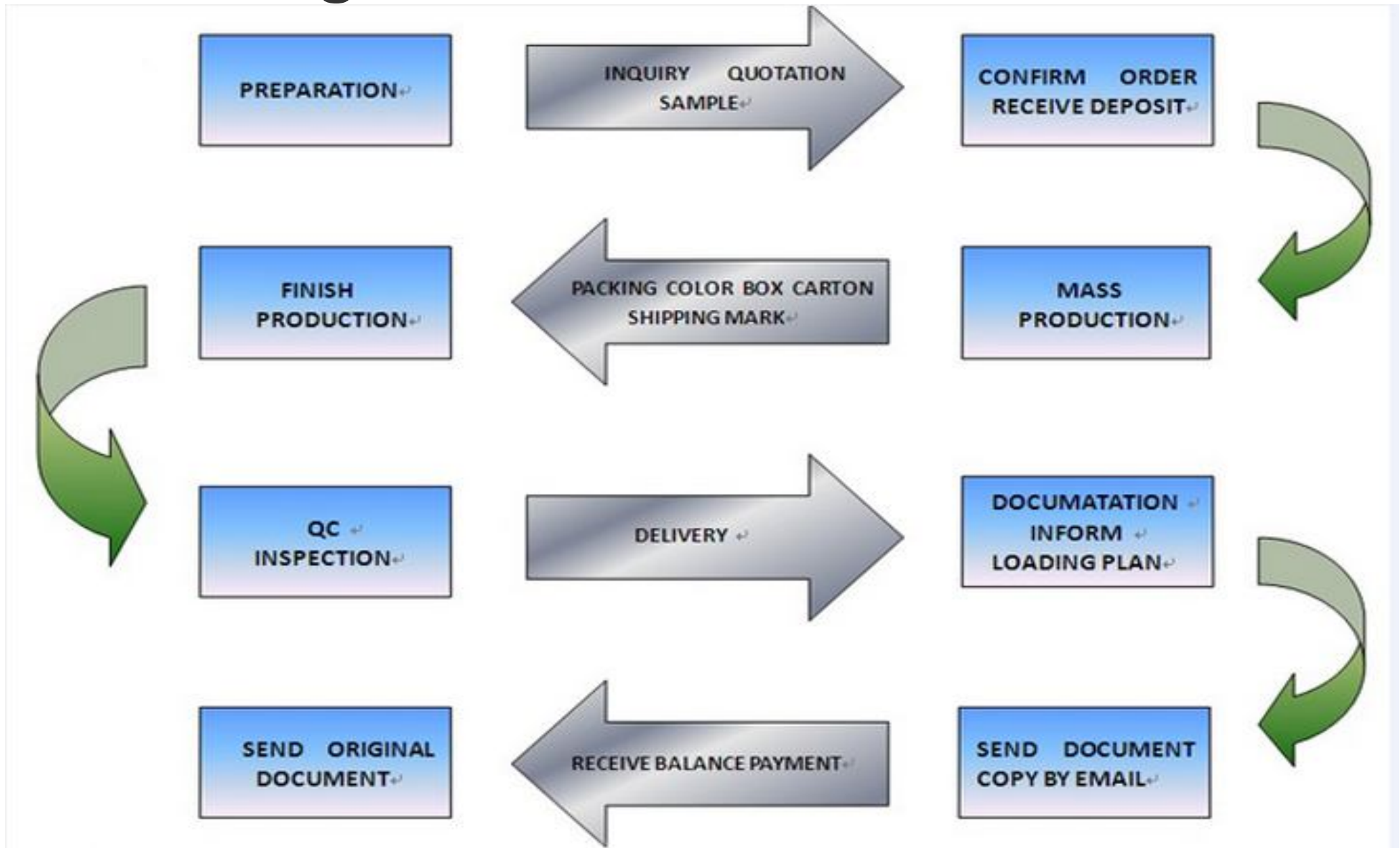
Company Picture :



Samples Show Room :



Order Progress :



Ressing Area:



Shaping & Sanding Area:



Assembling Area:



Finished warehouse:



Veneers Storage Room





DANCING BOARD

DECK

Size:40"*8.5"

Mould No: #11

7Plies USA Hard rock Maple
OS780 Air brushing Griptape
on top with cut out .

Printed logo on bottom and top

TRUCKS

7" Black Aluminium ,Blue SHR
80A Bushings.

WHEELS

70*51mm SHR 80A

Red ,Blue,Green ,Sanded
Abec-9 Bearing /Black



BAMBOO BOARD

DECK

Size:39"*8.5"

Mould No: #20

4 Plies USA Hard rock

Maple+1 Ply Bamboo +1 Ply

Fibre Glass

OS780 Griptape on top with
cut out .

Laser logo on bottom

TRUCKS

7" Blue Aluminium ,Blue SHR
80A Bushings.

WHEELS

70*51mm SHR 78A Red ,Blue
Abec-9 Bearing /Black



LONG BOARD

DECK

Size:36"*9.25"

Mould No: #1

10 Plies USA Hard rock Maple
OS780 Sand finished Griptape
on top with cut out .

Printed logo on bottom and top

TRUCKS

7" Black Aluminium ,Blue SHR
80A Bushings.

WHEELS

70*51mm SHR 80A

Red ,Blue,Green ,Sanded
Abec-9 Bearing /Black



LONG BOARD

DECK

Size:41"*9.75"

Mould No: #16

8 Plies USA Hard rock Maple
OS780 Air brushing Griptape
on top with cut out .

Printed logo on top

TRUCKS

7" Aluminium ,Yellow SHR
80A Bushings.

WHEELS

70*51mm SHR 80A

Red ,Blue,Green ,Sanded
Abec-9 Bearing /Black



DANCING BOARD

DECK

Size:36"*8.5"

Mould No: #20

Top and bottom zebrano bamboo+ 5 Plies riped birch

Clear Sand Griptape

Laser logo on the top

TRUCKS

7" Black Aluminium ,White SHR 80A Bushings.

WHEELS

70*55mm SHR 80A Green Abec-5 Bearing /Black



DANCING BOARD

DECK

Size:37.5"*9.75"

Mould No: #20

Top and bottom special wood

+3 Plies bamboo+ 2 Plies

Canadian maple

Clear Sand Griptape

Laser logo on the bottom

TRUCKS

7" Paris Grey

Aluminium ,White SHR 80A

Bushings.

WHEELS

65*45mm SHR80A light purple

Abec-5 Bearing /Black



LONG BOARD

DECK

Size:42"*10"

Mould No: #22-2

7Plies Hard rock maple

Clear Sand Griptape

Laser logo on the top

TRUCKS

7" Aluminium ,White SHR 80A

Bushings.

WHEELS

75*58mm SHR 80A Red

Abec-9 Bearing /Black



LONG BOARD

DECK

Size:36"*8.5"

Mould No: #20

Top and bottom special wood+

7 Plies Canadian maple

Clear Sand Griptape

Laser logo on the top

TRUCKS

7" Aluminium ,White SHR 80A

Bushings.

WHEELS

75*65mm SHR 80A Yellow

Abec-9 Bearing /Black



DANCING BOARD DECK

Size:46"*9.5"

Mould No: #11

Top and bottom Fibre glass + 5 Plies
Colorful Hard rock maple

Fibre glass Mixed transfer film on the
bottom and top



LONG BOARD

DECK

Size:38"*8.5"

Mould No: #19-1

9 Plies Hard rock maple

Air brushing Griptape

Laser logo on the bottom

TRUCKS

7" Blue Aluminium ,White SHR
80A Bushings.

WHEELS

70*55mm SHR 80A Red
Abec-9 Bearing /Black



LONG BOARD

DECK

Size:46*9.65”

Mould No: #11

3 Plies Hard rock maple +2Plies bamboo +fibre glasses

Air brushing Griptape on the top with heat transferfilm on the bottom

TRUCKS

7” Blue Aluminium ,Black SHR 80A Bushings.

WHEELS

65*51mm SHR 80A Black

Abec-9 Bearing /Black with4MM Riser



LONG BOARD

DECK

Size:46*9.65"

Mould No: #11

3 Plies Hard rock maple +2Plies bamboo +fibre glasses

Air brushing Griptape on the top with heat transferfilm on the bottom

TRUCKS

7" white Aluminium ,Black SHR 80A Bushings.

WHEELS

65*51mm SHR 80A blue

Abec-9 Bearing /Black with4MM Riser



LONG BOARD

DECK

Size:46*9.65"

Mould No: #11

3 Plies Hard rock maple +2Plies bamboo +fibre glasses

Air brushing Griptape on the top with heat transferfilm on the bottom

TRUCKS

7" white Aluminium ,Black SHR 80A Bushings.

WHEELS

65*51mm SHR 80A Pink

Abec-9 Bearing /Black with4MM Riser



LONG BOARD

DECK

Size:46*9.65"

Mould No: #11

3 Plies Hard rock maple +2Plies bamboo +fibre glasses

Air brushing Griptape on the top with heat transferfilm on the bottom

TRUCKS

7" green Aluminium ,Black SHR 80A Bushings.

WHEELS

65*51mm SHR 80A yellow

Abec-9 Bearing /Black with4MM Riser





SHORT BOARD

DECK

Size:26"*7.25"

Mould No: #7

7Plies Hard Rock Maple

Cork on the top

Laser logo on the bottom

TRUCKS

5" IND Black Aluminium ,White
SHR 80A Bushings.

WHEELS

60*45mm SHR 80A Green
and Red Sanded
Abec-9 Bearing /Black



SHORT BOARD

DECK

Size:25.8"*7.75"

Mould No: #24

7 Plies Hard rock maple

Air brushing Griptape on the top

TRUCKS

5" IND Black Aluminium ,White SHR 80A Bushings.

WHEELS

60*45mm SHR 80A Green Sanded

Abec-7 Bearing /Black



SHORT BOARD

DECK

Size:28"*8.75"

Mould No: #24

7 Plies Hard Rock Maple

Air Brushing Griptape

Laser logo on the bottom

TRUCKS

5" IND Black Aluminium ,White
SHR 80A Bushings.

WHEELS

60*46mm SHR 80A Black
Abec-7 Bearing /Black



SHORT BOARD

DECK

Size:26"*7.25"

Mould No: #11

Top and bottom Special wood
+ 7 Plies Hard Rock Maple
Clear Griptape on top

TRUCKS

5" IND Black Aluminium ,White
SHR 80A Bushings.

WHEELS

60*40mm SHR 80A Green
And Red
Abec-7 Bearing /Black



SHORT BOARD

DECK

Size:30.5"*9"

Mould No: #24

7 Plies Hard Rock Maple

Clear Sand Griptape on top

Transfer film on the bottom

TRUCKS

6" Pairs yellow Truck

Aluminium ,White SHR 80A

Bushings.

WHEELS

60*47mm SHR 80A Green

Abec-7 Bearing /Black



CURISER BOARD

DECK

Size:28"*10"

Mould No: #11

7 Plies Hard Rock Maple

Air Brushing Griptape +EVA
on the top

Laser logo on the bottom

TRUCKS

6" Sea gull Truck

Aluminium ,Black SHR 80A
Bushings.

WHEELS

65*45mm SHR 80A Red

Abec-5 Bearing /Black



SHORT BOARD

DECK

Size:27"*9"

Mould No: #20

Special wood on the bottom+
7 Plies Hard Rock Maple

OS780 Griptape

Laser logo on the Bottom

TRUCKS

3.25" Sanded

Aluminium Truck, Red SHR
80A Bushings.

WHEELS

60*45mm SHR 80A Pink
Abec-7 Bearing /Black



FISH BOARD

DECK

Size:33"*10"

Mould No: #11

7 Plies Hard Rock Maple+
Special wood on the bottom
Cut out logo Griptape
Laser logo on the top

TRUCKS

6" Sea Gull Black Aluminium
truck,Red base ; Black SHR
80A Bushings.

WHEELS

65*52mm SHR 80A Green
Abec-7 Bearing /Chrom Steel



CRUISER BOARD

DECK

Size:31"*10"

Mould No: #11

7 Plies Hard Rock Maple +
Special Wood on the bottom
Air Brushing Griptape on top
Laser logo on the bottom

TRUCKS

6" Pairs Yellow Alu Truck
Red SHR 80A Bushings.

WHEELS

65*50mm SHR 80A Light **Blue**
Abec-5 Bearing /Chrom Steel



CRUISER BOARD

DECK

Size:28.5"*9.5"

Mould No: #24

5 Plies Bamboo 2.0MM
Cut out OS780 Griptape
Laser logo on the Bottom

TRUCKS

6.25" Sanded IND Turning
Around Aluminium Truck
White SHR 80A Bushings.

WHEELS

70*45mm SHR 80A Blue
Abec-5 Bearing /Black



SHORT BOARD

DECK

Size:30"*8.75"

Mould No: #23

5 Plies Canadian Maple +
Special wood on the bottom
OS 780 Griptape On top
Laser logo on the bottom

TRUCKS

6" Pairs Grey Alu Truck ,Blue
SHR 80A Bushings.

WHEELS

65*52mm SHR 80A Black
Abec-7 Bearing /Chrom steel



FISH BOARD

DECK

Size:24"*7.25"

Mould No: #7

5 Plies Hard Rock Maple+
Special wood on the bottom
OS780 Griptape On the top
Laser logo on the bottom

TRUCKS

3.25" Sanded Alu Truck ,White
SHR 80A Bushings.

WHEELS

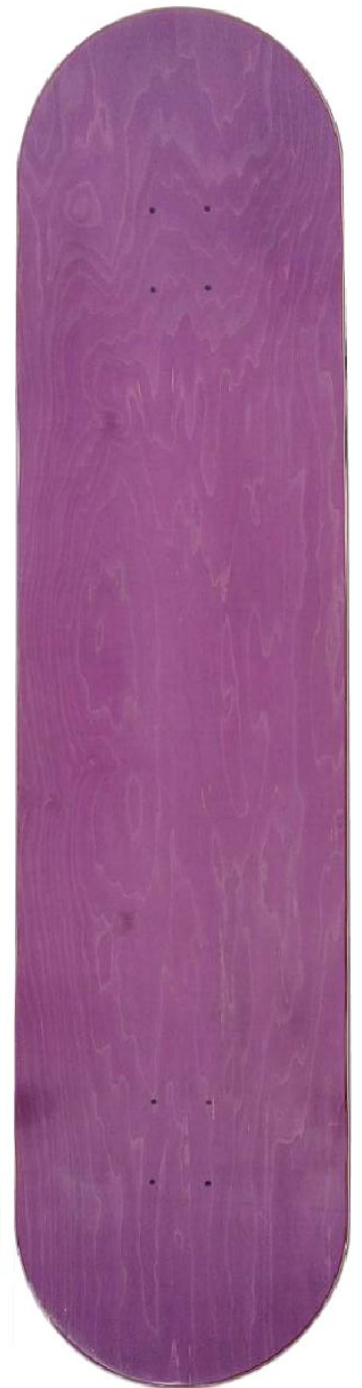
60*45mm SHR 80A Green
Abec-5 Bearing /Black



Size:42"*10"
Mould No: #20
Top and bottom Special Wood + 5 Plies
Hard Rock Maple
Clear Sand Griptape
Laser logo on the Bottom



Size:40"*10"
Mould No: #20
Fibre Glass mix transfer film on
bottom + 7 Plies Hard Rock
Maple







40*8.5" 42*9.5" 42*9.5" 41*9.5" 39*9" 40*10" 40*9.5" 38*8.5" 39*9.5" 39.5*9" 41*9.5"



41*9.5" 40*10" 41*9.5" 40*10" 41*9.5" 38*9.5" 40*9.5" 36*9" 40*10" 38*9" 40*9"



38*10" 37.5*9.5" 40*9.5" 41*9.25" 40*9.5 34.5*9.25" 41*9.5" 41.5*9" 36.5*9" 42*9.5" 40*10"







Classics Deck
Size:42"*10"
5 Plies Bamboo

Classics Deck
Size:42"*10"
7 Plies Hard Rock Maple



Classics Deck
Size:39"*10"
Top and bottom is bamboo +5 Plies Hard
Rock Maple

Classics Deck
Size:45"*9.5"
Top and bottom is bamboo +5
Plies Hard Rock Maple





SPECIALIZING IN THE PRODUCTION OF HIGH
QUALITY PRODUCTS.

ACCEPT CUSTOM

DESIGN, LOGO, SHAPE, TRANSFER FILM, WHEEL,
TRUCK, GRIPTAPE, RAW MATERIAL ETC.

SKATEBOARD /LONGBOARD WHEELS



60*45MM (Any size can customized)
HardNess:76- 86A Rebound:60-80%
Custom logo color and logo available

Dongguan Xinda Sporting Goods Co., Ltd.



60*48MM (Any size can customized)
HardNess:76- 86A Rebound:60-80%
Custom logo color and logo available

www.skateboardequipments.com

-1-



70*45MM (Any size can customized)
HardNess:76- 86A Rebound:60-80%
Custom logo color and logo available



70*51MM (Any size can customized)
HardNess:76- 86A Rebound:60-80%
Custom logo color and logo available

76*53



70*51



88*52



97*52



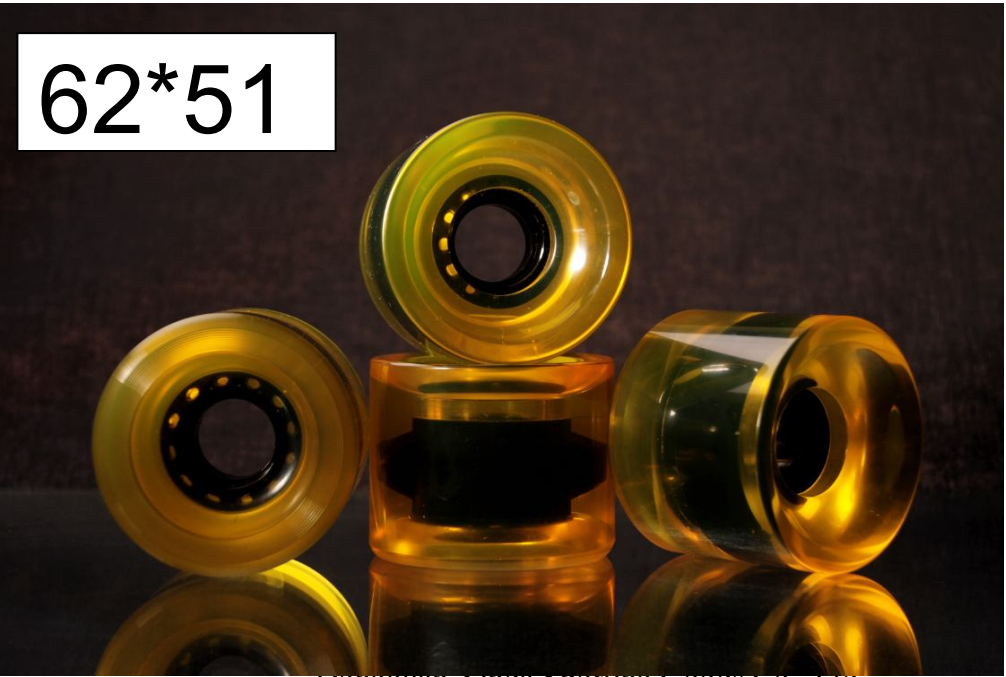
70*51



70*51



62*51



68*57



63*42



65*47



65*47



52*32



51*31



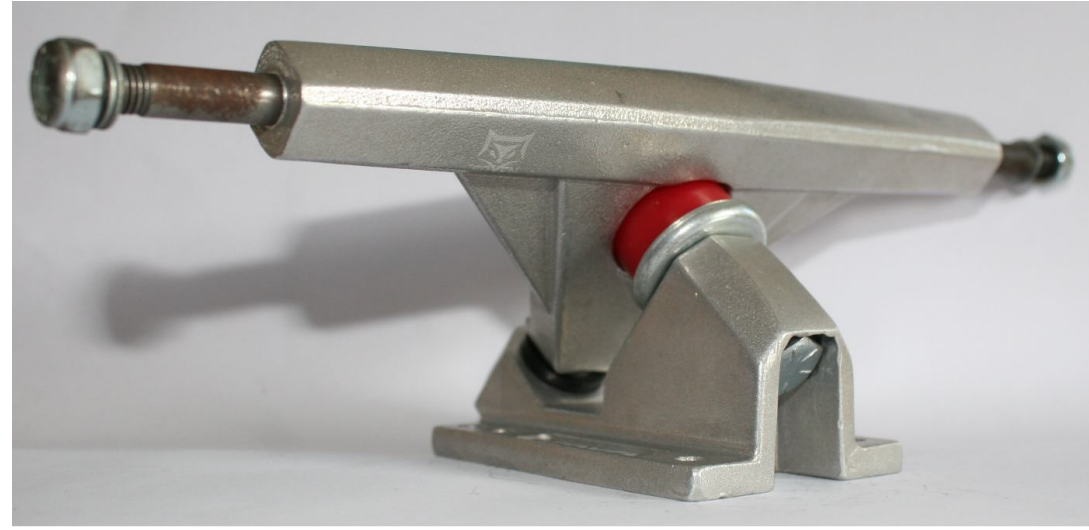
53*31



53*30



SKATEBOARD / LONGBOARD TRUCKS











HELMETS









SUNGLASS







PROTECTIVE GEAR SET :

















COMPANY SERVICE:

We will always ensure our product remain the right match for price and quality.

Whether you are looking for a manufacturing base capable of producing a brand new product; seeking a factory with the ability to add new and innovative products to your ready established range, or simply looking for an alternative or more cost-effective source for established product, we feel sure we can do something on your project.

We are willing and capable of supplying you whatever it is you need whether it is for a one-time order or as part of an on-going range where consistency is vital for the reputation of you and your customers

Packaging & Shipping

Packaging:

Poly bag + Standard export carton; Or customized as per customers' requirements.



Shipping:

Can be delivered by air or by sea.

We design the most space-efficient packing way to make the most of the container space to save freight cost



FAQ:

About Sample: How could I get a sample?

We have to receive your payment for samples and their express delivery cost, then send samples to you. The prices of the samples are 10% extra on the price list. Express delivery charge depends on the quantity of the samples.

2.About Price: could I get your price list?

Yes, please tell us the products (with their model number), quantity you are interested in, then we will offer the price by e-mail.

3. About Shipment: what kind of shipment will you use?

We usually ship the products by boat via our shipping agent, we can ship the products to any place of the world.

4.About Sole-Distributor: what about the terms to become your sole distributor in our city, area or state, country?

If you can sell our products worth US\$ 10,000 ---- 50,000 per month, you can become our sole distributor in your city or area; if you can sell our products worth US\$ 50,000 or above per month, you can become our sole distributor in your state, if you want to be a sole agent in your country, negotiable.

5. About OEM: could we place order by OEM style to produce our own brand products in your factory?

Of course you can. Welcome to do OEM. What you need to do is email us the brand name or logo.

6. About Payment Terms: How we arrange payment?

T/T: Telegraphic Transfer (wire transfer), 30% down payment, balance upon fax/Eamil of the bill of lading. Or L/C: Letter of Credit. Western Union ,Paypal

7. About Lead Time: How soon we can get the shipment?

We will arrange production after confirmation of the order and payment. So all youre requested order items are brand-new produced, we will take 7-15 days to arrange production, book shipping will take less than 7 days. Shipping time depend on the destination place.

8. About MOQ (Minimum Order Quantity): what is the minimum order quantity?

Usually 200-300pcs each model,accepted Mix packing or Mix container.

9. About Shipping Insuranc: how to arrange shipping insuranc?

We can arrange shipping insuranc for you.

10.About Dropship: do you dropship?

We cannot do dropship, the quantity for dropship is usually small, the handling will be high compare with the small quantity.

11. Pictures are for guidance & may not resemble "exactly" a specific model.

Products Specifications are subject to change without prior notice.

12, About Warranty:

Manufacturer carry a 180 days Limited Manufactures Warranty.

13.delivery date ?

LongBoard: 25days

Skateboard: 25days

Skateboard decks::20days

Protective Pads: 30 days

14.Is there mix container service available ?

Yes ! We are experienced in this field .

15.What is the smallest amount of decks in a batch to start the production?

Usually 200-300pcs each model,accepted Mix packing or Mix container.

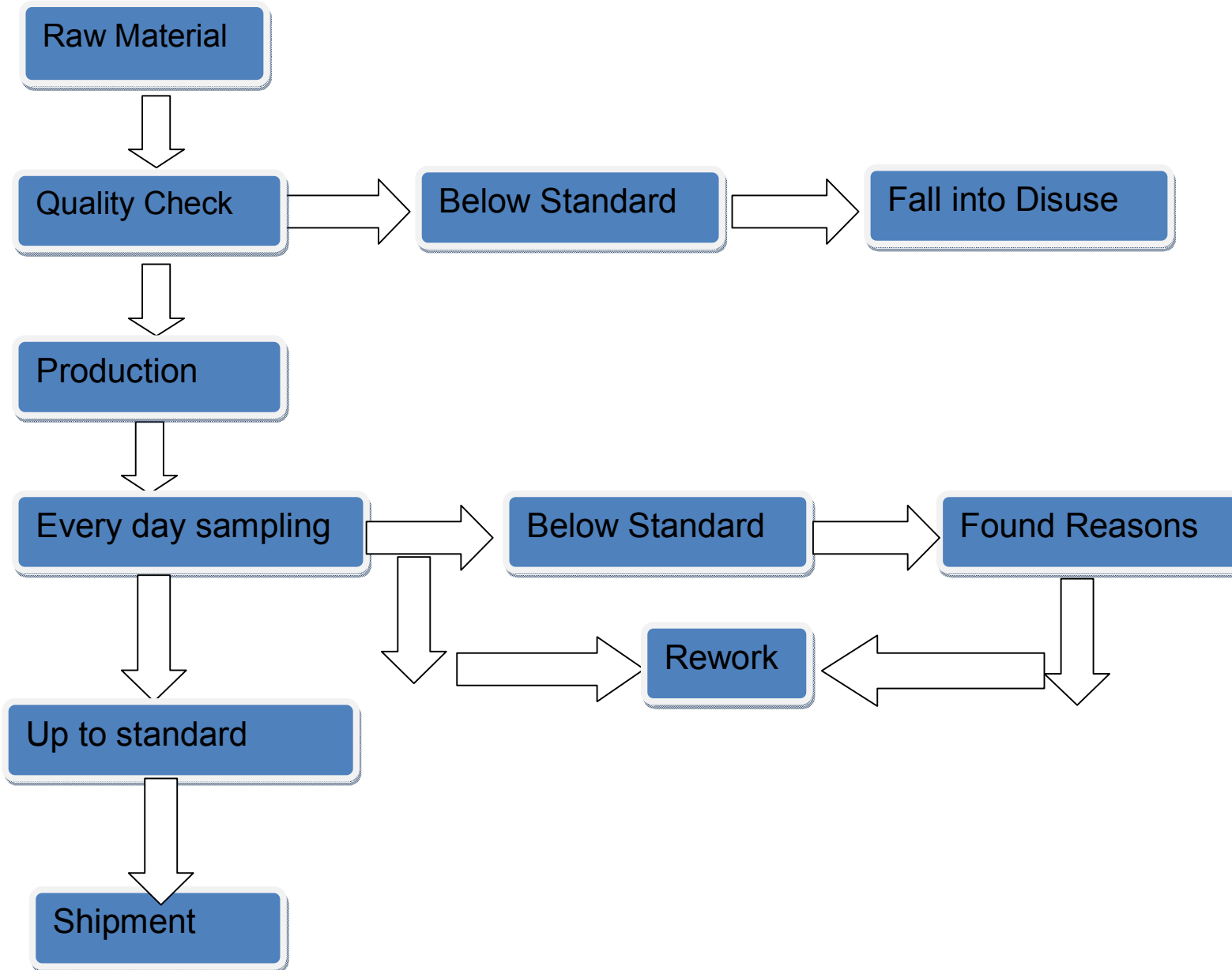
16.Can the batch be made up of decks in different sizes? (eg.: if we order 300 decks total, can we go for 100 in 8", 100 in 8.25" and 100 in 8.5")

Yes ! We are experienced in this field .

17.Do you provide the shipping options or is it left for us to find our own courier?

Yes .We can provided shiping optinos .Of course you can find your own courier

QUALITY-CONTROL-FLOW-CHART:





FOXEN
SKATEBOARDS

2017



2017

www.skateboardequipments.com