



Jzz Auto

Exhaust Parts



**EXHAUST TIPS
MUFFLER**

**RESONATOR
OEM MUFFLER AND
CATALYSIS**

S/STEEL TAIL PIPES _____ P1-38

UNIVERSAL MUFFLER _____ P39-57

RESONATOR MUFFLERS _____ P58-62

**DIRECT FIT EXHAUST SYSTEM,
CATALYTIC CONVERTER, TAIL PIPE** _____ P63-95

**FLEXIBLE PIPE, FLANGES, HANGER,
X Y PIPE, ELLOWS, EXHAUST WRAP,CLAMP** _____ P96-97

O2 CEL FIX ADAPTER _____ P98

UNIVERSAL CATALYTIC CONVERTER _____ P99

EXHAUST VALVE _____ P100-101



CODE	IN	OUT	LEN
DJ1013a	63(2.5")	138*76	213
DJ1013b	51(2")	138*76	186



CODE	IN	OUT	LEN
DJ1013d	63(2.5")	138*76	213
DJ1013e	51(2")	138*76	186



DJ1013 without mesh

IN	63 (2.5")
OUT	138*76
LEN	213



DJ1013c

IN	63 (2.5")
OUT	138*76
LEN	213



DJ1013f

IN	57 (2 1/4")
OUT	100*68
LEN	153



DJ1018

IN	88*133
OUT	138*67
LEN	161





DJ1018a

IN 133*88

OUT 138*67

LEN 161



Technology polishing and manufacturing process make excellent product.



DJ1023

IN 63 (2.5")

OUT 138*76

LEN 213



DJ1023a

IN 63 (2.5")

OUT 138*76

LEN 228

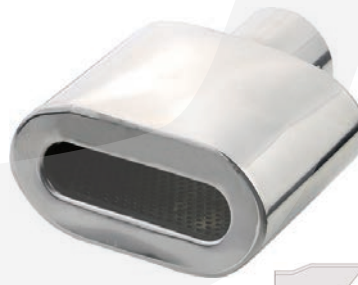


DJ1023b

IN 63 (2.5")

OUT 138*76

LEN 390



DJ1023c

IN 57 (2.25")

OUT 143*68

LEN 158



DJ1023d

IN 51 (2")

OUT 130*80

LEN 140



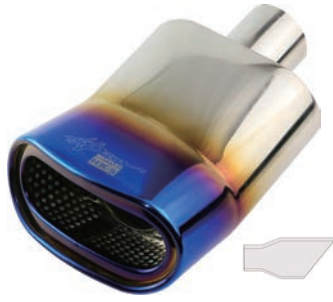
DJ1023e

IN 63 (2")

OUT 138*76

LEN 213





DJ1023f

IN	51 (2")
OUT	137*73
LEN	228



DJ1027

IN	63 (2.5")
OUT	100*75
LEN	180



DJ1028

IN	77*94
OUT	91*88
LEN	121



DJ1028a

IN	73 (2 4/5")
OUT	96*86
LEN	136

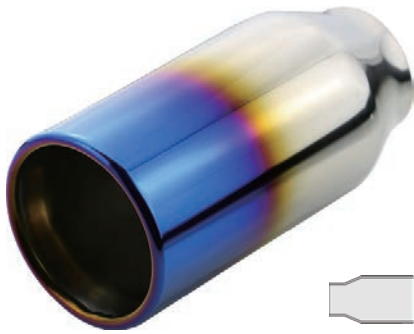


DJ1028b

IN	77*94
OUT	96*72
LEN	135



HAVE FAITH IN YOURSELF



CODE	IN	OUT	LEN
DJ2017e	51(2")	76(3")	150
DJ2017f	51(2")	89(3.5")	155
DJ2017g	51(2")	102(4")	155
DJ2017h	51(2")	114(4.5")	155

DJ2017o	63(2.5")	89(3.5")	150
---------	----------	----------	-----



CODE	IN	OUT	LEN
DJ2027e	51(2")	76(3")	150
DJ2027f	51(2")	89(3.5")	155
DJ2027g	51(2")	102(4")	155
DJ2027h	51(2")	114(4.5")	155



DJ2027m

IN	63 (2.5")
OUT	89 (3.5")
LEN	180



DJ2027z

IN	63 (2.5")
OUT	102(4")
LEN	150



CODE	IN	OUT	LEN
DJ2013	51(2")	102(4")	145
DJ2013a	51(2")	114(4.5")	145
DJ2013b	76(3")	102(4")	145



CODE	IN	OUT	LEN
DJ2023d	51(2")	102(4")	145
DJ2023e	51(2")	114(4.5")	145
DJ2023i	76(3")	102(4")	145



DJ2023

IN	63 (2.5")
OUT	89 (3.5")
LEN	155



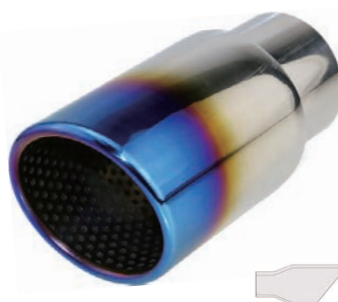
DJ2023a

IN	63 (2.5")
OUT	89 (3.5")
LEN	155



DJ2023b

IN	63 (2.5")
OUT	89 (3.5")
LEN	155



DJ2023c

IN	76 (3")
OUT	102 (4")
LEN	176





CODE	IN	OUT	LEN
DJ2017i	102(4")	114(4.5")	344
DJ2017j	76(3")	100(4")	257



CODE	IN	OUT	LEN
DJ2027j	102(4")	114(4.5")	270
DJ2027k	76(3")	89(3.5")	218



CODE	IN	OUT	LEN
DJ2027o	89(3.5")	102(4")	230
DJ2027p	89(3.5")	102(4")	303
DJ2027q	89(3.5")	102(4")	353
DJ2027r	89(3.5")	102(4")	410
DJ2027s	89(3.5")	102(4")	506





CODE	IN	OUT	LEN
------	----	-----	-----

DJ2018	57(2 1/4")	57(2 1/4")	110
DJ2018a	67(2 3/5")	67(2 3/5")	117



DJ2018c

IN	76 (3")
OUT	76 (3")
LEN	113



DJ2017k

IN	89 (3.5")
OUT	102 (4")
LEN	500



DJ2017

IN	100 (4")
OUT	114 (4.5")
LEN	184



DJ2017a

IN	51 (2")
OUT	76 (3")
LEN	131



DJ2017b

IN	76 (3")
OUT	89 (3.5")
LEN	160



DJ2017c

IN	76 (3")
OUT	102 (4")
LEN	212





DJ2023f

IN 130 (5 1/5")

OUT 177 (7")

LEN 380



DJ2023g

IN 71 (2 4/5")

OUT 102 (4")

LEN 120



DJ2023h

IN 63 (2.5")

OUT 127 (5")

LEN 570



DJ2027

IN 51 (2")

OUT 63 (2.5")

LEN 112



DJ2027a

IN 48 (1 9/10")

OUT 76 (3")

LEN 93



DJ2027b

IN 63 (2.5")

OUT 76 (3")

LEN 150



DJ2027c

IN 70 (2 4/5")

OUT 76 (3")

LEN 188



DJ2027d

IN 63 (2.5")

OUT 76 (3")

LEN 150





DJ2017l

IN	57 (2 1/4")
OUT	102 (4")
LEN	203



DJ2017m

IN	51 (2")
OUT	63 (2.5")
LEN	112



DJ2017n

IN	70 (2 4/5")
OUT	76 (3")
LEN	155



DJ2018b

IN	63 (2.5")
OUT	63 (2.5")
LEN	170



DJ2027i

IN	76 (3")
OUT	102 (4")
LEN	225



DJ2027l

IN	63 (2.5")
OUT	89 (3.5")
LEN	198



DJ2027n

IN	57 (2 1/4")
OUT	89 (3.5")
LEN	230



DJ2027t

IN	100 (4")
OUT	114(4.5")
LEN	184





CODE	IN	OUT	LEN
DJ2028	70(2.8")	70(2.8")	137
DJ2028a	76(3")	76(3")	137



DJ2017d

IN	60 (2 2/5")
OUT	80 (3 1/5")
LEN	183



DJ2027u

IN	60 (2 2/5")
OUT	89 (3.5")
LEN	168



DJ2027v

IN	60 (2 2/5")
OUT	82*78
LEN	176



DJ2027w

IN	60 (2 2/5")
OUT	76 (3")
LEN	181



DJ2027x

IN	152 (6")
OUT	160(6 1/4")
LEN	290



DJ2027y

IN	58 (2 1/4")
OUT	67 (2.6")
LEN	147



CODE	IN	OUT	LEN	
DJ2027za	80(3 1/5")	90(3.5")	140	Audi Q6
DJ2027zb	90(3.5")	102(4")	180	Audi Q7



DJ2028b

IN	76 (3")
OUT	76 (3")
LEN	120



DJ2028c

IN	63 (2.5")
OUT	76 (3")
LEN	143



DJ2028d

IN	102 (4")
OUT	102 (4")
LEN	193



DJ2028e

IN	152 (6")
OUT	152 (6")
LEN	201





CODE	IN	OUT	LEN
DJ3027	57(2 1/4")	125*75(5"*3")	200
DJ3027c	57(2 1/4")	125*75(5"*3")	170



DJ3023

IN	60 (2 2/5")
OUT	100*76 (4"*3")
LEN	128



DJ3023a

IN	51 (2")
OUT	114*85 (4.5"*3.5")
LEN	152



DJ3023b

IN	54 (2 1/10")
OUT	125*75 (5"*3")
LEN	165



DJ3023d

IN	63 (2.5")
OUT	105*79 (4"*3")
LEN	160



DJ3023e

IN	63 (2.5")
OUT	105*79 (4"*3")
LEN	160



DJ3023f

IN	63 (2.5")
OUT	114*85 (4.5"*3.5")
LEN	230



DJ3023g

IN 71 (2 4/5")
OUT 110*95
LEN 120



DJ3023h

IN 67 (2 3/5")
OUT 145*95
LEN 180



DJ3023i

IN 63 (2.5")
OUT 115*88
LEN 220



DJ3027a

IN 51 (2")
OUT 125*75 (5"*3")
LEN 213



DJ3027b

IN 60 (2 2/5")
OUT 82*72
LEN 179



DJ3027d

IN 63 (2.5")
OUT 100*80 (4"*3 1/5")
LEN 195



DJ3027e

IN 67 (2 3/5")
OUT 110*95
LEN 185



DJ3027f

IN 63 (2 1/2")

OUT 152*98

LEN 208



*Audi S5 B8 AudiRS
VW Scirocco R Style VW Golf 5 6 7
Exhaust tips*



DJ3028

IN 63/70 (2.5" 2 4/5")

OUT 105*85 (4"*3.5")

LEN 140



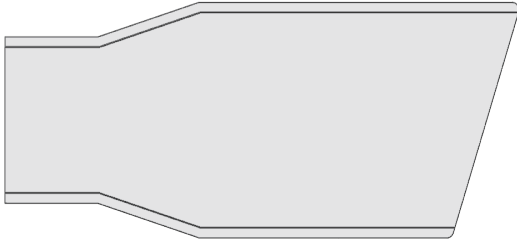
DJ3029m

IN 63 (2.5")

OUT 85*67

LEN 140





IN 63 (2.5")
OUT 85*67
LEN 140



DJ3029



DJ3029a



DJ3029b



DJ3029c



DJ3029d



DJ3029e



DJ3029f



DJ3029g



DJ3029h



DJ3029i



DJ3029j



DJ3029k



DJ3029l



CODE	IN	OUT	LEN
DM2017a	51(2")	76(3")	150
DM2017b	51(2")	89(3.5")	155
DM2017f	63(2.5")	89(3.5")	155
DM2017g	76(3")	89(3.5")	155
DM2017c	60(2 2/5")	102(4")	155
DM2017h	63(2.5")	102(4")	155
DM2017d	63(2.5")	114(4.5")	155



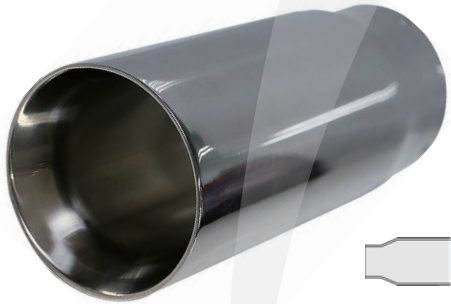
CODE	IN	OUT	LEN
DM2027a	51(2")	76(3")	150
DM2027b	51(2")	89(3.5")	155
DM2027l	63(2.5")	89(3.5")	155
DM2027m	76(3")	89(3.5")	155
DM2027c	60(2 2/5")	102(4")	155
DM2027d	63(2.5")	114(4.5")	155



Tips: We can customize various logos



CODE	IN	OUT	LEN
DM2023	63(2.5")	89(3.5")	170
DM2023a	63(2.5")	114(4.5")	150
DM2023b	63(2.5")	102(4")	150
DM2023c	63(2.5")	127(5")	150



CODE	IN	OUT	LEN
DM2017e	76(3")	80(3 1/5")	148
DM2017i	76(2")	80(3 1/5")	190



CODE	IN	OUT	LEN
DM2027e	76(3")	102(4")	177
DM2027f	63(2.5")	114(4.5")	230
DM2027g	63(2.5")	127(5")	250

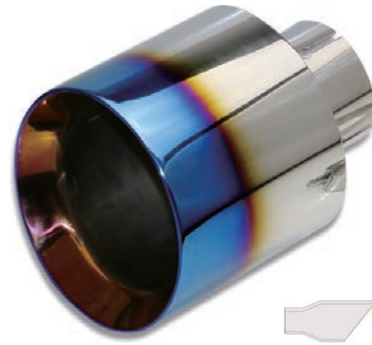


DM2013

IN 63 (2.5")

OUT 89 (3.5")

LEN 165



DM2027h

IN 63 (2.5")

OUT 114 (4.5")

LEN 152

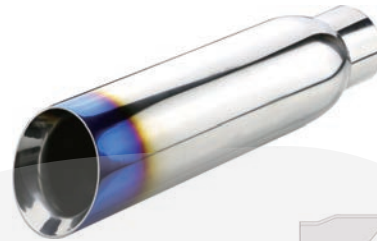


DM2027i

IN 102 (4")

OUT 150 (6")

LEN 385



DM2027j

IN 76 (3")

OUT 102 (4")

LEN 600



DM2027k

IN 51 (2")

OUT 102(4")

LEN 150



DM2027n

IN 67 (2 3/5")

OUT 102 (4")

LEN 240



DM2027o

IN 67 (2 3/5")

OUT 89 (3.5")

LEN 140



DM2028

IN 63 (2.5")

OUT 89 (3.5")

LEN 150





CODE	IN	OUT	LEN
DW2013	63(2.5")	89(3.5")	180
DW2013a	63(2.5")	102(4")	180



CODE	IN	OUT	LEN
DW2017	51(2")	76(3")	145
DW2017a	51(2")	89(3.5")	160
DW2017b	51(2")	102(4")	170



CODE	IN	OUT	LEN
DW2013b	63(2.5")	79(3 1/10")	175
DW2013c	63(2.5")	89(3.5")	175
DW2013d	63(2.5")	102(4")	175



CODE	IN	OUT	LEN
DW2018a	63(2.5")	79(3 1/10")	125
DW2018b	63(2.5")	89(3.5")	125
DW2018c	63(2.5")	102(4")	125





CODE	IN	OUT	LEN
DW2023a	63(2.5")	76(3")	155
DW2023b	63(2.5")	89(3.5")	155
DW2023c	63(2.5")	102(4")	155
DW2023d	63(2.5")	114(4.5")	155
DW2023t	51(2.5")	89(3.5")	155



CODE	IN	OUT	LEN
DW2023e	63(2.5")	76(3")	165
DW2023f	63(2.5")	89(3.5")	165
DW2023g	63(2.5")	102(4")	165
DW2023h	63(2.5")	114(4.5")	165
DW2023r	76(3")	114(4.5")	165



CODE	IN	OUT	LEN
DW2023n	63(2.5")	89(3.5")	160
DW2023o	63(2.5")	102(4")	160
DW2023p	63(2.5")	114(4.5")	160





CODE	IN	OUT	LEN
DW3023	63(2.5")	105*78(4"*3")	145
DW3023a	63(2.5")	116*80(4.5"*3 ¹ / ₅ ")	145
DW3023b	63(2.5")	150*80(6"*3 ¹ / ₅ ")	145



DW2023w

IN	67 (2 ³ / ₅ ")
OUT	89 (3.5")
LEN	165



DW2013e

IN	63 (2.5")
OUT	89 (3.5")
LEN	160



DW2023u

IN	63 (2.5")
OUT	89 (3.5")
LEN	155



DW2023v

IN	71 (2 ⁴ / ₅ ")
OUT	101 (4")
LEN	120



DW2023m

IN 63 (2.5")

OUT 89 (3.5")

LEN 160

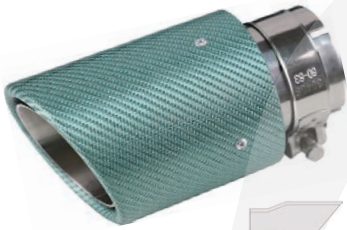


DW2023i

IN 63 (2.5")

OUT 89 (3.5")

LEN 165



DW2023j

IN 63 (2.5")

OUT 89 (3.5")

LEN 165



DW2023k

IN 63 (2.5")

OUT 102 (4")

LEN 160



DW2023l

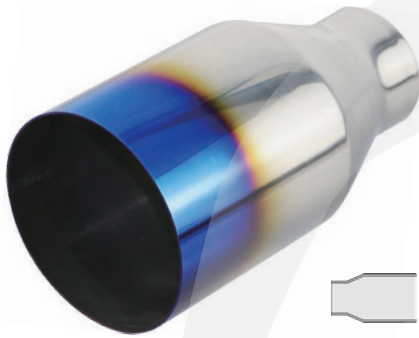
IN 63 (2.5")

OUT 102 (4")

LEN 160



CODE	IN	OUT	LEN
DQ2017	63(2.5")	76(3 ")	120
DQ2017a	76(3")	80(3 1/5")	148
DQ2017b	76(3")	80(3 1/5")	190



CODE	IN	OUT	LEN
DQ2017c	63(2.5")	102(4")	175
DQ2017d	63(2.5")	114(4.5")	175



CODE	IN	OUT	LEN
DQ2027	63(2.5")	102(4")	175
DQ2027a	63(2.5")	114(4.5")	175



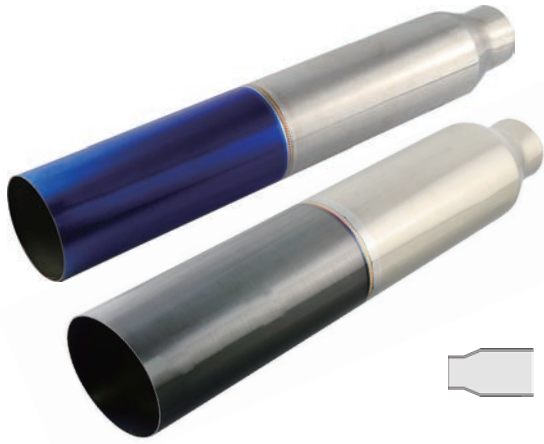
DQ1027

IN	63 (2.5")
OUT	76 (3")
LEN	150

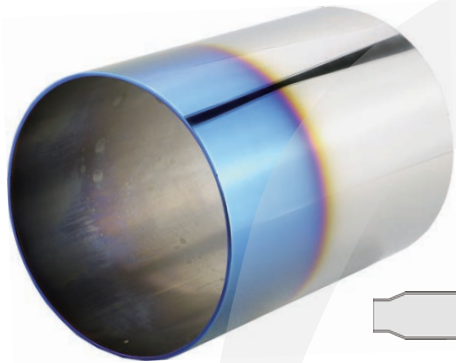


DQ2023

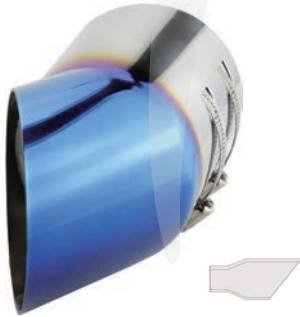
IN	127 (5")
OUT	165 (6.5")
LEN	965



CODE	IN	OUT	LEN
DQ2017e	63(2.5")	89(3.5")	520
DQ2017f	63(2.5")	102(4")	520



CODE	IN	OUT	LEN
DQ2018	89(3.5")	89(3.5")	127
DQ2018b	102(4")	102(4")	152
DQ2018c	114(4.5")	114(4.5")	152



DQ2027b

IN	102 (4")
OUT	134 (5 1/4")
LEN	230



DQ2027j

IN	70 (2 4/5")
OUT	76 (3")
LEN	155



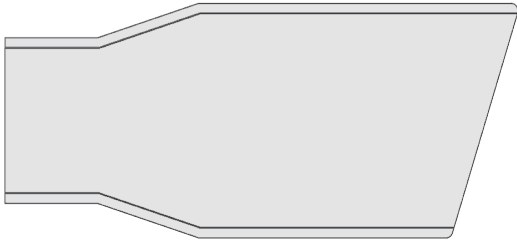
DQ2027k

IN	107 (4 1/5")
OUT	102 (4")
LEN	350



DQ2028

IN	102 (4")
OUT	102 (4")
LEN	230



IN 63 (2.5")

OUT 76 (3")

LEN 150



DQ2027c



DQ2027d



DQ2027e



DQ2027f



DQ2027g



DQ2027h



DQ2027i



Straight Type



CODE	IN	OUT	LEN
EJ20111a	51 (2")	76 (3")	200
EJ20111b	63 (2.5")	89 (3.5")	240



CODE	IN	OUT	LEN
EJ20111c	51 (2")	76 (3")	200
EJ20111d	63 (2.5")	89 (3.5")	240



CODE	IN	OUT	LEN
EJ20111e	76 (3")	102 (4")	250



CODE	IN	OUT	LEN
EJ20111f	63 (2.5")	89 (3.5")	7.5"



CODE	IN	OUT	LEN
EJ20111g	51 (2")	76 (3")	200
EJ20111h	63 (2.5")	89 (3.5")	230

Slant Type



CODE	IN	OUT	LEN
EJ20211a	51 (2")	76 (3")	200
EJ20211b	63 (2.5")	89 (3.5")	240



CODE	IN	OUT	LEN
EJ20211c	51 (2")	76 (3")	200
EJ20211d	63 (2.5")	89 (3.5")	240
EJ20211i	51 (2")	89 (3.5")	240
EJ20211j	63 (2.5")	76 (3")	240
EJ20211k	57 (2 ⁶ / ₂₅ "	89 (3.5")	240



CODE	IN	OUT	LEN
EJ20211e	63 (2.5")	76 (3")	245
EJ20211f	57 (2 ⁶ / ₂₅ "	89 (3.5")	250



CODE	IN	OUT	LEN
EJ20211g	76 (3")	102 (4")	250



EJ20111

IN	57 (2 6/25")
OUT	89 (3.5")
LEN	250



EJ20211l

IN	63 (2.5")
OUT	89 (3.5")
LEN	250



EJ20113

IN	57 (2 6/25")
OUT	89 (3.5")
LEN	200



EJ20113a

IN	57 (2 6/25")
OUT	89 (3.5")
LEN	200



EJ20211

IN	63 (2.5")
OUT	89 (3.5")
LEN	250



EJ20211h

IN	50 (2")
OUT	89 (3.5")
LEN	220



EJ10211

IN	63 (2.5")
OUT	128*80(5"*3 3/20")
LEN	250



EJ20212b

IN	54 (2 3/25")
OUT	89 (3.5")
LEN	248



EJ20212c

IN	63 (2.5")
OUT	89 (3.5")
LEN	245



EJ20212d

IN	57 (2 6/25")
OUT	89 (3.5")
LEN	250



EJ20213

IN	63 (2.5")
OUT	89 (3.5")
LEN	260



EJ2028

IN	56 (2 1/5")
OUT	76 (3")
LEN	180



EJ10212

IN	63 (2.5")
OUT	95*75 (3 3/4"*3)
LEN	240



EJ20112

IN	63 (2.5")
OUT	76 (3")
LEN	225



EJ10116a

IN	63 (2.5")
OUT	70 (2 3/4")
LEN	155



EJ10116b

IN	63 (2.5")
OUT	70 (2 3/4")
LEN	170



EJ20112a

IN	51 (2")
OUT	89 (3.5")
LEN	294



EJ2018

IN	63 (2.5")
OUT	63 (2.5")
LEN	170



EJ2019

IN	63 (2.5")
OUT	63 (2.5")
LEN	168



EJ2019a

IN	63 (2.5")
OUT	63 (2.5")
LEN	168



EJ20212

IN	63 (2.5")
OUT	76 (3")
LEN	222



EJ20212a

IN	63 (2.5")
OUT	63 (2.5")
LEN	213



EJ20213a

IN	63 (2.5")
OUT	63 (2.5")
LEN	183



EJ30214

IN	63 (2.5")
OUT	115*85 (4.5"*3 7/20")
LEN	190



EM20112

IN	51 (2")
OUT	63 (2.5")
LEN	294



EM20212j

IN	51 (2")
OUT	63 (2.5")
LEN	210



EM20115a

IN	63 (2.5")
OUT	89 (3.5")
LEN	240



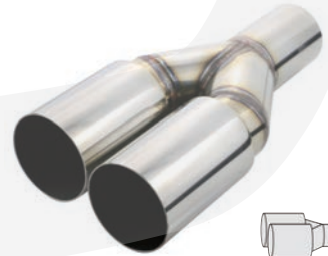
EW20112

IN	63 (2.5")
OUT	76 (3")
LEN	215



EQ10214

IN	67 (2 16/25")
OUT	102*50 (")
LEN	210



EQ20111

IN	63 (2.5")
OUT	76 (3")
LEN	255



EQ20111a

IN	76 (3")
OUT	102 (4")
LEN	235



EQ20212

IN	63 (2.5")
OUT	54 (2 3/25")
LEN	250



EQ20212a

IN 51 (2")

OUT 76 (3")



LEN 200



EQ20212b

IN 57 (2 1/25")

OUT 73 (3 4/5")



LEN 215



EQ20215

IN 60 (2 9/25")

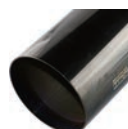
OUT 76 (3")



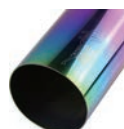
LEN 335



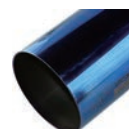
Tips:Color?? No Problem!!



Black



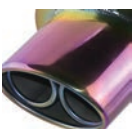
Rainbow



Blue



Gold



Purple



CODE	IN	OUT	LEN
------	----	-----	-----

EM20111a	51 (2")	76 (3")	200
----------	---------	---------	-----

EM20111b	63 (2.5")	89 (3.5")	240
----------	-----------	-----------	-----



EM20111c	51 (2")	76 (3")	200
----------	---------	---------	-----

EM20111d	63 (2.5")	89 (3.5")	240
----------	-----------	-----------	-----

EM20111e	63 (2.5")	102 (4")	245
----------	-----------	----------	-----



CODE	IN	OUT	LEN
------	----	-----	-----

EM20211a	51 (2")	76 (3")	200
----------	---------	---------	-----

EM20211b	63 (2.5")	89 (3.5")	240
----------	-----------	-----------	-----



EM20211c	51 (2")	76 (3")	200
----------	---------	---------	-----

EM20211d	63 (2.5")	89 (3.5")	240
----------	-----------	-----------	-----



Tips:



straight

slant

left and right

same length



Straight Type

CODE	IN	OUT	LEN
EM20112a	51 (2")	76 (3")	200
EM20112b	63 (2.5")	89 (3.5")	240



CODE	IN	OUT	LEN
EM20112c	51 (2")	76 (3")	200
EM20112d	63 (2.5")	89 (3.5")	240



EM20112e

IN	63 (2.5")
OUT	89 (3.5")
LEN	240



EM20112f

IN	63 (2.5")
OUT	89 (3.5")
LEN	245



Slant Type



CODE	IN	OUT	LEN
-------------	-----------	------------	------------

EM20212a	51 (2")	76 (3")	200
----------	---------	---------	-----

EM20212b	63 (2.5")	89 (3.5")	240
----------	-----------	-----------	-----



CODE	IN	OUT	LEN
-------------	-----------	------------	------------

EM20212c	51 (2")	76 (3")	200
----------	---------	---------	-----

EM20212d	63 (2.5")	89 (3.5")	240
----------	-----------	-----------	-----



EM20212g

IN	57 (2 6/25")
OUT	89 (3.5")
LEN	191



EM20212h

IN	76 (3")
OUT	102 (4")
LEN	570



CODE	IN	OUT	LEN
EM20212e	51 (2")	76 (3")	200
EM20212f	63 (2.5")	89 (3.5")	240
EM20212i	63 (2.5")	102 (4")	240



CODE	IN	OUT	LEN
EW20111d-AK	51 (2")	76 (3")	190
EW20111f-AK	51 (2")	89 (3.5")	190



EW20111d	51 (2")	76 (3")	190
EW20111f	51 (2")	89 (3.5")	190



EW20111g

IN	51 (2")
OUT	89 (3.5")
LEN	190



We definitely do not use inferior carbon fiber materials.



EJ30211

IN	54 (2 3/25")
OUT	125*75
LEN	255



EJ30212

IN	58 (2 7/25")
OUT	115*85
LEN	250



EJ30213

IN	63 (2.5")
OUT	115*85
LEN	250



EJ30213a

IN	63 (2.5")
OUT	125*75
LEN	250



EJ30213b

IN	63 (2.5")
OUT	115*85
LEN	250



EJ30215a

IN	63 (2.5")
OUT	125*75
LEN	250





CODE	IN	OUT	LEN
EW20211a	63 (2.5")	76 (3")	240
EW20211b	63 (2.5")	89 (3.5")	240
EW20211c	63 (2.5")	102 (4")	240



CODE	IN	OUT	LEN
EW20111a	63 (2.5")	79 (3 1/10")	250
EW20111b	63 (2.5")	89 (3.5")	250
EW20111c	63 (2.5")	102 (4")	250



CODE	IN	OUT	LEN
EW20211e	63 (2.5")	76 (3")	240
EW20211f	63 (2.5")	89 (3.5")	240
EW20211g	63 (2.5")	102 (4")	240



CODE	IN	OUT	LEN
EW20213a	63 (2.5")	76 (3")	240
EW20213b	63 (2.5")	89 (3.5")	240
EW20213c	63 (2.5")	102 (4")	240



EW20211h

IN	63 (2.5")
OUT	89 (3.5")
LEN	240



EW20211j

IN	63 (2.5")
OUT	89 (3.5")
LEN	240



CODE	IN	OUT	BODY
YZ401d	63 (2.5")	76 (3")	102 (4")*300
YZ401e	51 (2")	76 (3")	102 (4")*200
YZ451	51 (2")	89 (3.5")	114 (4.5")*300
YZ451a	51 (2")	76 (3")	114 (4.5")*260
YZ451c	51 (2")	89 (3.5")	114 (4.5")*250
YZ451d	63 (2.5")	89 (3.5")	114 (4.5")*300
YZ501	63 (2.5")	102 (4")	127 (5")*300
YZ501a	63 (2.5")	114 (4.5")	127 (5")*300
YZ501b	76 (3")	102 (4")	127 (5")*300
YZ501c	76 (3")	114 (4.5")	127 (5")*300
YZ501h	63 (2.5")	102 (4")	127 (5")*260
YZ501i	51 (2")	102 (4")	127 (5")*300



CODE	IN	OUT	BODY
YZ601	63 (2.5")	102 (4")	152 (6")*350
YZ601a	76 (3")	102 (4")	152 (6")*350
YZ601b	63 (2.5")	114 (4.5")	152 (6")*300
YZ601c	76 (3")	127 (5")	152 (6")*300





Back Pressure Type



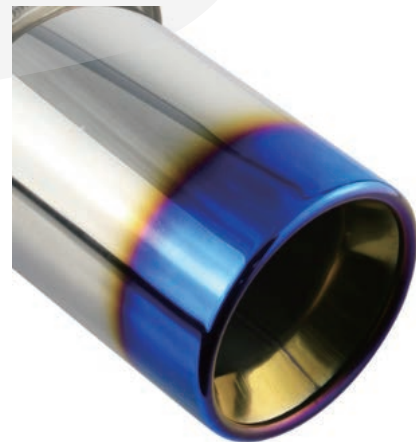
YX521

IN	51 (2")
OUT	102 (4")
BODY	130 (5.2")*300
LEN	500

YX521a

IN	51 (2")
OUT	102 (4")
BODY	130 (5.2")*300
LEN	500

Outlet different



YG451

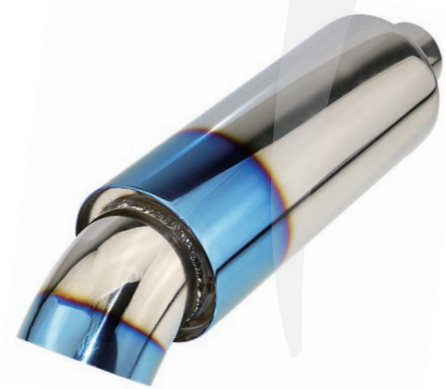
IN	51 (2")
OUT	89(3")
BODY	114 (4.5")*260
LEN	450



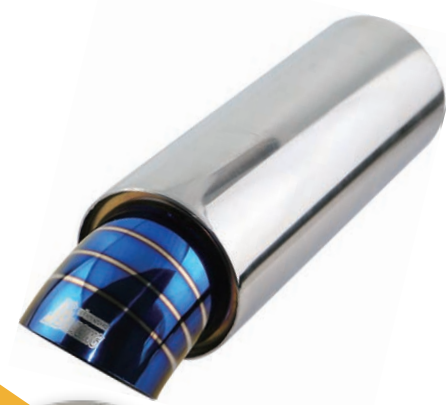
CODE	IN	OUT	BODY
YZ401	51 (2")	76 (3")	102 (4")*250
YZ451b	51 (2")	89 (3.5")	114 (4.5")*300
YZ501f	63 (2.5")	102 (4")	127 (5")*300



CODE	IN	OUT	BODY
YZ401b	51 (2")	76 (3")	102 (4")*250
YZ401g	51 (2")	76 (3")	102 (4")*200



CODE	IN	OUT	BODY
YZ401a	51 (2")	76 (3")	102 (4")*250
YZ401f	51 (2")	76 (3")	102 (4")*200
YZ501g	51 (2")	76 (3")	127 (5")*300
YZ501j	63 (2.5")	76 (3")	127 (5")*300



CODE	IN	OUT	BODY
YZ451e	63 (2.5")	89 (3.5")	114 (4.5")*300
YZ501q	63 (2.5")	102 (4")	127 (5")*300





CODE	IN	OUT	BODY
YZ353	54 (2.2")	76 (3")	89 (3.5")*300
YZ401h	51 (2")	76 (3")	102 (4")*250



CODE	IN	OUT	BODY
YZ401i	63 (2.5")	63 (2.5")	102 (4")*455
YZ401j	51 (2")	76 (3")	102 (4")*250



CODE	IN	OUT	BODY
YZ455	51 (2")	89 (3.5")	114 (4.5")*260
YZ505	63 (2.5")	102 (4")	127 (5")*300
YZ555	76 (3")	114 (4.5")	141 (5.5")*320



CODE	IN	OUT	BODY
YZ503g	63 (2.5")	89 (3.5")	127 (5")*310
YZ603	63 (2.5")	102 (4")	152 (6")*350
YZ603a	76 (3")	102 (4")	152 (6")*350
YZ603c	63 (2.5")	114 (4.5")	152 (6")*350



CODE	IN	OUT	BODY
YZ501d	51 (2")	102 (4")	127 (5")*300
YZ501e	63 (2.5")	102 (4")	127 (5")*300





YZ503d

IN	63 (2.5")
OUT	102 (4")
BODY	127 (5")*300
LEN	530



YZ502b

IN	63 (2.5")
OUT	102 (4")
BODY	127 (5")*355
LEN	550



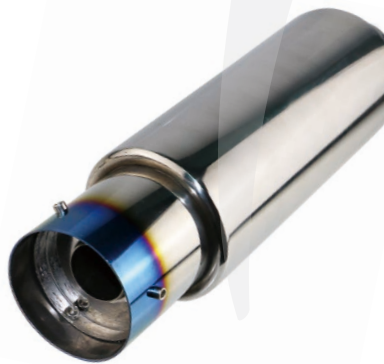
YZ452i

IN	63 (2.5")
OUT	89 (3.5")
BODY	114 (4.5")*300
LEN	450



YZ502a

IN	51 (2")
OUT	102 (4")
BODY	127 (5")*350
LEN	530



YZ502

IN	63 (2.5")
OUT	102 (4")
BODY	127 (5")*260
LEN	450



YZ552

IN	63 (2.5")
OUT	102 (4")
BODY	141 (5.5")*300
LEN	500



YZ452f

IN	51 (2")
OUT	89 (3.5")
BODY	114 (4.5")*260
LEN	450



YZ453

IN	63 (2.5")
OUT	102 (4")
BODY	114 (4.5")*260
LEN	450



YZ503

IN	63 (2.5")
OUT	102 (4")
BODY	127 (5")*320
LEN	530



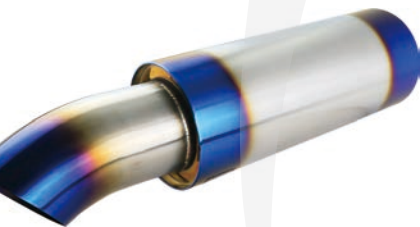
YZ503a

IN	51 (2")
OUT	102 (4")
BODY	127 (5")*320
LEN	550



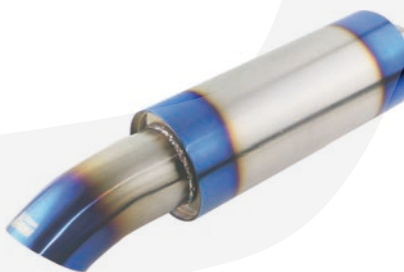
YZ503b

IN	51 (2")
OUT	102 (4")
BODY	127 (5")*320
LEN	550



YZ501o

IN	51 (2")
OUT	89 (3.5")
BODY	127 (5")*320
LEN	550



YZ501p

IN	63 (2.5")
OUT	89 (3.5")
BODY	127 (5")*320
LEN	550

YZ451f

IN	51 (2")
OUT	76 (3")
BODY	114 (4.5")*220
LEN	385



I heard that his products are of good quality and affordable.

whaaaat???





Slant Type

CODE	IN	OUT	BODY
YZ452	51 (2")	102 (4")	114 (4.5")*260
YZ452j	63 (2.5")	102 (4")	114 (4.5")*260



Straight Type

YZ452h	51 (2")	102 (4")	114 (4.5")*260
--------	---------	----------	----------------



YZ452b

IN	51 (2")
OUT	76 (3")
BODY	114 (4.5")*260
LEN	450



YZ452c

IN	51 (2")
OUT	76 (3")
BODY	114 (4.5")*260
LEN	450



YZ452d

IN	51 (2")
OUT	89 (3.5")
BODY	114 (4.5")*260
LEN	450



YZ452a

IN	51 (2")
OUT	76 (3")
BODY	114 (4.5")*260
LEN	450





YZ501l

IN	51 (2")
OUT	102 (4")
BODY	127 (5")*300
LEN	500



YZ501n

IN	51 (2")
OUT	102 (4")
BODY	127 (5")*300
LEN	450



YZ401c

IN	51 (2")
OUT	89 (3.5")
BODY	102 (4")*300
LEN	500



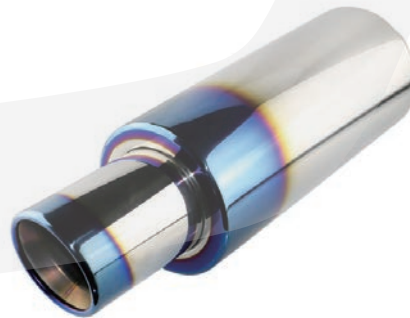
YZ553

IN	63 (2.5")
OUT	102 (4")
BODY	141 (5.5")*300
LEN	500



YZ503f

IN	63 (2.5")
OUT	102 (4")
BODY	127 (5")*300
LEN	500



YZ603b

IN	63 (2.5")
OUT	102 (4")
BODY	152 (6")*350
LEN	550



YZ673

IN	63 (2.5")
OUT	114 (4.5")
BODY	168 (6.7")*350
LEN	580



YZ673a

IN	63 (2.5")
OUT	102 (4")
BODY	168 (6.7")*350
LEN	580



YZ452e

IN	51 (2")
OUT	138*76 (6.5"*3")
BODY	114 (4.5")*300
LEN	550



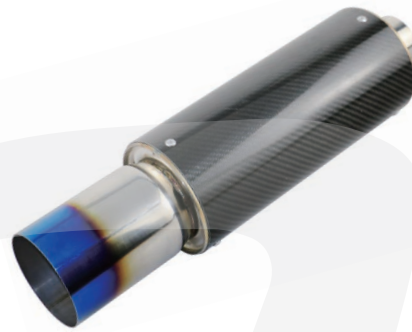


CODE	IN	OUT	BODY
SZ802	51 (2")	89 (3")	200 (8")*300
SZ802a	63 (2.5")	89 (3")	200 (8")*300
SZ802b	51 (2")	89 (3")	152 (6")*240



YZ503c

IN	63 (2.5")
OUT	102 (4")
BODY	127 (5")*300
LEN	500



YZ501k

IN	63 (2.5")
OUT	102 (4")
BODY	127 (5")*300
LEN	500



YZ501m

IN	63 (2.5")
OUT	102 (4")
BODY	127 (5")*300
LEN	500



TZ401

IN	63 (2.5")
OUT	102 (4")
BODY	102 (4")
LEN	513



BZ80503

IN	63 (2.5")
OUT	138*76 (5.5"*3")
BODY	200*130 (8"*5")
LEN	550



BZ80503a

IN	63 (2.5")
OUT	89 (3.5")
BODY	200*130 (8"*5")
LEN	550*530



BZ80503b

IN	63 (2.5")
OUT	76 (3")
BODY	200*130 (8"*5")
LEN	550



BZ80503c

IN 63 (2.5")

OUT 76 (3")

BODY 200*130 (8"*5")

LEN 520*500



BZ80503d

IN 63 (2.5")

OUT 76 (3")

BODY 200*130 (8"*5")

LEN 520

BZ80503e

IN 63 (2.5")

OUT 76 (3")

BODY 200*130 (8"*5")

LEN 550



BZ80503f

IN	63 (2.5")
OUT	138*76 (5.5"*3")
BODY	200*130 (8"*5")
LEN	550



BZ80503g

IN	63 (2.5")
OUT	138*76 (5.5"*3")
BODY	200*130 (8"*5")
LEN	550



BZ80503h

IN	63 (2.5")
OUT	76 (3")
BODY	200*130 (8"*5")
LEN	520*500



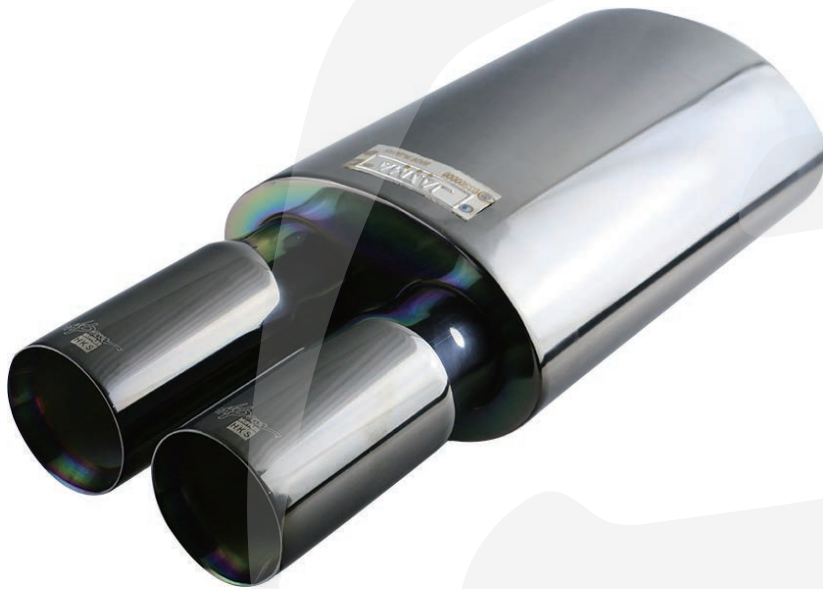
BZ80503i

IN 63 (2.5")

OUT 115*85 (4.5"*3²/₅"

BODY 200*130 (8"*5")

LEN 520



BZ80503j

IN 63 (2.5")

OUT 76 (3")

BODY 200*130 (8"*5")

LEN 520



CODE	IN	OUT	BODY	LEN
BZ60403	63(2.5")	75*105	102*150(4"*6")	425
BZ60403a	76(3")	75*105	102*150(4"*6")	425



BZ55301

IN	51 (2")
OUT	75*140
BODY	75*140(3"*5.5")
LEN	390



BZ60403b

IN	63 (2.5")
OUT	75*105
BODY	102*150(4"*6")
LEN	425



BZ60403c

IN	57 (2 1/8")
OUT	63 (2.5")
BODY	102*150(4"*6")
LEN	395



BZ80502

IN	63 (2.5")
OUT	135*70
BODY	200*130(8"*5")
LEN	550



BZ80502b

IN	63 (2.5")
OUT	89 (3.5")
BODY	200*130(8"*5")
LEN	550*530



BZ80502c

IN	51 (2")
OUT	51 (2")
BODY	200*130(8"*5")
LEN	550





BZ80506

IN	63 (2.5")
OUT	76 (3")
BODY	200*130(8"*5")
LEN	580*560



BZ85606a

IN	63 (2.5")
OUT	102 (4")
BODY	213*153(8.5"*6")
LEN	500



BZ85606b

IN	63 (2.5")
OUT	102 (4")
BODY	213*153(8.5"*6")
LEN	500



BZ85606c

IN	63 (2.5")
OUT	89 (3.5")
BODY	213*153(8.5"*6")
LEN	570



BZ85606d

IN	63 (2.5")
OUT	102 (4")
BODY	213*153(8.5"*6")
LEN	570





VAV01

VAV03

CODE	IN	OUT	BODY	LEN
BX80506	63 (2.5")	63 (2.5")	215*152 (8.5"*6")	660
BX80506a	76 (3")	76 (3")	215*152 (8.5"*6")	660



BX90553a

IN	76 (3")
OUT	76 (3")
BODY	215*152(8.5"*6")
LEN	690



BZ85606

IN	63 (2.5")
OUT	89 (3.5")
BODY	213*153(8.5"*6")
LEN	500



BZ90403b

IN	63 (2.5")
OUT	102 (4")
BODY	230*102(9"*4")
LEN	580



BZ110701

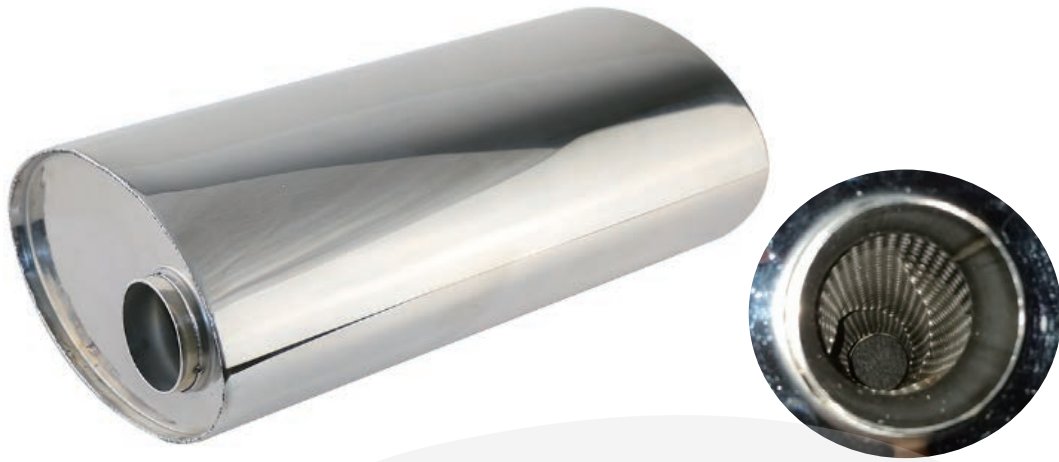
IN	63 (2.5")
OUT	89 (3.5")
BODY	275*170(11"*7")
LEN	550



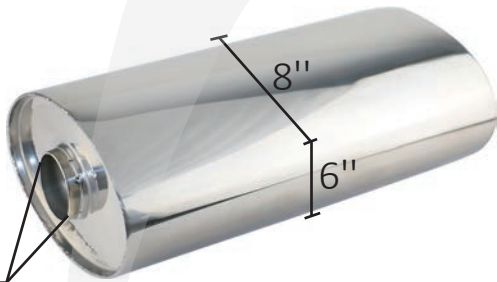
BZ110701a

IN	63 (2.5")
OUT	89 (3.5") Rolled
BODY	275*170(11"*7")
LEN	550



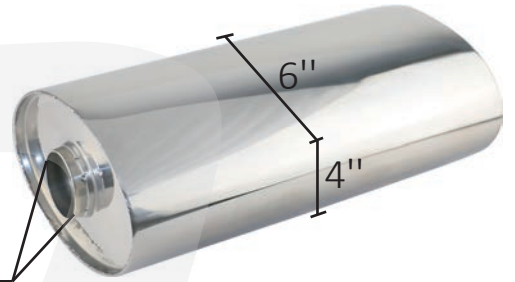


51 (2")
63 (2.5")
76 (3")

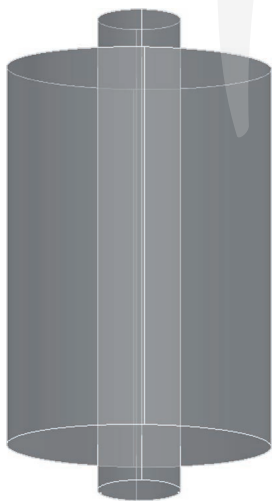


BL80501

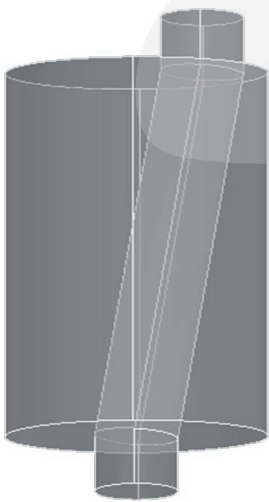
51 (2")
63 (2.5")
76 (3")



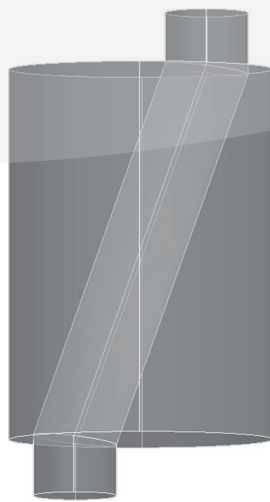
BL60401



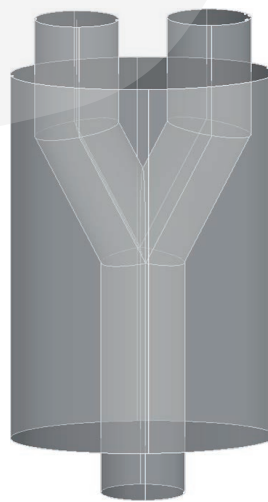
a



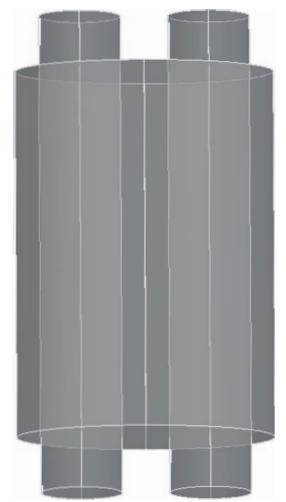
b



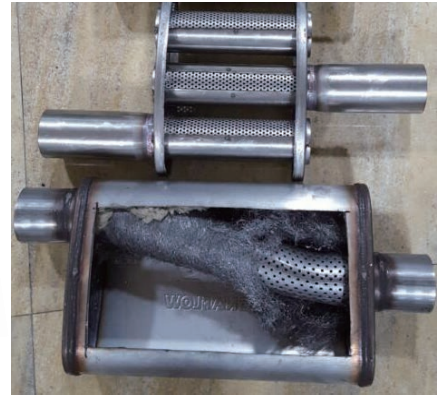
c



d



e



CODE	IN	OUT	BODY	LEN
BZ90401	63 (2.5")	63 (2.5")	230*105 (9"*4")	500
BZ90401a	76 (3")	76 (3")	230*105 (9"*4")	500



IN	63 (2.25")
OUT	63 (2.25")
BODY	230*105(9"*4")
LEN	500



CODE	IN	OUT	BODY	LEN
BZ90403	63 (2.5")	63 (2.5")	230*105 (9"*4") L:400	500
BZ90403a	63 (2.5")	63 (2.5")	230*105 (9"*4") L:200	500





CODE	IN	OUT	BODY	LEN
BZ65453	51(2")	51(2")	114*160(4.5"*6.5")	130
BZ65453a	63(2.5")	63(2.5")	114*160(4.5"*6.5")	210





CODE	IN	OUT	BODY
ZZ401	51 (2")	51 (2")	102 (4")*300
ZZ401a	51 (2")	51 (2")	102 (4")*200
ZZ401b	51 (2")	51 (2")	102 (4")*350
ZZ401c	63 (2.5")	63 (2.5")	102 (4")*110
ZZ401d	63 (2.5")	63 (2.5")	102 (4")*160
ZZ401e	63 (2.5")	63 (2.5")	102 (4")*300
ZZ451	51 (2")	51 (2")	114 (4.5")*300
ZZ451a	63 (2.5")	63 (2.5")	114 (4.5")*300
ZZ451b	76 (3")	76 (3")	114 (4.5")*300
ZZ501	76 (3")	76 (3")	127 (5")*300
ZZ501a	63 (2.5")	63 (2.5")	127 (5")*300



CODE	IN	OUT	BODY
ZZ407	63 (2.5")	63 (2.5")	102 (4")*480
ZZ407a	63 (2.5")	63 (2.5")	102 (4")*325
ZZ407b	51 (2")	51 (2")	102 (4")*275
ZZ407c	63 (2.5")	63 (2.5")	102 (4")*275





ZL401

IN	63 (2.5")
OUT	63 (2.5")
BODY	102 (4")*300
LEN	400 (16")



ZL402

IN	58 (2.25")
OUT	58 (2.25")
BODY	102 (4")*300
LEN	400 (16")



ZL407

IN	51 (2")
OUT	51 (2")
BODY	102 (4")*200
LEN	400 (16")



ZL407a

IN	51 (2")
OUT	51 (2")
BODY	102 (4")*250
LEN	450 (18")



Mercedes-Benz Catalytic Converter

G01F0007
GLA 250 2014



Mercedes-Benz Catalytic Converter

G01F0009
C292 GLE Coupe 2015



Mercedes-Benz Catalytic Converter

G01F0010
ML400 \GLE400\GL450



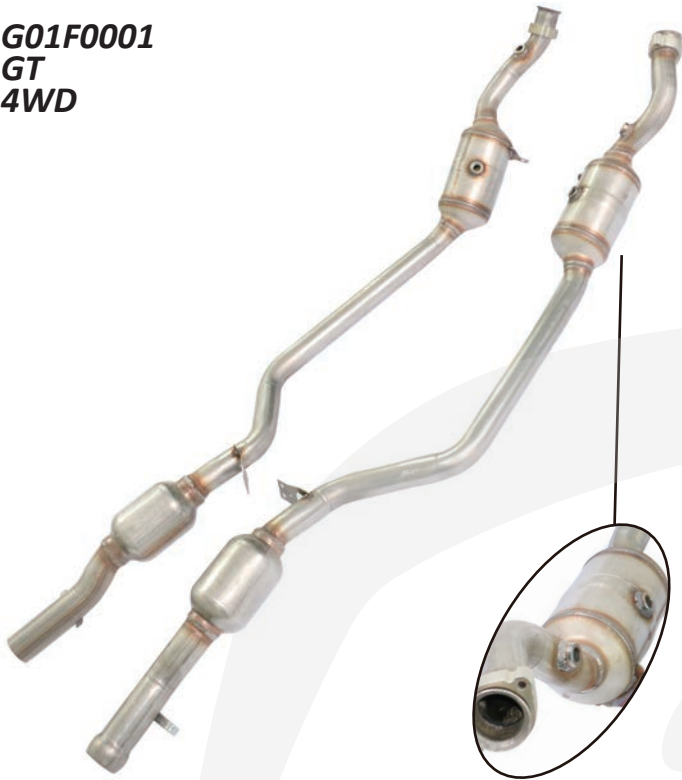
Mercedes-Benz Catalytic Converter

G01F0003
X204 GLK 2012-2015 M276



Mercedes-Benz Catalytic Converter

G01F0001
GT
4WD



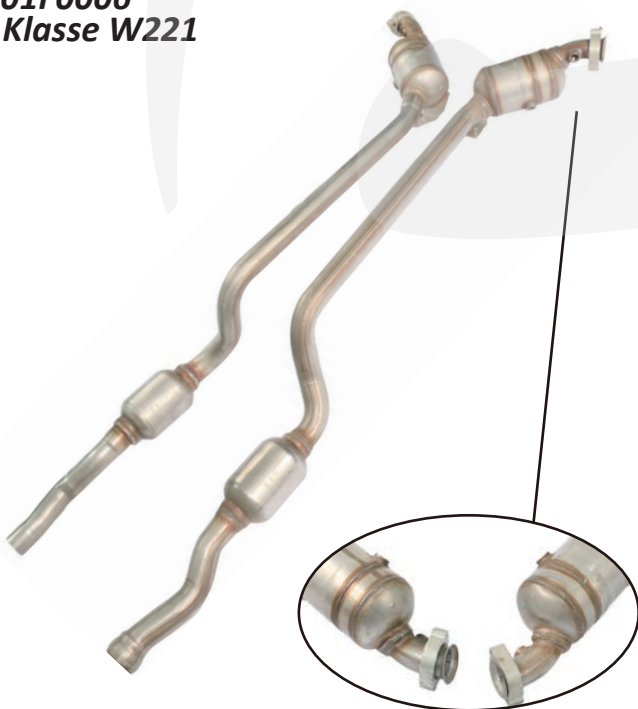
Mercedes-Benz Catalytic Converter

G01F0008
W204 C250 2012-2015



Mercedes-Benz Catalytic Converter

G01F0006
S Klasse W221



Mercedes-Benz Catalytic Converter

G01F0015
Viano



Mercedes-Benz Catalytic Converter

G01F0011
w164 ML350 (m272)



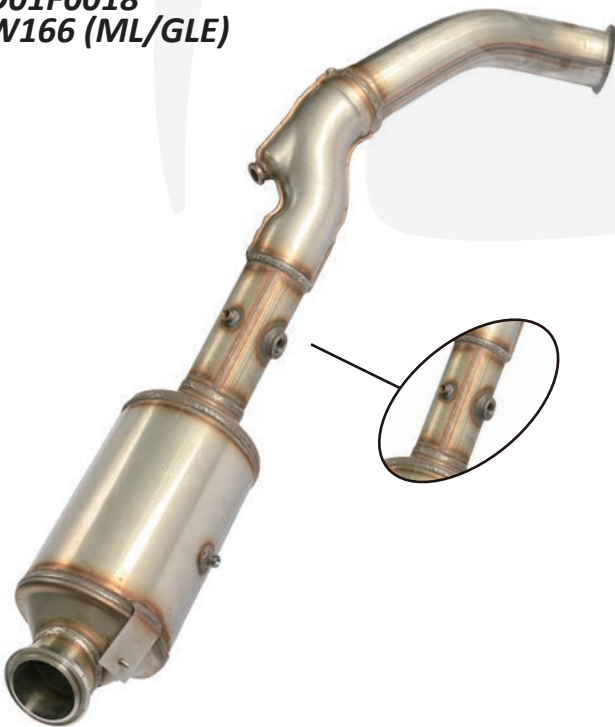
Mercedes-Benz Catalytic Converter

D01F0016
ML320 350 GL320 350



Mercedes-Benz Catalytic Converter

D01F0018
W166 (ML/GLE)



Mercedes-Benz Catalytic Converter

D01F0017
W166 GLE 2015-201



Mercedes-Benz Catalytic Converter

G01F0002
S-class W221



Mercedes-Benz Catalytic Converter

G01F0005
W221 S



Mercedes-Benz Catalytic Converter

G01F0013
R-CLASS (W251, V251) (2005-)2012



Mercedes-Benz Catalytic Converter

G01F0014
R500 251 Chassis



Mercedes-Benz Catalytic Converter

G01F0004
E Class W212 2011



Mercedes-Benz Catalytic Converter

G01F0012
GL X164 2011



Mercedes-Benz Catalytic Converter

D01F0019
Sprinter 2.1L Diesel Particulate Filter
2009



Mercedes-Benz Exhaust Tips

010001
Brabus



BMW Catalytic Converter

G02F0017
5-Series (F10)
528i 2009-2016



BMW Catalytic Converter

G02F0021
1-Series (F20)
N13B16A 116i (2011-)



BMW Catalytic Converter

G02F0022
28iX



BMW Catalytic Converter

G02F0023
1-Series (F20)



BMW Catalytic Converter

G02F0024
F20 F21 M135i F22 F23 M235i



BMW Catalytic Converter

G02F0020
3-Series 330i 2.0 16V
B48 B20B 2014-09 / 2019



BMW Catalytic Converter

G02F0030
E60 530i 525i



BMW Catalytic Converter

G02F0032
5-Series, F10



BMW Catalytic Converter

G02F0033
5-Series, F10



BMW Catalytic Converter

G02F0029
F10 550i
F01 7er 750i



BMW Catalytic Converter

G02F0026
Rolls-Royce Ghost Wraith 6.6 V12
760Li. Cylinders 7-12. 6.0L turbo
cylinder 7 to 12



BMW Catalytic Converter

G02F0019
F20 F22 F30 F32 1 2 3 4 series



BMW Catalytic Converter

G02F0027
MINI



BMW Catalytic Converter

G02F0018
X4. X3. X1. Sdrive. 2.0L gas. 28i series



BMW Catalytic Converter

G02F0025
5,7 hybrid 740Li



BMW Catalytic Converter

G02F0031
328i Exhaust Manifold
2007



BMW Catalytic Converter

G02F0028
135i series E88/E82
335i series E90/E92/E93



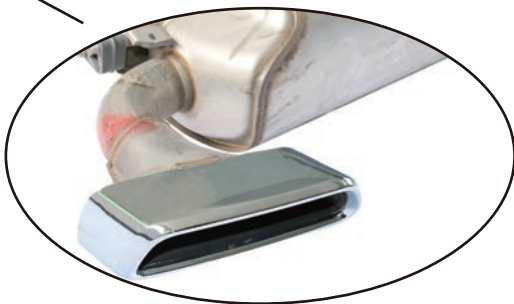
BMW downpipe

G02F0015
F30 320i (B48) factory stock downpipe



BMW rear muffler

G02R0016
530i 530iX W/M SPORT



BMW rear muffler

G02R0013
X1
Modified into 2 Outlets



BMW rear muffler

G02R0014
X5 2013 X6 F16 2014
Modified into ///M



BMW muffler

5 Series
(Modification)



BMW muffler

740i, 740li, 740Li xDrive



BMW Exhaust tips

020003
5 Series
F10 535i /535i xDrive 3.0L
F11 F18 550i 560i



BMW Exhaust tips

020005
7 Series
740i F01 4 Door
750



BMW Exhaust tips

020002
X1



Land Rover Catalytic Converter

G04F0001
LR4. 3.0L V6 - Gas



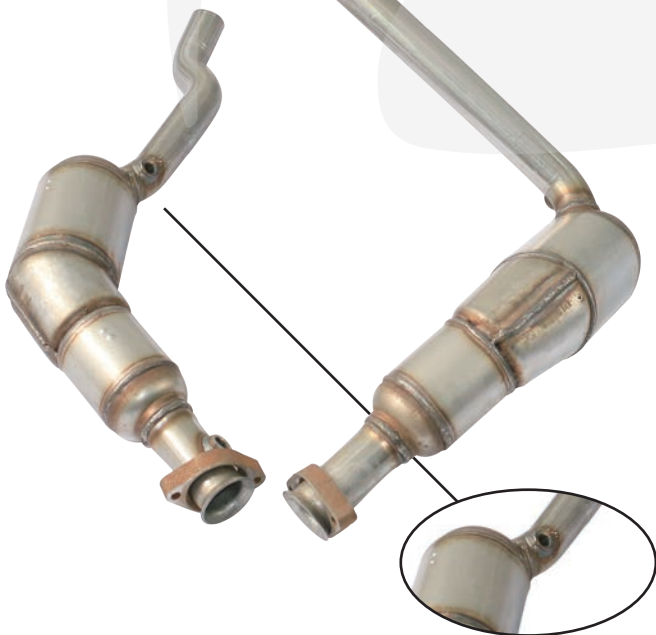
Land Rover Catalytic Converter

G04F0002
LR3 2007 SE 4.0L V6



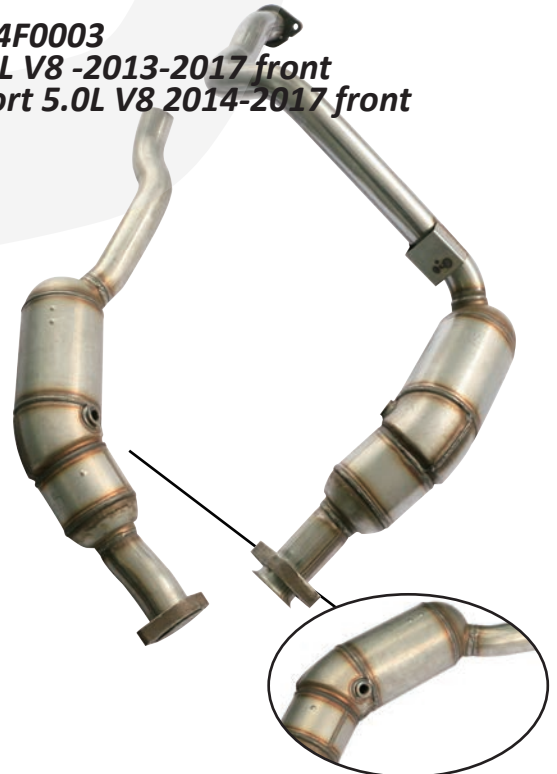
Discovery Catalytic Converter

G04F0004
LR3 4.4l V8 2006-2007
sport 4.4l V8 2005-2008



Range Rover Catalytic Converter

G04F0003
5.0L V8 -2013-2017 front
Sport 5.0L V8 2014-2017 front



Range Rover Catalytic Converter

G04F0008
5.0L V8 - Gas (2010-2012)



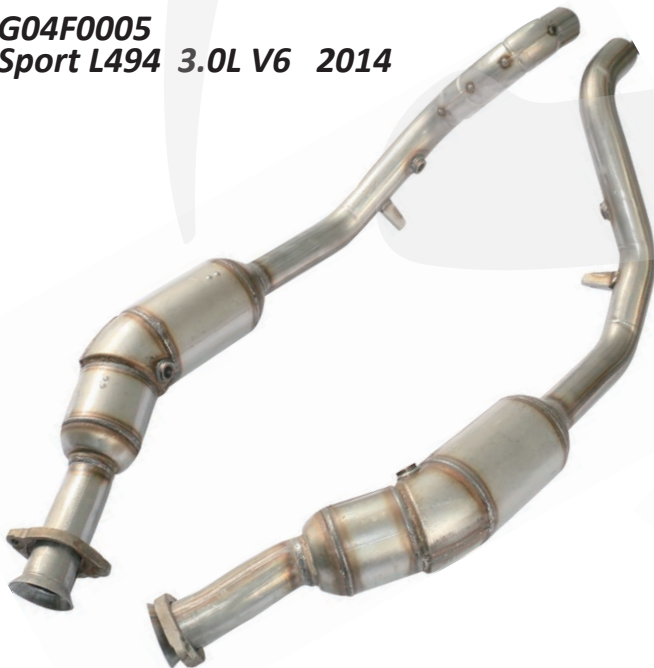
Range Rover Catalytic Converter

G04F0007
5.0t
(US)



Range Rover Catalytic Converter

G04F0005
Sport L494 3.0L V6 2014



Discovery Catalytic Converter

G04F0006
Sport 2.0L L4
LR2 HSE 2.0L L4 - Gas
Evoque 2.0L L4



Range Rover Catalytic Converter

D04F0009
Vogue 3.0L
Diesel Oil



Range Rover Catalytic Converter

D04F0010
Diesel Oil



Range Rover Exhaust Tips

040006
(2017)



Toyota Catalytic Converter

G05F0025
Toyota LAND CRUISER Prado 150 2TR SA
STTY150998B0,
Toyota 4 Runner, TRN280, TRN285,
Toyota LAND CRUISER Prado,
TRJ150, TRJ150L, TRJ150W



Toyota Catalytic Convert

G05F0026
Highlander (2009-2013)



Toyota Catalytic Converter

G05F0028
Camry (2007-2011)



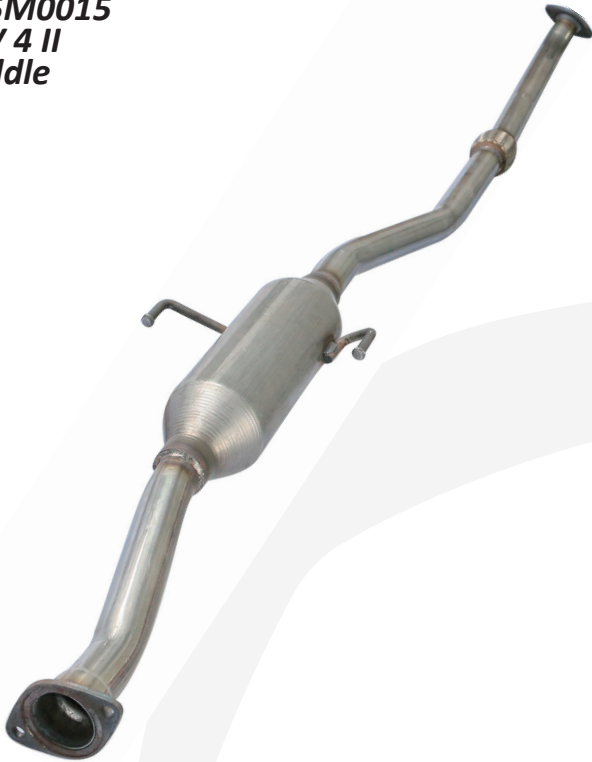
Toyota Catalytic Converter

G05F0027
Lexus Lx470 (2004)
LAND CRUISER



Toyota Center Muffler

G05M0015
RAV 4 II
Middle



Toyota Center Muffler

G05M0016
US Camry



Toyota(GAC) Rear muffler

Highlander 2.0t



Toyota Middle Silencer

G05M0012
RAV 4 (2008)



Toyota Middle Silencer

G05M0014
RAV 4 2.5L (2013-2017)



Toyota Center Muffler

G05M0013
RAV 4 III (2012)



Toyota Center Muffler

G05M0009
LAND CRUISER Prado
TRJ150W, TRJ150, TRJ150L,
2TRFE TRJ150, TRJ150L, TRJ150W



Toyota Center Muffler

G05M0010
LAND CRUISER Prado
1GRFE 4000CC 24-VALVE DOHC EFI



Toyota Center Muffler

G05M0006
LAND CRUISER 100
1HDT 4200CC DIESEL TURBO
1HDFTE 4200CC DIESEL TURBO



Toyota Center Muffler

G05M0005
LAND CRUISER 4700CC 32-VALVE DOHC EFI
UZJ200-2UZFE



Toyota Center Muffler

G05M0011
LAND CRUISER KDJ120



Toyota Center Muffler

G05M0007
LAND CRUISER 4700



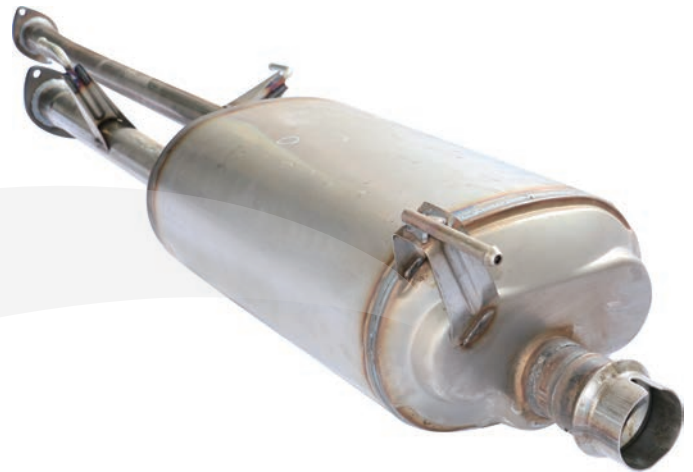
Toyota Center Muffler

G05M0001
Sequoia (2018-2019)



Toyota Center Muffler

G05M0008
Tundra (2015)



Toyota Center Muffler

G05M0003
Lexus LX450d, URJ201, VDJ201, LX460,
URJ201, VDJ201, LX570, URJ201,
URJ201W, VDJ201,
LAND CRUISER, URJ200, URJ202, URJ202W,
VDJ200,



Toyota Center Muffler

G05M0004
Lexus LX450d, VDJ201
Lexus LX460, VDJ201
Lexus LX570, VDJ201
Toyota LAND CRUISER, 1VDFTV- VDJ200



Toyota Rear muffler

G05R0002
Camry (2007-2011)



Toyota Rear Muffler

G05R0023
RAV 4



Toyota Rear Muffler

G05R0022
RAV 4, ACA33, ACA38
Vanguard, ACA33, ACA33W, ACA38, ACA38W
(2AZFE)



Toyota Rear Muffler

G05R0024
RAV 4, ASA42, ASA44, ASA42W
(2013)



Toyota Rear Muffler

G05R0019
GR LAND CRUISER Prado
1GRFE 4000CC 24-VALVE DOHC EFI GRJ120
(2002-2010)



Toyota Rear Muffler

G05R0020
LAND CRUISER(2007)
2UZFE 4700CC 32-VALVE DOHC EFI
1GRFE 4000CC 24-VALVE DOHC EFI GRJ200



Toyota Rear muffler

G05R0021
LAND CRUISER 100
Lexus LX470



Toyota End Pipe

G05R0018
Genuine LAND CRUISER 120 4.0



Toyota *End Pipe*

G05R0017
Tundra (2015)



Audi **Catalytic Converter**

G03F0001
Audi S3



Audi **Catalytic Converter**

G06F0003
Audi A3
Seat Leon
Skoda Octavia III
VW Golf VII



Audi **Catalytic Converter**

G06F0005
AUDI A3 1.4t



Audi **Exhaust Tip**

030004
A6L
(2016-2018)



Volkswagen Catalytic Converter

G06F0001
VW GOL



Volkswagen Catalytic Converter

G06F0002
VW LAVIDA 1.6



Volkswagen Catalytic Converter

G06F0004
Passat B8 Variant (2015)
VW Golf 7



Volkswagen Catalytic Converter

G06F0003
GOLF VII 5G1, BE1, BE2, BQ1, BA5
Audi A3
Seat Leon 5F1, 5F, 5F8
Skoda Octavia III 5E3, 5E5



Volkswagen Catalytic Converter

G06F0005
Sagitar 1.4t
AUDI A3 1.4t



Volkswagen Catalytic Converter

G06F0006
Tiguan L



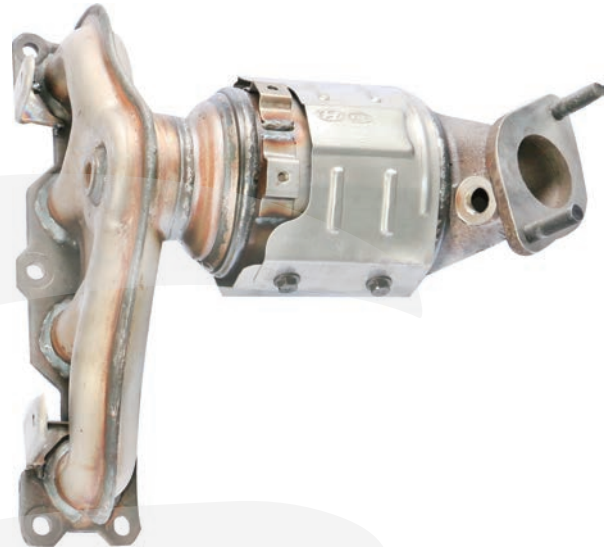
HYUNDAI Catalytic Converter

G10F0008
Kia Sorento/ Hyundai Santa Fe



HYUNDAI Catalytic Converter

G10F0007
Santa Fe & KIA Sorento



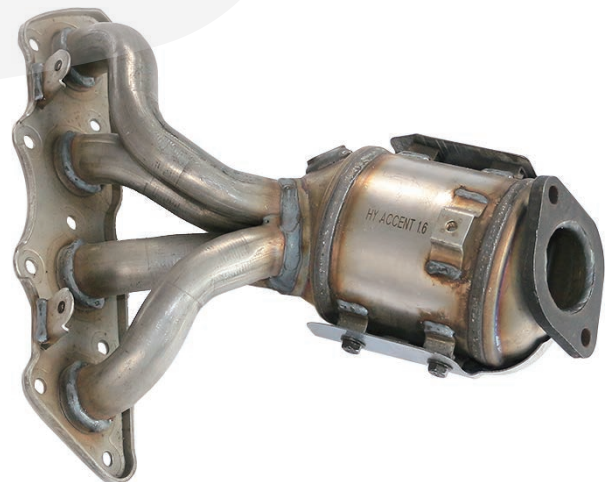
HYUNDAI Catalytic Converter

G10F0003
Hyundai IX35



HYUNDAI Catalytic Converter

G10F0004
Hyundai IX25



HYUNDAI Rear Muffler

G10R0001
Hyundai Tucson



HYUNDAI Rear Muffler

G10R0002
Hyundai IX35



Honda Catalytic Converter

G07F0005
Chevrolet Aveo 1.6



Honda Catalytic Converter

G07F0004
Chevrolet Optra 1.8



Honda Catalytic Converter

G07F0006
Chevrolet Sail 1.4



Honda Catalytic Converter

G07F0007
Chevrolet Cruze



Chevrolet Centre Silencer

G07M0002
Chevrolet Aveo body



Chevrolet Centre Silencer

G07M0003
Chevrolet Sail body



Chevrolet Centre Silencer

G07M0008
CAPTIVA 2.0D SUV



Chevrolet Rear Muffler

G07R0001
Chevrolet Aveo muffler



Ford Catalytic Converter

G09F0002
Mondeo 1.6T



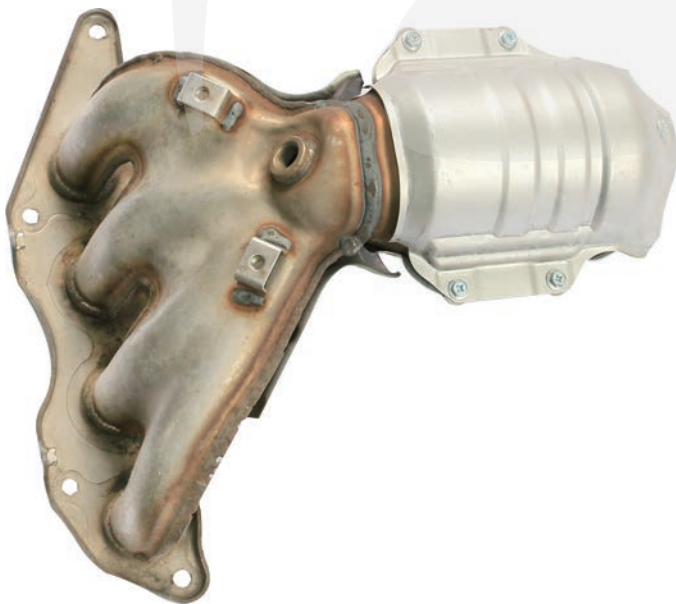
Buick Centre Silencer

G09F0001
Buick LaCrosse



MITSUBISHI Catalytic Converter

G13F0001
Galant



Honda End Pipe

G15F0001
CIVIC SEDAN \ COUPE
(2016-2019)



SUZUKI Centre Silencer

G12R0001
Suzuki Vitara 2.4



KIA Rear muffler

G11R0001
kia sportage



KIA Rear muffler

G11R0002
kia sportage \Hyundai Tucson



Daewoo Rear muffler

G14R0001
Daewoo Nexia (1995-1997)
Daewoo Cielo (1994-1998)



LANDWIND *Rear muffler*

G17R0001
Fashion

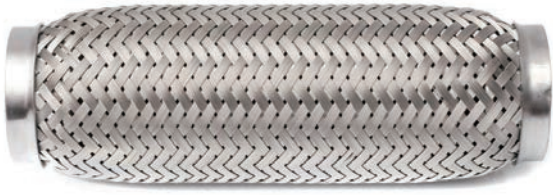


Dongfeng *Rear muffler*

G16R0001
Joyear



Flexible pipe



Tri Flange



Oval Flange



Donut Flange



Muffler Hanger



Basalt Fiber Exhaust Wrap



X-Pipe & Y-Pipe



Elbows





Clamp



T-Clamp



U-Clamp



O-Clamp



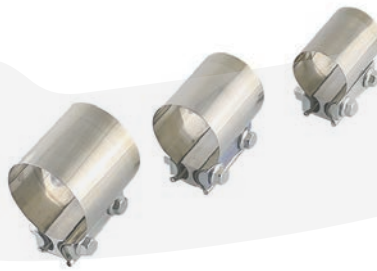
V-Clamp



M-Clamp



P-Clamp



P-Clamp



Before installing



After Installing



45° with catalytic



SS03-6

90° with catalytic



SS03-7

180°

with catalytic



SS04

SS05

without catalytic



SS01

SS02

bung and plug fitting



SS08

SS09

SS10

SS11

sensor adapter with catalytic



SS12

SS12+SS07

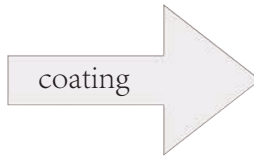
45°

90°

180°

matel catalytic ✓

ceremic catalytic ✗



Empty Catalytic

Precious metal coated

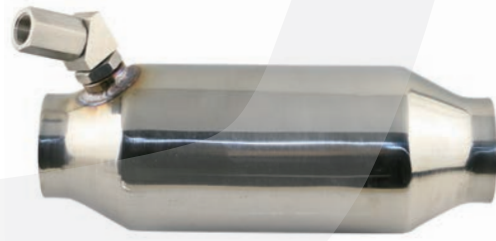
We can make Euro 2,3,4,5 and mesh 200cpsi,300cpsi,400cpsi,as you wish



CODE	IN	OUT	BODY	LEN	
MC02	63(2.5")	63(2.5")	102(4")	260	Euro 2
MC03	63(2.5")	63(2.5")	102(4")	260	Euro 3
MC05	63(2.5")	63(2.5")	102(4")	260	Euro 5

MC03 nut

IN	63 (2.5")
OUT	63 (2.5")
BODY	102(4")
LEN	270



Ceramic catalytic

UC01

IN	68 (2 3/8")
OUT	68 (2 3/8")
BODY	114*130(4.5"*5")
LEN	376



Ceramic catalytic

OUC01

IN	82 (3 1/8")
OUT	82 (3 1/8")
BODY	162*100
LEN	400



Ceramic catalytic

UC02

IN	54 (2 1/10")
OUT	54 (2 1/10")
BODY	114*130(4.5"*5")
LEN	376



Ceramic catalytic

UC03

IN	54 (2 1/10")
OUT	54 (2 1/10")
BODY	104*130(4"*5")
LEN	354

VAV01



VAV02



VAV03



VAV04



VAV05



VAV06



VAV07

