



2017-2018 RAILING SYSTEM

2017-2018 RAILING SYSTEM

TOP GOOD INDUSTRIAL&TRADING CO. LTD

TEL: 86-532-81925163

FAX: 86-532-81925363

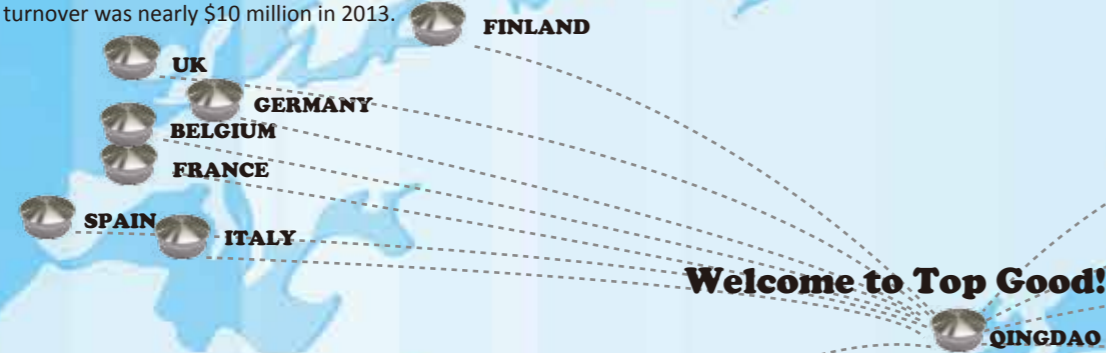
E-MAL: sales@chinatopgood.com SKYPE: [victoria_chinatopgood](https://www.skype.com/name/victoria_chinatopgood) WEB SITE:www.chinatopgood.com PC:266034

ADD: Room 2320, Tower 3, Excellence century center, No.31 LongCheng Road, Shibe District.QINGDAO.CHINA

Top Good is a specialized manufacturing & trading company, which can provide the wide range of handrail system fittings and glass hardwares as per the customer's requests. Top Good always sticks to high quality in both products and service during the past 10 years since establishing in year 2003. With our good reputation, items from Top Good have been spread to Europe, Australia, America and Africa.

Our main products include stair handrail, handrail balustrade, handrail fittings & hardware, balcony and swimming pool handrail and fittings, fence post, stainless steel tubes and others like wrought iron components, more than 100 series, over 1000 articles.

Top Good sales turnover was nearly \$10 million in 2013.



Top Good has 10 years export experience and we have built the professional team with sales dept. and technical section. We also have built our office/workshop in North & South China.

Top Good specially set up an advanced and high efficient Internal ERP management system to control our business from the beginning to the end.

Top Good is qualified the standard of ISO9000 quality system, and is applying for the certificate to improve our quality management level.

Top Good can provide the following service:

- ★ Products design & development
- ★ Door to Door Logistics management
- ★ Certain period free storage of inventory and partial shipment
- ★ Offer QCDS service:
 - Q – Stable & reliable quality control system
 - C – Competitive cost
 - D – Delivery in time
 - S – After service
- ★ Sourcing other products according to the customer's requests

Our principle: Promised, we'll make every word come true. Non-promised, we'll show you action directly. We'll always keep to our principle and take everything seriously from new and old customers.

Simply and rapidly installed, succinctly and exquisitely finished. Top Good brings high grade of details to life. Here shows you a perfect Top Good

Top Good ist ein auf Entwicklung, Herstellung und Handel spezialisiertes Unternehmen das seinen Kunden eine große Bandbreite an kundenspezifischen Lösungen zu Haltesystemen für Glasscheiben und Geländer bietet. Top Good achtet dabei seit der Gründung 2003 vor 10 Jahren immer auf höchste Qualität sowohl der Produkte und des Service. Durch unseren guten Ruf werden Produkte von Top Good mittlerweile in Europa, Australien, Amerika und Afrika eingesetzt.

Unsere Hauptprodukte bestehen aus Treppengeländern, Geländern für Balustraden, Balkone und Swimming Pools, Haltesysteme für Geländer, Zaunpfähle, Edelstahlrohre und andere veredelte Eisenprodukte - mehr als 100 Serien und 1000 Produkte. Top Goods Umsatz betrug 2013 fast 10 Millionen US-Dollar

Top Good besitzt 10 Jahre Exporterfahrung aus China - ein professionelles Team aus Vertrieblern und Technikern unterstützt Sie bei allen Fragen zu unseren Produkten. In Nord- und Südchina befinden sich unsere Büros, Lager und Werkstätten.

Die komplette Prozesskette von Top Good wird intern mit einem effizienten ERP Management System abgewickelt. Top Good ist bereits nach dem ISO9000 Qualitätssystem qualifiziert und durchläuft momentan eine weitere Zertifizierung des Qualitätsmanagements.

Top Good bietet Ihnen:

- ★ Produktentwurf & Entwicklung & Verbesserungen
- ★ Door-to-Door Logistikmanagement
- ★ Im Zeitabschnitt Freie Lagerung Ihres Inventars und teilweise Lieferung
- ★ Wir bieten Ihnen QKAN Service:
 - Q – Stabiler & verlässliches Qualitätskontrollsystem
 - K – Konkurrenzfähige Kosten
 - A – Inzeit Anlieferung
 - N – Nachbetreuung
- ★ Alle anderen Produkten beschaffen wir je nach den Wünschen unserer Kunden.

Unser Prinzip: Wir versprechen dass wir Wort halten. Wir sprechen mit Ihnen jede Aktion direkt ab. Wir stehen zu unseren Prinzipien und bedienen die Wünsche unserer bestehenden und neuen Kunden immer zu 100%.

Einfach und schnell installiert, prägnantes und exquisites Finish. Top Good liefert Ihnen beste Qualität und wunderschöne Details. Das ist Top Good!





TOP GOOD 2017-2018 RAILING SYSTEM



GLASS SYSTEM.....	01
CHANNEL TUBE SYSTEM.....	13
SQUARE HANDRAIL SYSTEM.....	21
CABLE WIRE SYSTEM.....	31
RAILING ORNAMENTAL BAR.....	39
RAILING POST.....	43
TUBE & BAR.....	51
BAR HOLDER.....	53
END CAP & BALL.....	59
HANDRAIL SUPPORT.....	69
TUBE CONNECTOR.....	83
PLATE/MOUNTING BRACKET/BASE COVER.....	89
GATE HINGE/LOCK & HANDLE.....	97

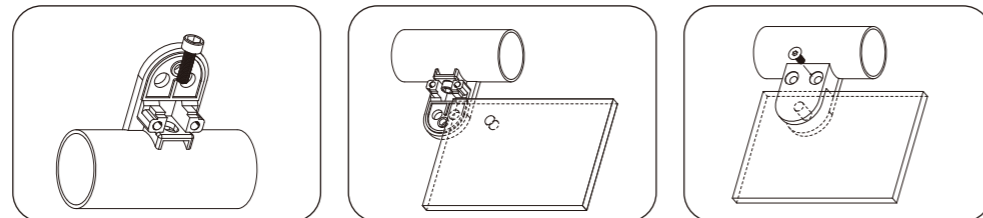


Materials: STEEL/AISI304/AISI316/ZINC
 Surface: raw/satin/mirror/plating

GLASS SYSTEM



Installation Diagram



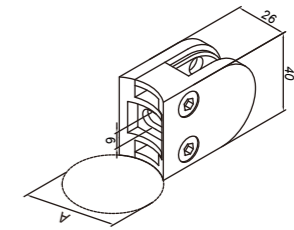
ARTICLE NO.80000

"D" Glass Clamp



Spec(mm)	A(mm)	Glass (mm)
40x50x26	Flat	6-10
40x50x26	33.7	6-10
40x50x26	38.1	6-10
40x50x26	42.4	6-10
40x50x26	48.3	6-10

Materials: AISI304/AISI316
 Materials: ZINC
 Surface: satin/mirror
 Surface: raw/plating



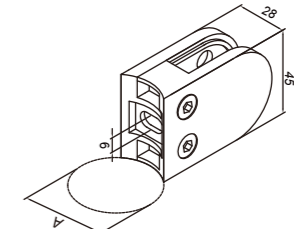
ARTICLE NO.80010

"D" Glass Clamp



Spec(mm)	A(mm)	Glass (mm)
45x63x28	Flat	8-10.76
45x63x28	33.7	8-10.76
45x63x28	38.1	8-10.76
45x63x28	42.4	8-10.76
45x63x28	48.3	8-10.76
45x63x28	50.8	8-10.76

Materials: AISI304/AISI316
 Materials: ZINC
 Surface: satin/mirror
 Surface: raw/plating



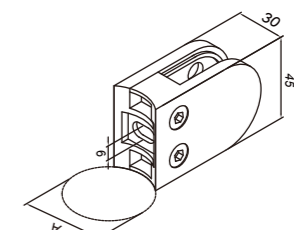
ARTICLE NO.80020

"D" Glass Clamp



Spec(mm)	A(mm)	Glass (mm)
45x63x30	Flat	8-12.76
45x63x30	33.7	8-12.76
45x63x30	38.1	8-12.76
45x63x30	42.4	8-12.76
45x63x30	48.3	8-12.76
45x63x30	50.8	8-12.76

Materials: AISI304/AISI316
 Materials: ZINC
 Surface: satin/mirror
 Surface: raw/plating



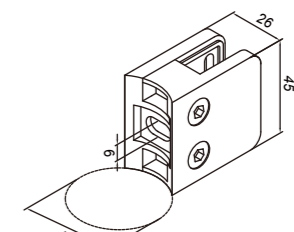
ARTICLE NO.80100

Square Glass Clamp



Spec(mm)	A(mm)	Glass (mm)
45x45x26	Flat	6-10.76
45x45x26	33.7	6-10.76
45x45x26	38.1	6-10.76
45x45x26	42.4	6-10.76
45x45x26	48.3	6-10.76
45x45x26	50.8	6-10.76

Materials: AISI304/AISI316
 Materials: ZINC
 Surface: satin/mirror
 Surface: raw/plating





ARTICLE NO.80110 **Square Glass Clamp**

Spec(mm)	A(mm)	Glass (mm)
55x55x26	FLAT	8-10.76
55x55x26	33.7	8-10.76
55x55x26	38.1	8-10.76
55x55x26	42.4	8-10.76
55x55x26	48.3	8-10.76
55x55x26	50.8	8-10.76

Materials: AISI304/AISI316
 Materials: ZINC

Surface: satin/mirror
 Surface: raw/plating

ARTICLE NO.80120 **Square Glass Clamp With Plate**

Spec(mm)	A(mm)	Glass (mm)
55x55x35	FLAT	8-12.76
55x55x35	33.7	8-12.76
55x55x35	38.1	8-12.76
55x55x35	42.4	8-12.76
55x55x35	48.3	8-12.76
55x55x35	50.8	8-12.76

Materials: AISI304/AISI316
 Materials: ZINC

Surface: satin/mirror
 Surface: raw/plating

ARTICLE NO.80130 **Square Glass Clamp With Plate**

Spec(mm)	A(mm)	Glass (mm)
55x70x40	FLAT	12-17.52
55x70x40	33.7	12-17.52
55x70x40	38.1	12-17.52
55x70x40	42.4	12-17.52
55x70x40	48.3	12-17.52
55x70x40	50.8	12-17.52

Materials: AISI304/AISI316
 Materials: ZINC

Surface: satin/mirror
 Surface: raw/plating

ARTICLE NO.80160 **Glass Clamp**

Spec(mm)	A(mm)	Glass (mm)
52x58x27	FLAT	8-12.76
52x58x27	33.7	8-12.76
52x58x27	38.1	8-12.76
52x58x27	42.4	8-12.76
52x58x27	48.3	8-12.76
52x58x27	50.8	8-12.76

Materials: AISI304/AISI316

Surface: satin/mirror

ARTICLE NO.80200 **Round Glass Clamp**

A(mm)	Glass (mm)
Flat	8-12.76
33.7	8-12.76
38.1	8-12.76
42.4	8-12.76
48.3	8-12.76
50.8	8-12.76

Materials: AISI304/AISI316

Surface: satin/mirror

ARTICLE NO.80210 **Round Glass Clamp**

A(mm)	Glass (mm)
Flat	8-12.76
33.7	8-12.76
38.1	8-12.76
42.4	8-12.76
48.3	8-12.76
50.8	8-12.76

Materials: AISI304/AISI316

Surface: satin/mirror



POINT FIXING

POINT FIXING

ARTICLE NO.80300.00

Point Fixing

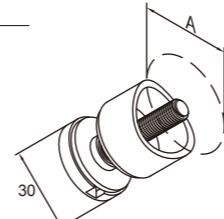
A(mm)	Glass (mm)
FLAT	6-16



Materials:AISI304/AISI316



Surface:satin/mirror



ARTICLE NO.80300.R

Point Fixing

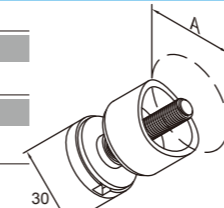
A(mm)	Glass (mm)
33.7	6-16
38.1	6-16
42.4	6-16
48.3	6-16
50.8	6-16



Materials:AISI304/AISI316



Surface:satin/mirror



ARTICLE NO.80310.00

Point Fixing

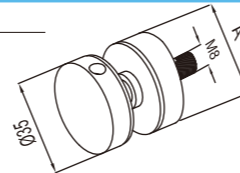
A(mm)	Glass (mm)
Flat	6-16



Materials:AISI304/AISI316



Surface:satin/mirror



ARTICLE NO.80310.R

Point Fixing

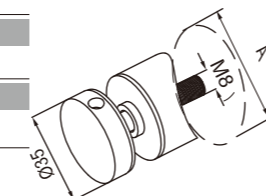
A(mm)	Glass (mm)
33.7	6-16
38.1	6-16
42.4	6-16
48.3	6-16
50.8	6-16



Materials:AISI304/AISI316



Surface:satin/mirror



ARTICLE NO.80320.00

Point Fixing

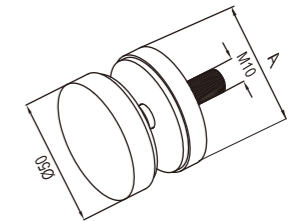
A(mm)	Glass (mm)
Flat	8-18



Materials:AISI304/AISI316



Surface:satin/mirror



ARTICLE NO.80320.R

Point Fixing

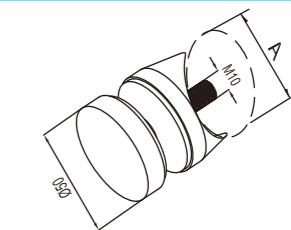
A(mm)	Glass (mm)
33.7	8-18
38.1	8-18
42.4	8-18
48.3	8-18
50.8	8-18



Materials:AISI304/AISI316



Surface:satin/mirror



ARTICLE NO.80330.00

Point Fixing

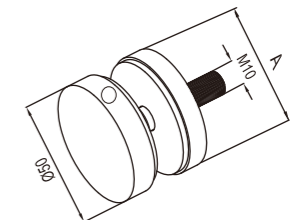
A(mm)	Glass (mm)
Flat	8-18



Materials:AISI304/AISI316



Surface:satin/mirror



ARTICLE NO.80340

Point Fixing

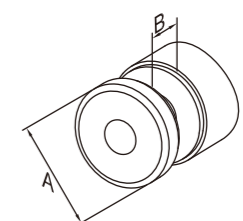
A(mm)	B(mm)
30	8-21
40	8-21
50	8-21



Materials:AISI304/AISI316



Surface:satin/mirror



TUBE CONNECTOR

GLASS CLAMP

SQUARE SYSTEM

CHANNEL TUBE SYSTEM

PLATEMOUNTING BRACKET/BASE COVER

TUBES & BARS

END CAPS & BALLS

CABLE WIRE SYSTEM

BAR HOLDER

RAILING POST

GATE HINGE/LOCKS & HANDLES

RAILING ORNAMENTAL BARS

HANDRAIL SUPPORT

FITTINGS FOR GLASS CLAMP

FITTINGS FOR GLASS CLAMP



ARTICLE NO.80901

Rubber Gasket For D Clamp

Glass Clamp Size(mm) Glass (mm)

40x50x26 (for 80000) 6-10



Materials:EPDM

ARTICLE NO.80902

Rubber Gasket For D Clamp

Glass Clamp Size(mm) Glass (mm)

45x63x28 (for 80010) 8-10.76

45x63x30 (for 80020) 8-12.76



Materials:EPDM

ARTICLE NO.80911

Rubber Gasket For Square Clamp

Glass Clamp Size(mm) Glass (mm)

45x45x26 (for 80100) 6-10.76



Materials:EPDM

ARTICLE NO.80912

Rubber Gasket For Square Clamp

Glass Clamp Size(mm) Glass (mm)

55x55x26 (for 80110) 8-10.76

55x55x35 (for 80120) 8-12.76



Materials:EPDM

ARTICLE NO.80913

Rubber Gasket For Square Clamp

Glass Clamp Size(mm) Glass (mm)

55x70x40 (for 80130) 8-16.76



Materials:EPDM

ARTICLE NO.80921

Rubber Gasket For Round Clamp

Glass Clamp Size(mm) Glass (mm)

60 6-12.76



Materials:EPDM

ARTICLE NO.80931

Security Pin

Glass Clamp Model

for 80000

for 80010

for 80020

for 80120

for 80130



Materials:AISI304/AISI316

ARTICLE NO.80941

Screw Button

Glass Clamp Model

for M6



Materials:ABS



ARTICLE NO. 80510 Round Glass Spigot

A(mm)	H(mm)	Glass (mm)
48	180/200/220/250	8/10/12/15/16/18
50	180/200/220/250	8/10/12/15/16/18

Materials: AISI304/AISI316
 Surface: satin/mirror

ARTICLE NO.80512 Round Glass Spigot

A(mm)	H(mm)	Glass (mm)
48	160/180	8/10/12/15/16

Materials: AISI304/AISI316
 Surface: satin/mirror

ARTICLE NO.80511 Round Glass Spigot

A(mm)	H(mm)	Glass (mm)
48	180/200/220/250	8/10/12/15/16/18
50	180/200/220/250	8/10/12/15/16/18

Materials: AISI304/AISI316
 Surface: satin/mirror

ARTICLE NO.80522 Square Glass Spigot

A(mm)	H(mm)	Glass (mm)
50	160/180	8/10/12/15/16

Materials: AISI304/AISI316
 Surface: satin/mirror

ARTICLE NO.80520 Square Glass Spigot

A(mm)	H(mm)	Glass (mm)
40x40	180/200/220/250	8/10/12/15/16/18
50x50	180/200/220/250	8/10/12/15/16/18

Materials: AISI304/AISI316
 Surface: satin/mirror

ARTICLE NO.80521 Square Glass Spigot

A(mm)	H(mm)	Glass (mm)
40x40	180/200/220/250	8/10/12/15/16/18
50x50	180/200/220/250	8/10/12/15/16/18

Materials: AISI304/AISI316
 Surface: satin/mirror



WELD GLASS CLAMP

WELD GLASS CLAMP



ARTICLE NO.80401/04

Weld On Glass Clamp

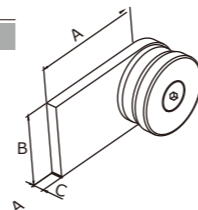
A(mm)	B(mm)	C(mm)	Glass
80	40	6	8-12.76
120	40	6	8-12.76



Materials:Steel



Surface:galvanizing



ARTICLE NO.80411/14

Weld On Glass Clamp Internal Corner

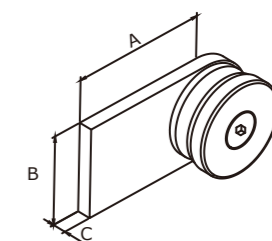
A(mm)	B(mm)	C(mm)	Glass
80	40	6	8-12.76
120	40	6	8-12.76



Materials:AISI304/AISI316



Surface:satin/mirror



ARTICLE NO.80405

Weld On Glass Clamp Double

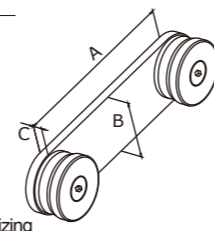
A(mm)	B(mm)	C(mm)	Glass
160	40	6	8-12.76



Materials:Steel



Surface:galvanizing



ARTICLE NO.80415

Weld On Glass Clamp External Corner

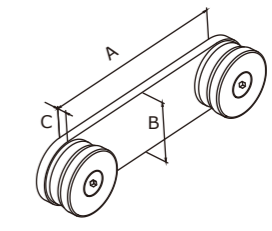
A(mm)	B(mm)	C(mm)	Glass
80	40	6	8-12.76



Materials:AISI304/AISI316



Surface:satin/mirror



ARTICLE NO.80403

Weld On Glass Clamp Internal Corner

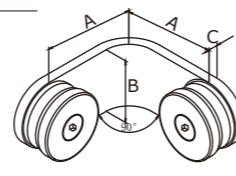
A(mm)	B(mm)	C(mm)	Glass
80	40	6	8-12.76



Materials:Steel



Surface:galvanizing



ARTICLE NO.80413

Weld On Glass Clamp Internal Corner

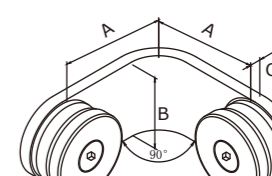
A(mm)	B(mm)	C(mm)	Glass
80	40	6	8-12.76



Materials:AISI304/AISI316



Surface:satin/mirror



ARTICLE NO.80402

Weld On Glass Clamp External Corner

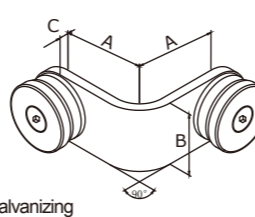
A(mm)	B(mm)	C(mm)	Glass
80	40	6	8-12.76



Materials:Steel



Surface:galvanizing



ARTICLE NO.80412

Weld On Glass Clamp Internal Corner

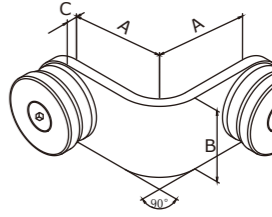
A(mm)	B(mm)	C(mm)	Glass
80	40	6	8-12.76



Materials:AISI304/AISI316



Surface:satin/mirror





CHANNEL TUBE SYSTEM

CHANNEL TUBE SYSTEM



Materials: AISI304/AISI316

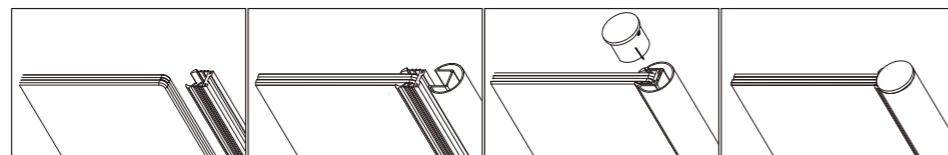


Surface: satin/mirror

CHANNEL TUBE SYSTEM



Installation Diagram

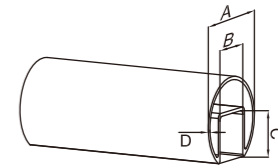


ARTICLE NO.51000

Round Channel Tube



A(mm)	B(mm)	C(mm)	D(mm)
42.4	24	24	1.5
48.3	27	30	1.5
50.8	15	15	1.5
63.5	20	20	1.5
76.2	25	25	1.5



Materials: AISI304/AISI316



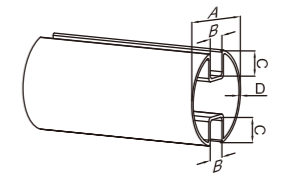
Surface: satin/mirror

ARTICLE NO.51010

Round Double Channel Tube



A(mm)	B(mm)	C(mm)	D(mm)
50	15	15	1.5



Materials: AISI304/AISI316



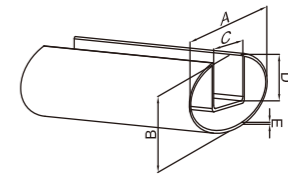
Surface: satin/mirror

ARTICLE NO.51100

Oval Channel Tube



A	B	C(mm)	D(mm)	E(mm)
80	40	24	24	1.5
110	40	26	33	1.5



Materials: AISI304/AISI316



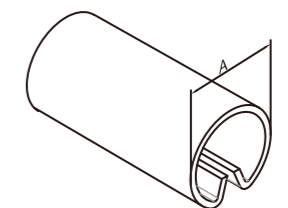
Surface: satin/mirror

ARTICLE NO.51410

Sheet Profile



A(mm)	SHEET THICKNESS(mm)
18x1.2	1.5-2
27x1.7	1.5-2



Materials: AISI304/AISI316



Surface: satin/mirror

TUBE CONNECTOR

GLASS CLAMP

SQUARE SYSTEM

CHANNEL TUBE SYSTEM

PLATE MOUNTING BRACKET/BASE COVER

TUBES & BARS

END CAPS & BALLS

CABLE WIRE SYSTEM

BAR HOLDER

RAILING POST

GATE HINGE LOCKS & HANDLES

RAILING ORNAMENTAL BARS

HANDRAIL SUPPORT

CHANNEL TUBE SYSTEM

CHANNEL TUBE SYSTEM



ARTICLE NO.51200 Square Channel Tube

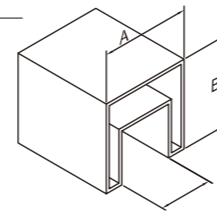
A(mm)	B(mm)	C(mm)
40	40	24



Materials:AISI304/AISI316



Surface:satin/mirror



ARTICLE NO.51300 Rectangular Channel Tube

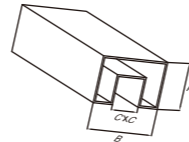
A(mm)	B(mm)	C(mm)
60	40	24



Materials:AISI304/AISI316



Surface:satin/mirror



ARTICLE NO.51400 U-Profile

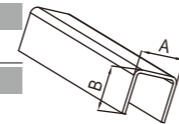
A(mm)	B(mm)	TUBE WALL THICKNESS
14	15	1.5
17	20	1.5
21	20	1.5
25	22	1.5



Materials:AISI304/AISI316



Surface:satin/mirror



ARTICLE NO.53900 Rubber For Channel Tube

Slot size(mm)	Glass(mm)
24x24	8-10.76
24x24	12-16.76
24x24	18
24x24	19-21.52
27x30	8-13
27x30	14-18
27x30	19-21.52



Materials:EPDM

ARTICLE NO.51500 Glass Railing System

A(mm)	L(mm)
12	2500/5000
12.76	2500/5000
13.52	2500/5000
15	2500/5000
16.76	2500/5000
17.52	2500/5000
19	2500/5000
20.76	2500/5000
21.52	2500/5000



Materials: Aluminum Alloy



Surface: Oxidation



CHANNEL TUBE SYSTEM

CHANNEL TUBE SYSTEM



TUBE CONNECTOR

GLASS CLAMP

SQUARE SYSTEM

CHANNEL TUBE SYSTEM

PLATEMOUNTING BRACKET/BASE COVER

TUBES & BARS

END CAPS & BALLS

CABLE WIRE SYSTEM

BAR HOLDER

RAILING POST

RAILING ORNAMENTAL BARS

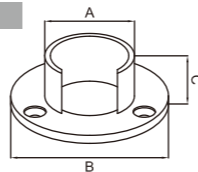
GATE HINGELOCKS & HANDLES

HANDRAIL SUPPORT

ARTICLE NO.53200

Wall Fixing

A(mm)	B(mm)	C(mm)	TUBE WALL THICKNESS
42.4	85	30	1.5
48.3	85	30	1.5



Materials: AISI304/AISI316

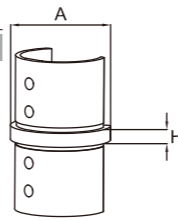


Surface: satin/mirror

ARTICLE NO.53100

Connector

A(mm)	B(mm)	TUBE WALL THICKNESS
42.4	6	1.5
48.3	6	1.5



Materials: AISI304/AISI316

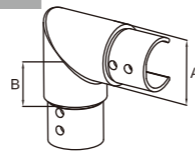


Surface: satin/mirror

ARTICLE NO.53120

Corner Connector Horizontal

A(mm)	B(mm)	TUBE WALL THICKNESS
42.4	30	1.5
48.3	30	1.5



Materials: AISI304/AISI316

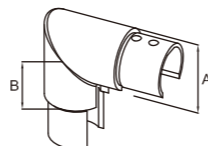


Surface: satin/mirror

ARTICLE NO.53110

Corner Connector Vertical

A(mm)	B(mm)	TUBE WALL THICKNESS
42.4	30	1.5
48.3	30	1.5



Materials: AISI304/AISI316

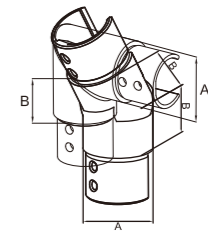


Surface: satin/mirror

ARTICLE NO.53130

Flexible Connector, upward 25°-55°

A(mm)	B(mm)	TUBE WALL THICKNESS
42.4	30	1.5
48.3	30	1.5



Materials: AISI304/AISI316

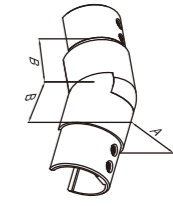


Surface: satin/mirror

ARTICLE NO.53131

Flexible Connector, downward 25°-55°

A(mm)	B(mm)	TUBE WALL THICKNESS
42.4	30	1.5
48.3	30	1.5



Materials: AISI304/AISI316

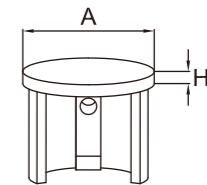


Surface: satin/mirror

ARTICLE NO.53020

Channel Tube End Cap

A(mm)	H(mm)	TUBE WALL THICKNESS
42.4	4	1.5
48.3	4	1.5



Materials: AISI304/AISI316

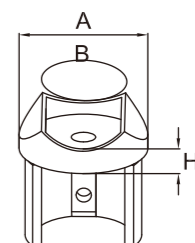


Surface: satin/mirror

ARTICLE NO.53010

Adapter

A(mm)	B(mm)	H(mm)	TUBE WALL THICKNESS
42.4	42.4	7	1.5
48.3	48.3	7	1.5



Materials: AISI304/AISI316



Surface: satin/mirror

CHANNEL TUBE SYSTEM

CHANNEL TUBE SYSTEM



ARTICLE NO.53140 Connector For Sheet Profile

A(mm)
18
27

Materials: AISI304/AISI316
Surface: satin/mirror

ARTICLE NO.53150 Connector

A(mm)	B(mm)	H(mm)	TUBE WALL THICKNESS
40	40	6	1.5

Materials: AISI304/AISI316
Surface: satin/mirror

ARTICLE NO.53160 Corner Connector Horizontal

A(mm)	B(mm)	H(mm)	TUBE WALL THICKNESS
60	40	6	1.5

Materials: AISI304/AISI316
Surface: satin/mirror

ARTICLE NO.53170 Flexible Connector Horizontal

A(mm)	B(mm)	TUBE WALL THICKNESS
40	40	1.5

Materials: AISI304/AISI316
Surface: satin/mirror

ARTICLE NO.53180 Flexible Connector Upward

A(mm)	B(mm)	H(mm)	TUBE WALL THICKNESS
40	40	20	1.5

Materials: AISI304/AISI316
Surface: satin/mirror

ARTICLE NO.53181 Flexible Connector Downward

A(mm)	B(mm)	H(mm)	TUBE WALL THICKNESS
40	40	20	1.5

Materials: AISI304/AISI316
Surface: satin/mirror

ARTICLE NO.53030 End Cap

A(mm)	B(mm)	H(mm)	TUBE WALL THICKNESS
40	40	4	1.5
60	40	4	1.5

Materials: AISI304/AISI316
Surface: satin/mirror

ARTICLE NO.53040 End Cap

A(mm)	B(mm)	H(mm)	TUBE WALL THICKNESS
80	40	4	1.5

Materials: AISI304/AISI316
Surface: satin/mirror

SQUARE HANDRAIL SYSTEM

SQUARE HANDRAIL SYSTEM

Materials: AISI304/AISI316 Surface: satin/mirror

SQUARE HANDRAIL SYSTEM

ARTICLE NO.22201

Handrail Support



A(mm)

Flat

42.4

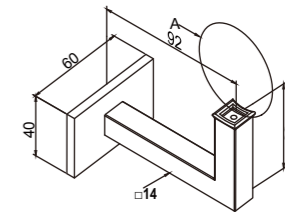
48.3



Materials: AISI304/AISI316



Surface: satin/mirror



ARTICLE NO.23150

Handrail Support



A(mm)

Flat

42.4

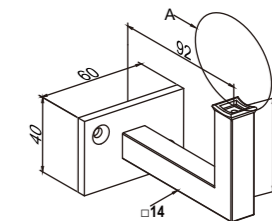
48.3



Materials: AISI304/AISI316



Surface: satin/mirror



ARTICLE NO.23160

Handrail Support, Adjustable



A(mm)

Flat

42.4

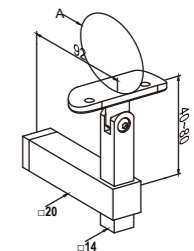
48.3



Materials: AISI304/AISI316



Surface: satin/mirror



ARTICLE NO.20060

Handrail Support, Adjustable



A(mm)

Flat

42.4

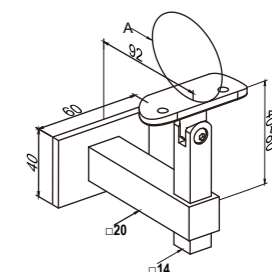
48.3



Materials: AISI304/AISI316



Surface: satin/mirror



SQUARE HANDRAIL SYSTEM

SQUARE HANDRAIL SYSTEM



ARTICLE NO.22201

Handrail Support,Adjustable

A(mm)

Flat

42.4

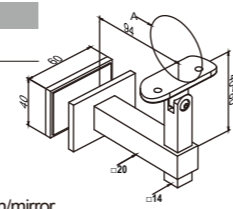
48.3



Materials:AISI304/AISI316



Surface:satin/mirror



ARTICLE NO.23150

Handrail Support

A(mm)

B(mm)

Flat

40

42.4

40

48.3

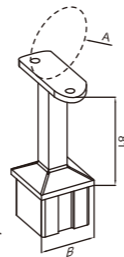
40



Materials:AISI304/AISI316



Surface:satin/mirror



ARTICLE NO.23160

Handrail Support,Adjustable

A(mm)

B(mm)

Flat

40

42.4

40

48.3

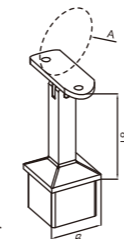
40



Materials:AISI304/AISI316



Surface:satin/mirror



ARTICLE NO.20060

Handrail Pin

A(mm)

B

C(mm)

68

M10

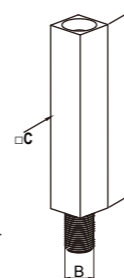
14



Materials:AISI304/AISI316



Surface:satin/mirror



ARTICLE NO.20230

Handrail Pin,Adjustable

A(mm)

B

C(mm)

68

M10

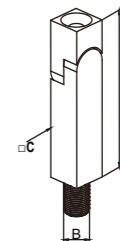
14



Materials:AISI304/AISI316



Surface:satin/mirror



ARTICLE NO.60200

Hollow End Cap

A(mm)

H(mm)

30

4

40

4

50

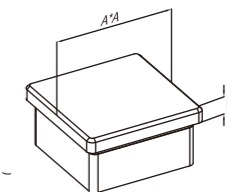
4



Materials:AISI304/AISI316



Surface:satin/mirror



ARTICLE NO.60200.M8

Hollow End Cap With M8 Thread

A(mm)

H(mm)

30

2

40

2

50

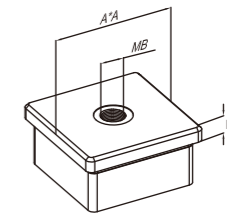
2



Materials:AISI304/AISI316



Surface:satin/mirror



ARTICLE NO.63100

Square End Cap, Flexible

A(mm)

H(mm)

Tube wall thickness

20x20

5

1.5-2.0

25x25

5

2.0-3.0

30x30

5

1.5-3.0

40x40

5

2.0-3.0

50x50

5

2.0-3.0

60x60

5

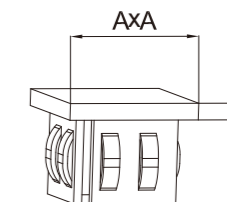
2.0-3.0



Materials:Steel



Surface:raw



SQUARE HANDRAIL SYSTEM

SQUARE HANDRAIL SYSTEM



ARTICLE NO.63100.M8 Square End Cap With M8 Thread, Flexible

A(mm)	H(mm)	Tube wall thickness
40x40	5	1.5-2.0
50x50	5	2.0-3.0
60x60	5	2.0-3.0

Materials: Steel Surface: raw

ARTICLE NO.63110 Rectangle End Cap, Flexible

A(mm)	B(mm)	H(mm)	Tube wall thickness
40	20	5	1.5-2.0
50	30	5	2.0-3.0
60	40	5	2.0-3.0

Materials: Steel Surface: raw

ARTICLE NO.63110.M8 Rectangle End Cap With M8 Thread, Flexible

A(mm)	B(mm)	H(mm)	Tube wall thickness
40	20	5	1.5-2.0
50	30	5	2.0-3.0
60	40	5	2.0-3.0

Materials: Steel Surface: raw

ARTICLE NO.30100 Base Cover

A(mm)	B(mm)	C(mm)
40.5	96	28
47	96	28

Materials: AISI304/AISI316 Surface: satin/mirror

ARTICLE NO.30140 Base Cover

A(mm)	B(mm)	C(mm)
93	40	25
108	40	25

Materials: AISI304/AISI316 Surface: satin/mirror

ARTICLE NO.24230 Baluster Bracket

A(mm)	B(mm)	C(mm)
150	130	40

Materials: AISI304/AISI316 Surface: satin/mirror

ARTICLE NO.24210 Baluster Bracket

A(mm)	B(mm)	C(mm)	D(mm)
135	60	30	6

Materials: AISI304/AISI316 Surface: satin/mirror

ARTICLE NO.52500 Tube Connector

A(mm)
40x40

Materials: AISI304/AISI316 Surface: satin/mirror

SQUARE HANDRAIL SYSTEM

SQUARE HANDRAIL SYSTEM



ARTICLE NO.52510 Tube Connector 90°

A(mm)
40x40

Materials: AISI304/AISI316
Surface: satin/mirror

ARTICLE NO.52520 T-connector

A(mm)
40x40

Materials: AISI304/AISI316
Surface: satin/mirror

ARTICLE NO.52530 Corner Connector-3 Way

A(mm)
40x40

Materials: AISI304/AISI316
Surface: satin/mirror

ARTICLE NO.52540 Cross Connector-4 Way

A(mm)
40x40

Materials: AISI304/AISI316
Surface: satin/mirror

ARTICLE NO.52550 Corner Connector With Joint

A(mm)
40x40

Materials: AISI304/AISI316
Surface: satin/mirror

ARTICLE NO.32100 End Fittings

A(mm)	B(mm)	C(mm)
35	35	4
40	40	4
50	50	4

Materials: AISI304/AISI316
Surface: satin/mirror

ARTICLE NO.31110 Anchor Plate

A(mm)	B(mm)	C(mm)
95	40	30

Materials: AISI304/AISI316
Surface: raw

ARTICLE NO.31100 Anchor Plate

A(mm)	B(mm)	C(mm)
100	40	18

Materials: AISI304/AISI316
Surface: satin/mirror

SQUARE HANDRAIL SYSTEM

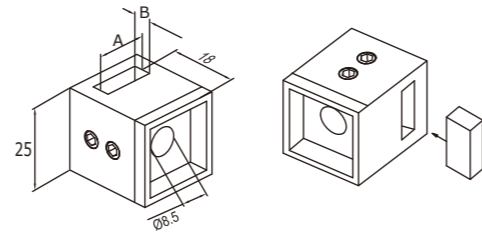
SQUARE HANDRAIL SYSTEM



ARTICLE NO.81330

Cross Bar Holder, With Left Blind Hole

A(mm) 15.5
B(mm) 5.5

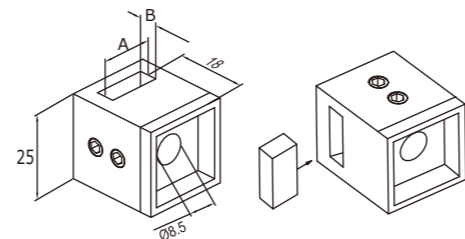


Materials: AISI304/AISI316
Surface: satin/mirror

ARTICLE NO.81330.L

Cross Bar Holder, With Right Blind Hole

A(mm) 15.5
B(mm) 5.5

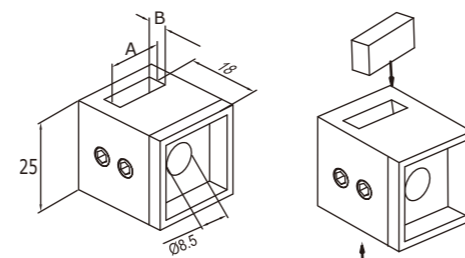


Materials: AISI304/AISI316
Surface: satin/mirror

ARTICLE NO.81330.R

Cross Bar Holder

A(mm) 15.5
B(mm) 5.5



Materials: AISI304/AISI316
Surface: satin/mirror





CABLE WIRE SYSTEM

CABLE WIRE SYSTEM



Materials: AISI304/AISI316



Surface: satin/mirror

CABLE WIRE SYSTEM



ARTICLE NO.86300

Cable Wire 1x7



Dia. (mm)	Weight (KG/100m)	Break strength (N/m ²)	Min. breaking force (KN)
0.5	0.13	1870	0.257
0.6	0.19	1170	0.35
1	0.5	1700	0.973
1.5	1.13	1570	1.94
2	2.07	1570	3.45
3	4.65	1570	7.76
4	8.27	1570	13.8
5	12.93	1570	21.57
6	18.2	1270	25.12



Materials: AISI304/AISI316



Surface: satin/mirror

ARTICLE NO.86310

Cable Wire 1x19



Dia. (mm)	Weight (KG/100m)	Break strength (N/m ²)	Min. breaking force (KN)
0.5	0.13	1770	0.232
0.8	0.32	1770	0.595
1	0.5	1770	0.93
1.5	1.13	1770	2.09
2	2	1770	3.72
2.5	3.13	1570	5.15
3	4.5	1570	7.42
4	8	1570	13.19
5	12.5	1570	20.61
6	18	1270	24
8	32	1170	39.31
10	50	1070	56.18
12	72	1070	80.89



Materials: AISI304/AISI316



Surface: satin/mirror

- TUBE CONNECTOR
- GLASS CLAMP
- SQUARE SYSTEM
- CHANNEL TUBE SYSTEM
- PLATEMOUNTING BRACKET/BASE COVER
- TUBES & BARS
- CABLE WIRE SYSTEM
- END CAPS & BALLS
- RAILING POST
- BAR HOLDER
- RAILING ORNAMENTAL BARS
- GATE HINGE/LOCKS & HANDLES
- HANDRAIL SUPPORT

ARTICLE NO.86320

Cable Wire 7x7



Dia. (mm)	Weight (KG/100m)	Break strength (N/m ^{mm})	Min. breaking force (KN)
0.36	0.05	1870	0.092
0.5	0.1	1870	0.178
0.8	0.26	1870	0.455
1	0.41	1770	0.672
1.2	0.58	1770	0.968
1.5	0.92	1770	1.51
1.8	1.32	1770	2.18
2	1.6	1770	2.69
2.5	2.54	1770	4.2
3	3.65	1770	5.71
4	6.4	1570	10.2
5	10	1570	15.9
6	14.4	1570	22.9
8	25.6	1570	40
10	40.9	1570	56.3

Materials: AISI304/AISI316 Surface: satin/mirror

ARTICLE NO.86330

Cable Wire 7x19



Dia. (mm)	Weight (KG/100m)	Break strength (N/m ^{mm})	Min. breaking force (KN)
0.75	0.23	1870	0.39
1	0.41	1870	0.69
1.2	0.59	1870	1
1.5	0.92	1870	1.56
2	1.63	1770	2.63
2.5	2.55	1770	4.11
3	3.68	1770	5.91
4	6.53	1770	10.51
5	10.2	1770	16.43
6	14.4	1770	23.65
8	25.6	1570	37.3
10	40	1570	58.3
12	57.6	1570	83.9
14	78.4	1570	114.2
16	102.4	1470	125

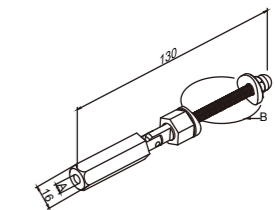
Materials: AISI304/AISI316 Surface: satin/mirror

ARTICLE NO.86000

Wire Tensioner Variable



A(mm)	B(mm)
5.7	42.4
7	42.4



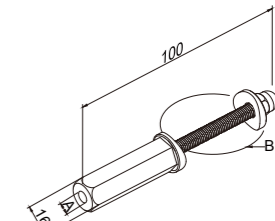
Materials: AISI304/AISI316 Surface: satin/mirror

ARTICLE NO.86010

Wire Tensioner, Rigid



A(mm)	B(mm)
5.7	42.4
7	42.4



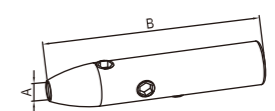
Materials: AISI304/AISI316 Surface: satin/mirror

ARTICLE NO.86020

Wire Tensioner



A(mm)	B(mm)
4.8	60
5.8	60
6.8	60



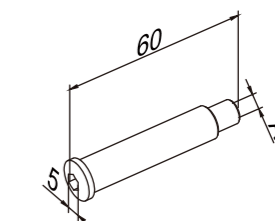
Materials: AISI304/AISI316 Surface: satin/mirror

ARTICLE NO.86030

Wire Tensioner



A(mm)
5



Materials: AISI304/AISI316 Surface: satin/mirror

CABLE WIRE COMPONENT

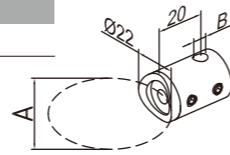
CABLE WIRE COMPONENT

ARTICLE NO.86060

Cross Cable Wire Holder



A(mm)	B(mm)
42.4	4.5
42.4	5.5
42.4	6.5



Materials:AISI304/AISI316



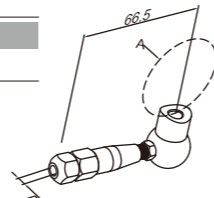
Surface:satin/mirror

ARTICLE NO.86100

Tumbuckle 2 Eyes



A(mm)	B(mm)
42.4	4.5
42.4	5.5
42.4	6.5



Materials:AISI304/AISI316



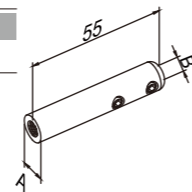
Surface:satin/mirror

ARTICLE NO.86040

Joint Connector



A(mm)	B(mm)
12	4.1
12	5.1
12	6.1



Materials:AISI304/AISI316



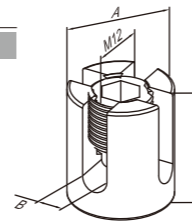
Surface:satin/mirror

ARTICLE NO.86060

Cable Wire Stop 90°



A(mm)	B(mm)	H(mm)
20	3.3	19
20	4	21



Materials:AISI304/AISI316



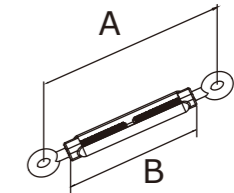
Surface:satin/mirror

ARTICLE NO.86050

Wire tensioner



A(mm)	B(mm)
100	60
120	70
160	90
200	120



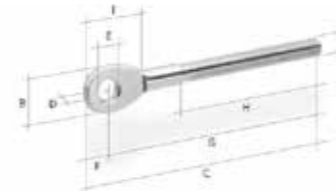
Materials:AISI304/AISI316



Surface:satin/mirror

ARTICLE NO.86130

Wire tensioner



A	B	C	D	E	F	G	H	I	R/L
M5	12	61	3	5.5	7	54	36	18	R
M6	14	69	4	6.5	7.5	62	38	16	R



Materials:AISI304/AISI316



Surface:satin/mirror

ARTICLE NO.86110

Wire tensioner



Size	A	B
M4	80	125
M5	80	130
M6	90	140



Materials:AISI304/AISI316



Surface:satin/mirror

ARTICLE NO.86120

Wire tensioner



Size	A	B
M4	80	7
M5	80	8
M6	90	10



Materials:AISI304/AISI316



Surface:satin/mirror

CABLE WIRE COMPONENT

CABLE WIRE COMPONENT

ARTICLE NO.86140



	A	B	C	D	E	F	G
M8	20	49	20	36	8	13	
M10	25	62	25	45	10	17	
M12	30	73	30	54	12	20.5	

Materials: AISI304/AISI316 Surface: satin/mirror

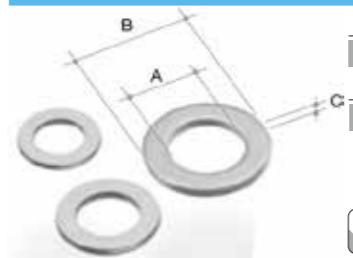
ARTICLE NO.86150



	A	B	C	D	E
5	5	10	10	17	
6	6	12	12	21	
8	8	16	16	28	
10	10	19	19	35	

Materials: AISI304/AISI316 Surface: satin/mirror

ARTICLE NO.86172



	A	B	C
4.3	8	0.5	
5.3	9	1	
6.4	11	1.6	
8.4	15	1.6	

Materials: AISI304/AISI316 Surface: satin/mirror

ARTICLE NO.86171



Size	A	B	R/L
M4	3.2	7	R
M5	4	8	R
M6	5	10	R
M8	6.5	13	R

Materials: AISI304/AISI316 Surface: satin/mirror

ARTICLE NO.86173



Size	A	B	C
M4	8	7	4.1
M5	10	8	5.9
M6	12	10	6
M8	15	13	8.5
10	18	17	10

Materials: AISI304/AISI316 Surface: satin/mirror

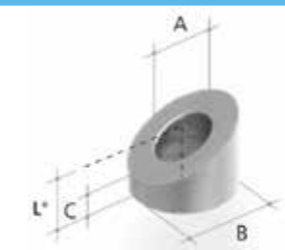
ARTICLE NO.86174



Size	L	R/L
M4	30	R
M5	40	R
M6	40	R

Materials: AISI304/AISI316 Surface: satin/mirror

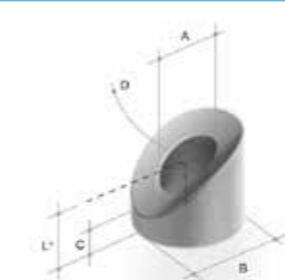
ARTICLE NO.86160



Size	A	B	Lead angle								
			0°	20°	25°	30°	35°	40°	45°	50°	55°
M4	4.5	10	10	4.8	5.3	5.9	6.5	7.2	8	9	10.1
M5	5.5	10	10	4.8	5.3	5.9	6.5	7.2	8	9	10.1
M6	6.5	13	10	5.4	6	6.8	7.8	8.5	9.5	10.7	12.3

Materials: AISI304/AISI316 Surface: satin/mirror

ARTICLE NO.86161



Size	A	B	Lead angle								
			0°	20°	25°	30°	35°	40°	45°	50°	55°
M4	4.5	10	10	4.8	5.3	5.9	6.5	7.2	8	9	10.1
M5	5.5	10	10	4.8	5.3	5.9	6.5	7.2	8	9	10.1
M6	6.5	13	10	5.4	6	6.8	7.8	8.5	9.5	10.7	12.3

Materials: AISI304/AISI316 Surface: satin/mirror



RAILING ORNAMENTAL BAR

RAILING ORNAMENTAL BAR



Materials: AISI304/AISI316



Surface: satin/mirror

RAILING ORNAMENTAL BAR



ARTICLE NO.79201

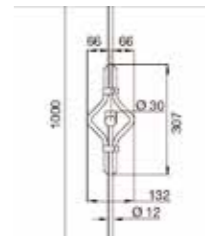
Ornamental Bars



Materials: AISI304/AISI316



Surface: satin/mirror



ARTICLE NO.79202

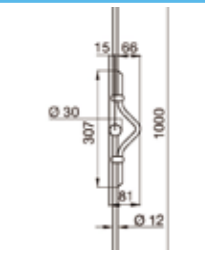
Ornamental Bars



Materials: AISI304/AISI316



Surface: satin/mirror



ARTICLE NO.79203

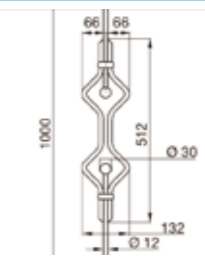
Ornamental Bars



Materials: AISI304/AISI316



Surface: satin/mirror



ARTICLE NO.79204

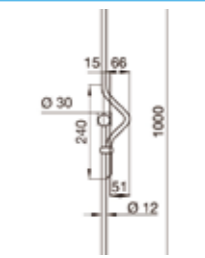
Design Bar Infills



Materials: AISI304/AISI316



Surface: satin/mirror



TUBE CONNECTOR

GLASS CLAMP

SQUARE SYSTEM

PLATEMOUNTING BRACKET/BASE COVER

CHANNEL TUBE SYSTEM

TUBES & BARS

END CAPS & BALLS

CABLE WIRE SYSTEM

BAR HOLDER

RAILING POST

RAILING
ORNAMENTAL BARS

GATE HINGE/LOCKS & HANDLES

HANDRAIL SUPPORT

RAILING ORNAMENTAL BAR

RAILING ORNAMENTAL BAR



ARTICLE NO.79205

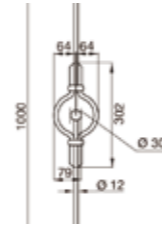
Ornamental Bars



Materials:AISI304/AISI316



Surface:satin/mirror



ARTICLE NO.79209

Ornamental Bars



Materials:AISI304/AISI316



Surface:satin/mirror



ARTICLE NO.79206

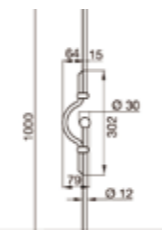
Ornamental Bars



Materials:AISI304/AISI316



Surface:satin/mirror



ARTICLE NO.79210

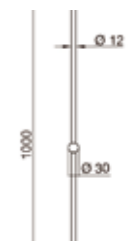
Ornamental Bars



Materials:AISI304/AISI316



Surface:satin/mirror



ARTICLE NO.79207

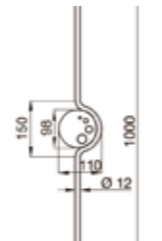
Ornamental Bars



Materials:AISI304/AISI316



Surface:satin/mirror



ARTICLE NO.79211

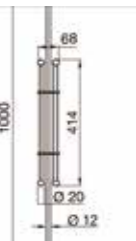
Ornamental Bars



Materials:AISI304/AISI316



Surface:satin/mirror



ARTICLE NO.79208

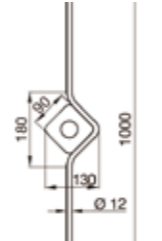
Ornamental Bars



Materials:AISI304/AISI316



Surface:satin/mir



ARTICLE NO.79212

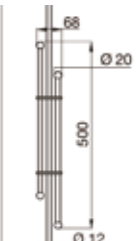
Ornamental Bars



Materials:AISI304/AISI316



Surface:satin/mirror



RAILING POST

RAILING POST

Materials: AISI304/AISI316 Surface: satin/mirror

RAILING POST

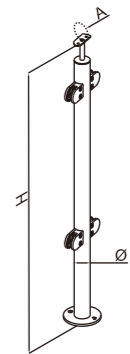


ARTICLE NO.88310



A(mm)	H(mm)	Φ(mm)
Flat	960/1050	42.4/48.3
33.7	960/1050	42.4/48.3
38.1	960/1050	42.4/48.3
42.4	960/1050	42.4/48.3
48.3	960/1050	42.4/48.3
50.8	960/1050	42.4/48.3

Materials: AISI304/AISI316 Surface: satin/mirror

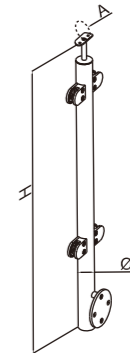


ARTICLE NO.88311



A(mm)	H(mm)	Φ(mm)
Flat	1180/1330	42.4/48.3
33.7	1180/1330	42.4/48.3
38.1	1180/1330	42.4/48.3
42.4	1180/1330	42.4/48.3
48.3	1180/1330	42.4/48.3
50.8	1180/1330	42.4/48.3

Materials: AISI304/AISI316 Surface: satin/mirror

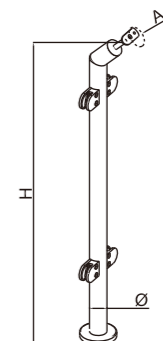


ARTICLE NO.88320



A(mm)	H(mm)	Φ(mm)
Flat	960/1050	42.4/48.3
33.7	960/1050	42.4/48.3
38.1	960/1050	42.4/48.3
42.4	960/1050	42.4/48.3
48.3	960/1050	42.4/48.3
50.8	960/1050	42.4/48.3

Materials: AISI304/AISI316 Surface: satin/mirror



RAILING POST

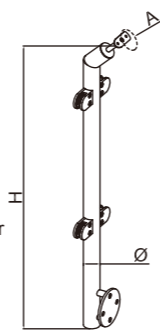
RAILING POST

ARTICLE NO.88321



A(mm)	H(mm)	Φ(mm)
Flat	1180/1330	42.4/48.3
33.7	1180/1330	42.4/48.3
38.1	1180/1330	42.4/48.3
42.4	1180/1330	42.4/48.3
48.3	1180/1330	42.4/48.3
50.8	1180/1330	42.4/48.3

Materials: AISI304/AISI316 Surface: satin/mirror

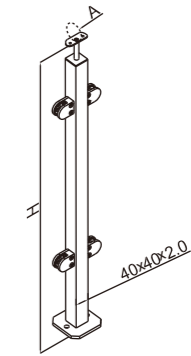


ARTICLE NO.88420



A(mm)	H(mm)
Flat	960/1050
33.7	960/1050
38.1	960/1050
42.4	960/1050
48.3	960/1050
50.8	960/1050

Materials: AISI304/AISI316 Surface: satin/mirror

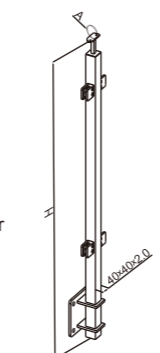


ARTICLE NO.88411



A(mm)	H(mm)
Flat	960/1050
33.7	960/1050
38.1	960/1050
42.4	960/1050
48.3	960/1050
50.8	960/1050

Materials: AISI304/AISI316 Surface: satin/mirror

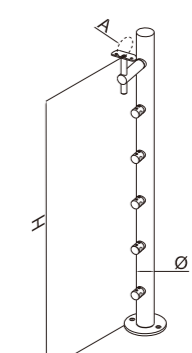


ARTICLE NO.88330



A(mm)	H(mm)	Φ(mm)
Flat	960/1050	42.4/48.3
33.7	960/1050	42.4/48.3
38.1	960/1050	42.4/48.3
42.4	960/1050	42.4/48.3
48.3	960/1050	42.4/48.3
50.8	960/1050	42.4/48.3

Materials: AISI304/AISI316 Surface: satin/mirror

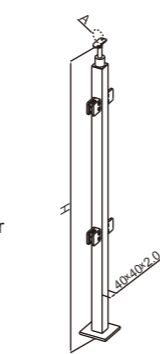


ARTICLE NO.88410



A(mm)	H(mm)
Flat	1180/1330
33.7	1180/1330
38.1	1180/1330
42.4	1180/1330
48.3	1180/1330
50.8	1180/1330

Materials: AISI304/AISI316 Surface: satin/mirror

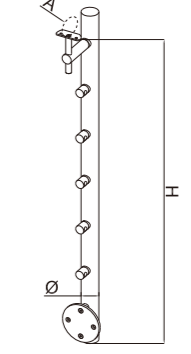


ARTICLE NO.88331



A(mm)	H(mm)	Φ(mm)
Flat	1180/1330	42.4/48.3
33.7	1180/1330	42.4/48.3
38.1	1180/1330	42.4/48.3
42.4	1180/1330	42.4/48.3
48.3	1180/1330	42.4/48.3
50.8	1180/1330	42.4/48.3

Materials: AISI304/AISI316 Surface: satin/mirror



RAILING POST

RAILING POST

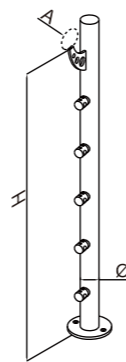


ARTICLE NO.88340



A(mm)	H(mm)	Φ(mm)
Flat	960/1050	42.4/48.3
33.7	960/1050	42.4/48.3
38.1	960/1050	42.4/48.3
42.4	960/1050	42.4/48.3
48.3	960/1050	42.4/48.3
50.8	960/1050	42.4/48.3

Materials: AISI304/AISI316 Surface: satin/mirror

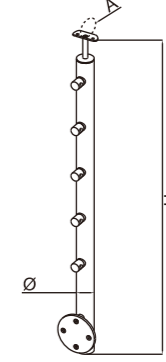


ARTICLE NO.88351



A(mm)	H(mm)	Φ(mm)
Flat	1180/1330	42.4/48.3
33.7	1180/1330	42.4/48.3
38.1	1180/1330	42.4/48.3
42.4	1180/1330	42.4/48.3
48.3	1180/1330	42.4/48.3
50.8	1180/1330	42.4/48.3

Materials: AISI304/AISI316 Surface: satin/mirror

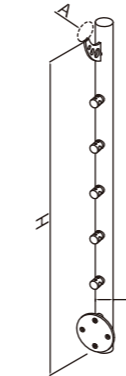


ARTICLE NO.88341



A(mm)	H(mm)	Φ(mm)
Flat	1180/1330	42.4/48.3
33.7	1180/1330	42.4/48.3
38.1	1180/1330	42.4/48.3
42.4	1180/1330	42.4/48.3
48.3	1180/1330	42.4/48.3
50.8	1180/1330	42.4/48.3

Materials: AISI304/AISI316 Surface: satin/mirror

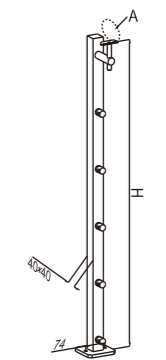


ARTICLE NO.88430



A(mm)	H(mm)
Flat	960/1050
33.7	960/1050
38.1	960/1050
42.4	960/1050
48.3	960/1050
50.8	960/1050

Materials: AISI304/AISI316 Surface: satin/mirror

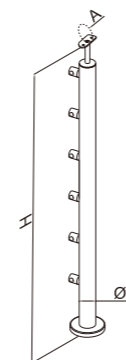


ARTICLE NO.88350



A(mm)	H(mm)	Φ(mm)
Flat	960/1050	42.4/48.3
33.7	960/1050	42.4/48.3
38.1	960/1050	42.4/48.3
42.4	960/1050	42.4/48.3
48.3	960/1050	42.4/48.3
50.8	960/1050	42.4/48.3

Materials: AISI304/AISI316 Surface: satin/mirror

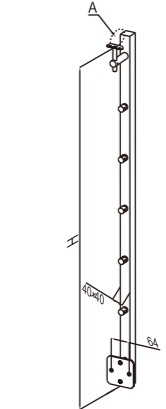


ARTICLE NO.88431



A(mm)	H(mm)
Flat	1180/1330
33.7	1180/1330
38.1	1180/1330
42.4	1180/1330
48.3	1180/1330
50.8	1180/1330

Materials: AISI304/AISI316 Surface: satin/mirror





ARTICLE NO.88440



A(mm)	H(mm)
Flat	960/1050
33.7	960/1050
38.1	960/1050
42.4	960/1050
48.3	960/1050
50.8	960/1050

Materials: AISI304/AISI316 Surface: satin/mirror

ARTICLE NO.88460



A(mm)	H(mm)	B(mm)
Flat	880/958	216
33.7	880/958	216
38.1	880/958	216
42.4	880/958	216
48.3	880/958	216
50.8	880/958	216

Materials: AISI304/AISI316 Surface: satin/mirror

ARTICLE NO.88441



A(mm)	H(mm)
Flat	1180/1330
33.7	1180/1330
38.1	1180/1330
42.4	1180/1330
48.3	1180/1330
50.8	1180/1330

Materials: AISI304/AISI316 Surface: satin/mirror

ARTICLE NO.88461



A(mm)	H(mm)	B(mm)
Flat	880/958	216
33.7	880/958	216
38.1	880/958	216
42.4	880/958	216
48.3	880/958	216
50.8	880/958	216

Materials: AISI304/AISI316 Surface: satin/mirror

ARTICLE NO.88450



A(mm)	H(mm)
Flat	960/1050
33.7	960/1050
38.1	960/1050
42.4	960/1050
48.3	960/1050
50.8	960/1050

Materials: AISI304/AISI316 Surface: satin/mirror

ARTICLE NO.88470



A(mm)	H(mm)
Flat	880/958
33.7	880/958
38.1	880/958
42.4	880/958
48.3	880/958
50.8	880/958

Materials: AISI304/AISI316 Surface: satin/mirror

TUBE
& BAR

TUBE
& BAR

Materials: AISI304/AISI316 Surface: satin/mirror

TUBE & BAR



ARTICLE NO.57000 Round Bar

A(mm)

10
12
14



Materials: AISI304/AISI316 Surface: satin/mirror



ARTICLE NO.50000

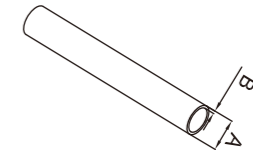
Round Tube

A(mm) B(mm)

12/16	1
12/16/20/25/33.7/38.1/42.4/48.3/50.8/60.3	1.5
12/16/20/25/33.7/38.1/42.4/48.3/50.8/60.3	2.0
12/16/20/25/33.7/38.1/42.4/48.3/50.8/60.3	2.6



Materials: AISI304/AISI316 Surface: satin/mirror



ARTICLE NO.50100

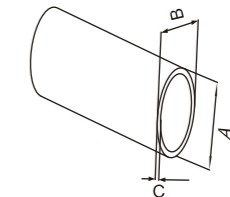
Oval Tube

A(mm) B(mm) C(mm)

38	23	1.5/2.0
46	28	1.5/2.0
62	38	1.5/2.0
75	42	1.5/2.0
40	20	1.5/2.0
110	40	1.5/2.0
120	60	2.0



Materials: AISI304/AISI316 Surface: satin/mirror



ARTICLE NO.50200

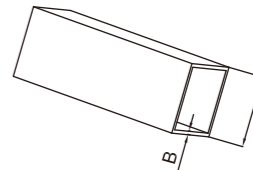
Square Tube

A(mm) B(mm)

22.2x22.2	1.5/2
30x30	1.5/2
40x40	1.5/2
50x50	1.5/2



Materials: AISI304/AISI316 Surface: satin/mirror



ARTICLE NO.50300

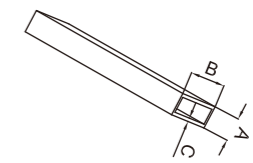
Rectangle Tube

A(mm) B(mm) C(mm)

10	30	1.5/2.0
15	30	1.5/2.0
10	40	1.5/2.0
10	50	1.5/2.0
10	60	1.5/2.0
10	75	1.5/2.0



Materials: AISI304/AISI316 Surface: satin/mirror



ARTICLE NO.50400

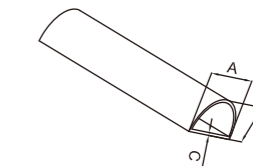
"D" Tube

A(mm) B(mm) C(mm)

30	20	1.5/2.0
62	32	1.5/2.0



Materials: AISI304/AISI316 Surface: satin/mirror



Materials: AISI304/AISI316 Surface: satin/mirror

BAR HOLDER



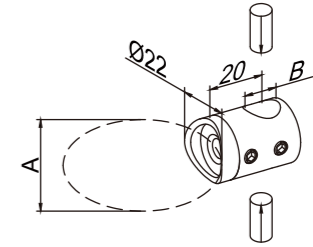
ARTICLE NO.81010

Cross Bar Holder With Through Hole

AΦ(mm)	B(mm)
flat/33.7/38.1/42.4/48.3/50.8	10.2
flat/33.7/38.1/42.4/48.3/50.8	12.2
flat/33.7/38.1/42.4/48.3/50.8	14.2
flat/33.7/38.1/42.4/48.3/50.8	16.2



Materials: AISI304/AISI316 Surface: satin/mirror



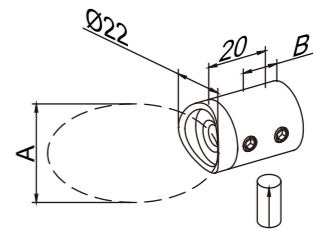
ARTICLE NO.81010.L

Bar Holder With Left Blind Hole

ΦA(mm)	B(mm)
flat/33.7/38.1/42.4/48.3/50.8	10.2
flat/33.7/38.1/42.4/48.3/50.8	12.2
flat/33.7/38.1/42.4/48.3/50.8	14.2
flat/33.7/38.1/42.4/48.3/50.8	16.2



Materials: AISI304/AISI316 Surface: satin/mirror



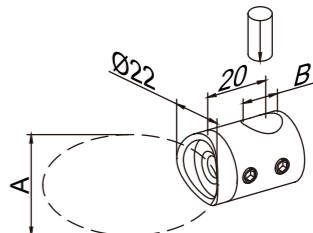
ARTICLE NO.81010.R

Bar Holder With Right Blind Hole

ΦA(mm)	B(mm)
flat/33.7/38.1/42.4/48.3/50.8	10.2
flat/33.7/38.1/42.4/48.3/50.8	12.2
flat/33.7/38.1/42.4/48.3/50.8	14.2
flat/33.7/38.1/42.4/48.3/50.8	16.2



Materials: AISI304/AISI316 Surface: satin/mirror



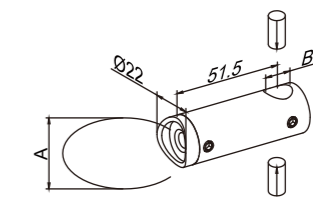
ARTICLE NO.81040

Cross Bar Holder With Through Hole

ΦA(mm)	B(mm)
flat/33.7/38.1/42.4/48.3/50.8	10.2
flat/33.7/38.1/42.4/48.3/50.8	12.2
flat/33.7/38.1/42.4/48.3/50.8	14.2



Materials: AISI304/AISI316 Surface: satin/mirror

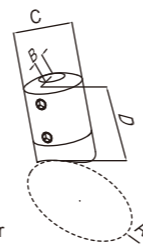


ARTICLE NO.81100

Cross Bar Holer



A(mm)	B(mm)	C(mm)	D(mm)
FLAT	10.2/12.2/14.2	27	35
33.7	10.2/12.2/14.2	27	35
38.1	10.2/12.2/14.2	27	35
42.4	10.2/12.2/14.2	27	35
48.3	10.2/12.2/14.2	27	35
50.8	10.2/12.2/14.2	27	35



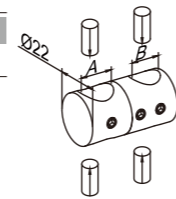
Materials: AISI304/AISI316 Surface: satin/mirror

ARTICLE NO.81050

Double Bar Holder



A(mm)	B(mm)
10.2	10.2
12.2	12.2
14.2	14.2



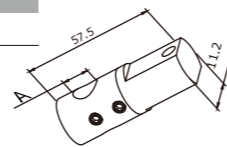
Materials: AISI304/AISI316 Surface: satin/mirror

ARTICLE NO.81060

Cross Bar Holder For Flat Bar Mounting



A(mm)
10.2
12.2
14.2



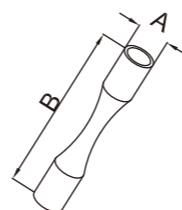
Materials: AISI304/AISI316 Surface: satin/mirror

ARTICLE NO.20050

Cross Bar Holder Bendable



A(mm)	B(mm)
10.2	85
12.2	85
14.2	85



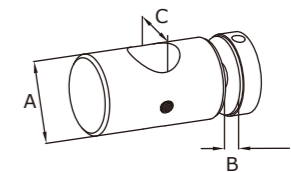
Materials: AISI304/AISI316 Surface: satin/mirror

ARTICLE NO.81070

Cross Bar Holder For Glass Mounting



A(mm)	B(mm)	C(mm)
25	6-12.76	12/14



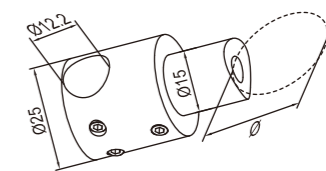
Materials: AISI304/AISI316 Surface: satin/mirror

ARTICLE NO.81080

Cross Bar Holder With Through Hole For Butting



Φ(mm)
33.7/38.1/42.4/48.3/50.8



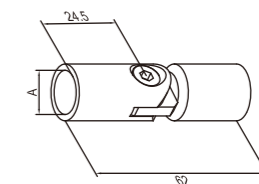
Materials: AISI304/AISI316 Surface: satin/mirror

ARTICLE NO.20220

Cross Bar Holder Adjustable 180°-90°



A(mm)
10.2
12.2
14.2



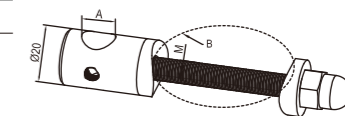
Materials: AISI304/AISI316 Surface: satin/mirror

ARTICLE NO.81240

Cross Bar Holder For Round Tube With Counter Plate



A(mm)	B(mm)
10.2	33.7/42.4/48.3
12.2	33.7/42.4/48.3
14.2	33.7/42.4/48.3



Materials: AISI304/AISI316 Surface: satin/mirror

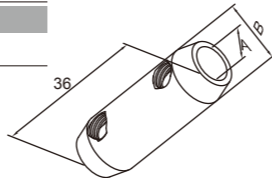
BAR HOLDER

SHEET HOLDER

ARTICLE NO.81111

Cross Bar Holder

A(mm)	B(mm)
10.2	16
12.2	18
14.2	20

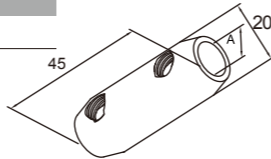


Materials: AISI304/AISI316 Surface: satin/mirror

ARTICLE NO.81110

Cross Bar Holder

A(mm)
10.2
12.2
14.2

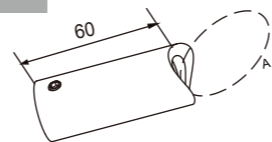


Materials: AISI304/AISI316 Surface: satin/mirror

ARTICLE NO.81310

Bar Holder

A(mm)
33.7
42.4

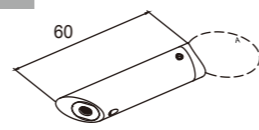


Materials: AISI304/AISI316 Surface: satin/mirror

ARTICLE NO.81300

Bar Holder

A(mm)
33.7
42.4

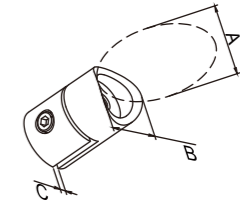


Materials: AISI304/AISI316 Surface: satin/mirror

ARTICLE NO.81200

Sheet Holder

A(mm)	B(mm)	C(mm)
FLAT	25/32	1-4
33.7	25/32	1-4
38.1	25/32	1-4
42.4	25/32	1-4
48.3	25/32	1-4
50.8	25/32	1-4



Materials: AISI304/AISI316 Surface: satin/mirror



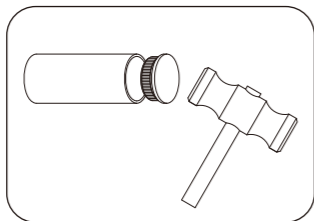


Materials: AISI304/AISI316/STEEL Surface: satin/mirror/raw

END CAP & BALL



Installation Diagram



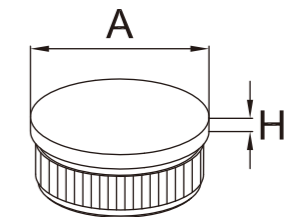
ARTICLE NO.60100

Flat End Cap, Solid

ΦA(mm)	H(mm)	Tube wall thickness(mm)
33.7	3	2.0-2.6
38.1	3	2.0-2.6
42.4	3	2.0-2.6
48.3	3	2.0-2.6
50.8	3	2.0-2.6



Materials: AISI304/AISI316 Surface: satin/mirror



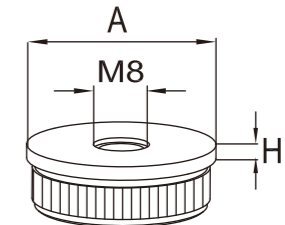
ARTICLE NO.60100.M8

Flat End Cap with thread, Solid

ΦA(mm)	H(mm)	Tube wall thickness(mm)
33.7	3	2.0-2.6
38.1	3	2.0-2.6
42.4	3	2.0-2.6
48.3	3	2.0-2.6
50.8	3	2.0-2.6



Materials: AISI304/AISI316 Surface: satin/mirror



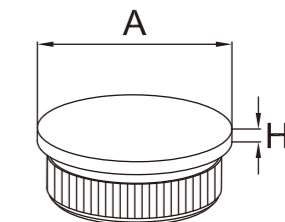
ARTICLE NO.60110

Arc End Cap, Solid

ΦA(mm)	H(mm)	Tube wall thickness(mm)
33.7	3	2.0-2.6
38.1	3	2.0-2.6
42.4	3	2.0-2.6
48.3	3	2.0-2.6
50.8	3	2.0-2.6



Materials: AISI304/AISI316 Surface: satin/mirror



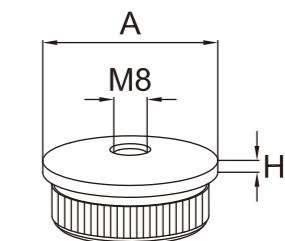
ARTICLE NO.60110.M8

Arc End Cap With Thread, Solid

ΦA(mm)	H(mm)	Tube wall thickness(mm)
33.7	3	2.0-2.6
38.1	3	2.0-2.6
42.4	3	2.0-2.6
48.3	3	2.0-2.6
50.8	3	2.0-2.6



Materials: AISI304/AISI316 Surface: satin/mirror





ARTICLE NO.60120 Arc End Cap, Solid

ΦA(mm)	H(mm)	Tube wall thickness(mm)
33.7	1.5	2.0-2.6
38.1	1.5	2.0-2.6
42.4	1.5	2.0-2.6
48.3	1.5	2.0-2.6
50.8	1.5	2.0-2.6

Materials: AISI304/AISI316 Surface: satin/mirror

ARTICLE NO.60130 Arc End Cap, Solid

ΦA(mm)	H(mm)	Tube wall thickness(mm)
33.7	5	2.0-2.6
38.1	5	2.0-2.6
42.4	5	2.0-2.6
48.3	5	2.0-2.6
50.8	5	2.0-2.6

Materials: AISI304/AISI316 Surface: satin/mirror

ARTICLE NO.60140 Domed End Cap, Solid

ΦA(mm)	H(mm)	Tube wall thickness(mm)
33.7	16.8	2.0-2.6
38.1	19	2.0-2.6
42.4	21.2	2.0-2.6
48.3	24.1	2.0-2.6
50.8	25.4	2.0-2.6

Materials: AISI304/AISI316 Surface: satin/mirror

ARTICLE NO.60140.M8 Domed End Cap with thread, Solid

ΦA(mm)	H(mm)	Tube wall thickness(mm)
33.7	16.8	2.0-2.6
38.1	19	2.0-2.6
42.4	21.2	2.0-2.6
48.3	24.1	2.0-2.6
50.8	25.4	2.0-2.6

Materials: AISI304/AISI316 Surface: satin/mirror

ARTICLE NO.60000 Flat End Cap, Hollow

ΦA(mm)	H(mm)	Tube wall thickness(mm)
33.7	3	2.0-2.6
38.1	3	2.0-2.6
42.4	3	2.0-2.6
48.3	3	2.0-2.6
50.8	3	2.0-2.6

Materials: AISI304/AISI316 Surface: satin/mirror

ARTICLE NO.60000.M8 Flat End Cap With Thread, Hollow

ΦA(mm)	H(mm)	Tube wall thickness(mm)
33.7	3	2.0-2.6
38.1	3	2.0-2.6
42.4	3	2.0-2.6
48.3	3	2.0-2.6
50.8	3	2.0-2.6

Materials: AISI304/AISI316 Surface: satin/mirror

ARTICLE NO.60010 Arc End Cap, Hollow

ΦA(mm)	H(mm)	Tube wall thickness(mm)
33.7	3	2.0-2.6
38.1	3	2.0-2.6
42.4	3	2.0-2.6
48.3	3	2.0-2.6
50.8	3	2.0-2.6

Materials: AISI304/AISI316 Surface: satin/mirror

ARTICLE NO.60010.M8 Arc End Cap with thread, Hollow

ΦA(mm)	H(mm)	Tube wall thickness(mm)
33.7	3	2.0-2.6
38.1	3	2.0-2.6
42.4	3	2.0-2.6
48.3	3	2.0-2.6
50.8	3	2.0-2.6

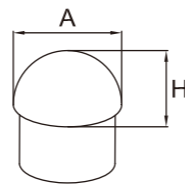
Materials: AISI304/AISI316 Surface: satin/mirror

ARTICLE NO.60020

End Cap, Hollow



ΦA(mm)	H(mm)	Tube wall thickness(mm)
33.7	16.8	2.0-2.6
38.1	19	2.0-2.6
42.4	21.2	2.0-2.6
48.3	24.1	2.0-2.6
50.8	25.4	2.0-2.6



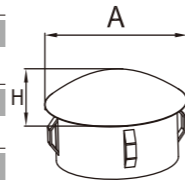
Materials: AISI304/AISI316 Surface: satin/mirror

ARTICLE NO.63000

End Cap, Hollow



A(mm)	H(mm)	Tube wall thickness(mm)
12.0	3.0	1.0
16.0	3.4	1.0-2.0
20.0	4.2	1.0-2.0
21.3	4.7	1.6-2.6
26.9	5.0	1.6-2.6
30.0	5.5	1.6-2.6
33.7	6.5	2.0-2.6
40.0	7.5	2.0-2.6
42.4	7.5	2.0-2.6
48.3	8.5	2.0-2.6
60.3	9.5	2.0-2.6
76.1	10.5	2.0-2.6
101.6	12.0	2.0-2.6



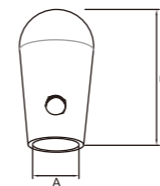
Materials: AISI304/AISI316 Surface: satin/mirror

ARTICLE NO.60400

Hollow End Cap



A(mm)	H(mm)
10.2	30
12.2	30
14.2	30



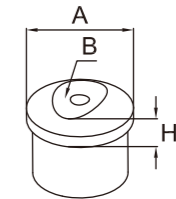
Materials: AISI304/AISI316 Surface: satin/mirror

ARTICLE NO.60310

Adapter For Round Tube



ΦA(mm)	ΦB(mm)	H(mm)
33.7	33.7	6
42.4	42.4	6
48.3	48.3	6



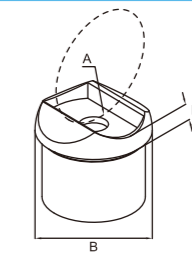
Materials: AISI304/AISI316 Surface: satin/mirror

ARTICLE NO.60300

Adapter For Round Tube



A(mm)	B(mm)	H(mm)
33.7	33.7	5
38.1	38.1	5
42.4	42.4	5
48.3	48.3	5
50.8	50.8	5



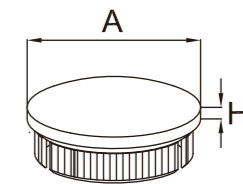
Materials: AISI304/AISI316 Surface: satin/mirror

ARTICLE NO.60030

End Cap, hollow



A(mm)	H(mm)	Tube wall thickness(mm)
33.7	2.5	2.0-2.6
42.4	2.5	2.0-2.6



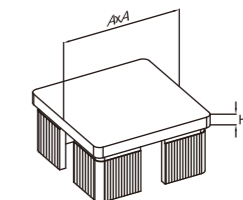
Materials: AISI304/AISI316 Surface: satin/mirror

ARTICLE NO.60210

Sqaure End Cap, Flat



A(mm)	H(mm)	Tube wall thickness(mm)
40	3.5	2.0-2.6



Materials: AISI304/AISI316 Surface: satin/mirror



ARTICLE NO.63000 End Cap Arc, Flexible

A(mm)	H(mm)	Tube wall thickness
33.7	2.5	1.8-2.2
33.7	2.5	2.5-2.9
42.4	2.5	1.8-2.2
42.4	2.5	2.5-2.9
48.3	2.5	1.8-2.2
48.3	2.5	2.5-2.9
60.3	2.5	1.8-2.2
60.3	2.5	2.5-2.9

Materials: Steel Surface: raw

ARTICLE NO.63010 End Cap Flat, Flexible

A(mm)	H(mm)	Tube wall thickness
33.7	2.5	1.8-2.2
33.7	2.5	2.5-2.9
42.4	2.5	1.8-2.2
42.4	2.5	2.5-2.9
48.3	2.5	1.8-2.2
48.3	2.5	2.5-2.9
60.3	2.5	1.8-2.2
60.3	2.5	2.5-2.9

Materials: Steel Surface: raw

ARTICLE NO.63000.M8 End Cap Arc With Thread, Flexible

A(mm)	H(mm)	Tube wall thickness
33.7	2.5	1.8-2.2
33.7	2.5	2.5-2.9
42.4	2.5	1.8-2.2
42.4	2.5	2.5-2.9
48.3	2.5	1.8-2.2
48.3	2.5	2.5-2.9
60.3	2.5	1.8-2.2
60.3	2.5	2.5-2.9

Materials: Steel Surface: raw

ARTICLE NO.63010.M8 End Cap Flat With Thread, Flexible

A(mm)	H(mm)	Tube wall thickness
33.7	2.5	1.8-2.2
33.7	2.5	2.5-2.9
42.4	2.5	1.8-2.2
42.4	2.5	2.5-2.9
48.3	2.5	1.8-2.2
48.3	2.5	2.5-2.9
60.3	2.5	1.8-2.2
60.3	2.5	2.5-2.9

Materials: Steel Surface: raw

ARTICLE NO.79120 Sphere

A(mm)	Tube wall thickness
30	2-2.5
33.7	2-2.5
40	2-2.5
42.4	2-2.5
50	2-2.5
60	2-2.5
70	2-2.5
80	2-2.5
90	2-2.5
100	2-2.5
120	2-2.5
150	2-2.5
200	2-2.5
300	2-2.5
500	2-2.5
1000	2-2.5

Materials: Steel/AISI304/AISI316 Surface: raw/satin/mirror

ARTICLE NO.79100 Half Sphere


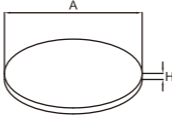
A(mm)	Tube wall thickness
30	2-2.5
33.7	2-2.5
40	2-2.5
42.4	2-2.5
50	2-2.5
60	2-2.5
70	2-2.5
80	2-2.5
90	2-2.5
100	2-2.5
120	2-2.5
150	2-2.5
200	2-2.5
300	2-2.5
500	2-2.5
1000	2-2.5

Materials: Steel/AISI304/AISI316 Surface: raw/satin/mirror



ARTICLE NO.60040 End Cap For Welding

ΦA(mm)	H(mm)	Tube wall thickness(mm)
33.7	5.5	2.0-2.6
42.4	5.5	2.0-2.6
48.3	5.5	2.0-2.6
60.3	5.5	2.0-2.6

Materials: AISI304/AISI316 Surface: satin/mirror

ARTICLE NO.61200 Stainless Steel Ball, With Thread, Solid


A(mm)	B
20	M6
25	M6
25	M8
30	M8
40	M8
50	M8




Materials: AISI304/AISI316/STEEL Surface: satin/mirror/raw

ARTICLE NO.61000 Stainless Steel Ball, With Through Hole, Solid

A(mm)	B(mm)
20	10.2
25	10.2
25	12.2
25	14.2
30	10.2
30	12.2
30	14.2




Materials: AISI304/AISI316/STEEL Surface: satin/mirror/raw

ARTICLE NO.61100 Stainless Steel Ball, With Half Hole, Solid

A(mm)	B(mm)
20	10.2
25	10.2
25	12.2
25	14.2
30	10.2
30	12.2
30	14.2




Materials: AISI304/AISI316/STEEL Surface: satin/mirror/raw



HANDRAIL SUPPORT

HANDRAIL SUPPORT



Materials: AISI304/AISI316

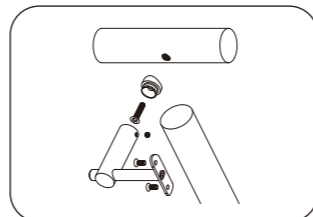
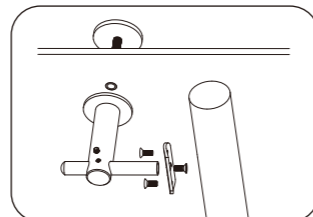
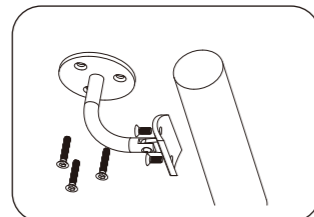


Surface: satin/mirror

HANDRAIL SUPPORT



Installation Diagram



ARTICLE NO.21000

Handrail Support 180°



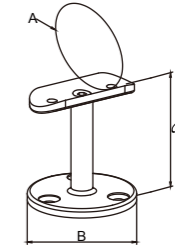
A(mm)	B(mm)	C(mm)
Flat	65	70
33.7	65	70
38.1	65	70
42.4	65	70
48.3	65	70
50.8	65	70



Materials: AISI304/AISI316



Surface: satin/mirror



ARTICLE NO.21010

Handrail Support 90°



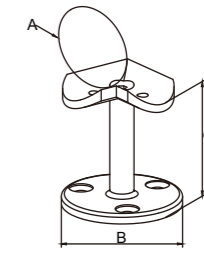
A(mm)	B(mm)	C(mm)
Flat	65	70
33.7	65	70
38.1	65	70
42.4	65	70
48.3	65	70
50.8	65	70



Materials: AISI304/AISI316



Surface: satin/mirror



ARTICLE NO.21020

Handrail Support 135°



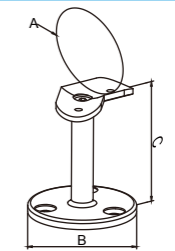
A(mm)	B(mm)	C(mm)
Flat	65	70
33.7	65	70
38.1	65	70
42.4	65	70
48.3	65	70
50.8	65	70



Materials: AISI304/AISI316



Surface: satin/mirror



ARTICLE NO.23000

Handrail Support



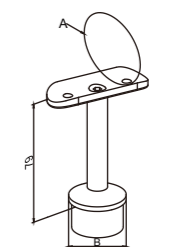
A(mm)	B(mm)
Flat	33.7/38.1/42.4/48.3/50.8
33.7	33.7/38.1/42.4/48.3/50.8
38.1	33.7/38.1/42.4/48.3/50.8
42.4	33.7/38.1/42.4/48.3/50.8
48.3	33.7/38.1/42.4/48.3/50.8
50.8	33.7/38.1/42.4/48.3/50.8



Materials: AISI304/AISI316



Surface: satin/mirror



HANDRAIL SUPPORT

HANDRAIL SUPPORT

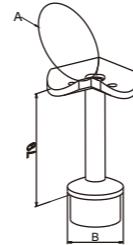
ARTICLE NO.23020

Handrail Support 90°



A(mm)	B(mm)
Flat	33.7/38.1/42.4/48.3/50.8
33.7	33.7/38.1/42.4/48.3/50.8
38.1	33.7/38.1/42.4/48.3/50.8
42.4	33.7/38.1/42.4/48.3/50.8
48.3	33.7/38.1/42.4/48.3/50.8
50.8	33.7/38.1/42.4/48.3/50.8

Materials: AISI304/AISI316 Surface: satin/mirror



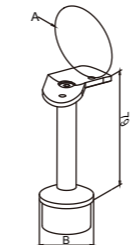
ARTICLE NO.23030

Handrail Support 135°



A(mm)	B(mm)
Flat	33.7/38.1/42.4/48.3/50.8
33.7	33.7/38.1/42.4/48.3/50.8
38.1	33.7/38.1/42.4/48.3/50.8
42.4	33.7/38.1/42.4/48.3/50.8
48.3	33.7/38.1/42.4/48.3/50.8
50.8	33.7/38.1/42.4/48.3/50.8

Materials: AISI304/AISI316 Surface: satin/mirror



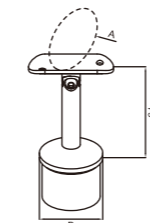
ARTICLE NO.23010

Handrail Support Adjustable



A(mm)	B(mm)
Flat	33.7/38.1/42.4/48.3/50.8
33.7	33.7/38.1/42.4/48.3/50.8
38.1	33.7/38.1/42.4/48.3/50.8
42.4	33.7/38.1/42.4/48.3/50.8
48.3	33.7/38.1/42.4/48.3/50.8
50.8	33.7/38.1/42.4/48.3/50.8

Materials: AISI304/AISI316 Surface: satin/mirror



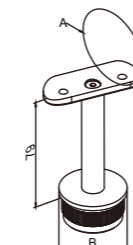
ARTICLE NO.23040

Handrail Support



A(mm)	B(mm)
Flat	33.7/38.1/42.4/48.3/50.8
33.7	33.7/38.1/42.4/48.3/50.8
38.1	33.7/38.1/42.4/48.3/50.8
42.4	33.7/38.1/42.4/48.3/50.8
48.3	33.7/38.1/42.4/48.3/50.8
50.8	33.7/38.1/42.4/48.3/50.8

Materials: AISI304/AISI316 Surface: satin/mirror



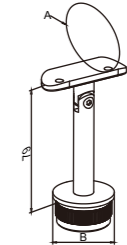
ARTICLE NO.23050

Handrail Support, Adjustable



A(mm)	B(mm)
Flat	33.7/38.1/42.4/48.3/50.8
33.7	33.7/38.1/42.4/48.3/50.8
38.1	33.7/38.1/42.4/48.3/50.8
42.4	33.7/38.1/42.4/48.3/50.8
48.3	33.7/38.1/42.4/48.3/50.8
50.8	33.7/38.1/42.4/48.3/50.8

Materials: AISI304/AISI316 Surface: satin/mirror



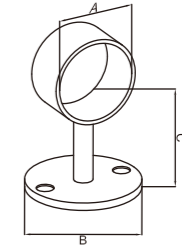
ARTICLE NO.21040

Handrail Support



A(mm)	B(mm)	C(mm)
33.7	65	68
38.1	65	68
42.4	65	68
48.3	65	68
50.8	65	68

Materials: AISI304/AISI316 Surface: satin/mirror



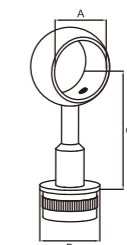
ARTICLE NO.23200

Handrail Support



A(mm)	B(mm)	C(mm)
33.7	33.7	90
38.1	38.1	90
42.4	42.4	90
48.3	48.3	90
50.8	50.8	90

Materials: AISI304/AISI316 Surface: satin/mirror



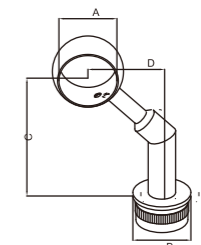
ARTICLE NO.23210

Handrail Support



A(mm)	B(mm)	C(mm)	D(mm)
33.7	33.7	102	54
38.1	38.1	102	54
42.4	42.4	102	54
48.3	48.3	102	54
50.8	50.8	102	54

Materials: AISI304/AISI316 Surface: satin/mirror



HANDRAIL SUPPORT

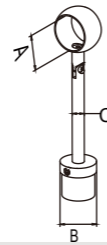
HANDRAIL SUPPORT

ARTICLE NO.23220

Centre Ring Holder, Adjustable



A(mm)	B(mm)	C(mm)
33.7	33.7	12/14
42.4	42.4	12/14
48.3	48.3	12/14



Materials:AISI304/AISI316



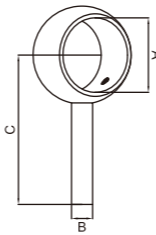
Surface:satin/mirror

ARTICLE NO.20350

Handrail Ring Holder



A(mm)	B(mm)	C(mm)
33.7	12/14	82
42.4	12/14	86



Materials:AISI304/AISI316



Surface:satin/mirror

ARTICLE NO.23060

Handrail Support, Adjustable



A(mm)	B(mm)
Flat	42.4
42.4	42.4
48.3	48.3



Materials:AISI304/AISI316



Surface:satin/mirror

ARTICLE NO.23070

Handrail Support



A(mm)	B(mm)
Flat	42.4
42.4	42.4
48.3	48.3



Materials:AISI304/AISI316



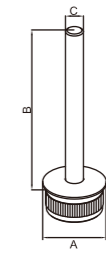
Surface:satin/mirror

ARTICLE NO.23100

Handrail Support



A(mm)	B(mm)	C(mm)
33.7	119	12/14
38.1	119	12/14
42.4	119	12/14
48.3	119	12/14
50.8	119	12/14



Materials:AISI304/AISI316



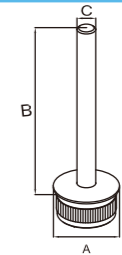
Surface:satin/mirror

ARTICLE NO.23110

Handrail Support



A(mm)	B(mm)	C(mm)
33.7	119	12/14
38.1	119	12/14
42.4	119	12/14
48.3	119	12/14
50.8	119	12/14



Materials:AISI304/AISI316



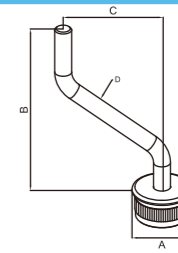
Surface:satin/mirror

ARTICLE NO.23120

Handrail Support, Offset



A(mm)	B(mm)	C(mm)	D(mm)
33.7	130	70	12/14
38.1	130	70	12/14
42.4	130	70	12/14
48.3	130	70	12/14
50.8	130	70	12/14



Materials:AISI304/AISI316



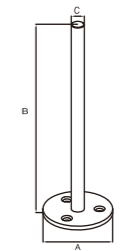
Surface:satin/mirror

ARTICLE NO.21030

Handrail Support



A(mm)	B(mm)	C(mm)
64	200	12/14



Materials:AISI304/AISI316



Surface:satin/mirror

HANDRAIL SUPPORT

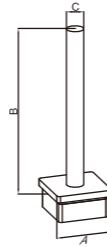
HANDRAIL SUPPORT

ARTICLE NO.23140

Handrail Support, Square Base



A(mm)	B(mm)	C(mm)
30	115	12/14
40	115	12/14
50	115	12/14



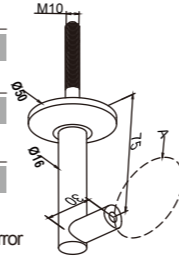
Materials: AISI304/AISI316 Surface: satin/mirror

ARTICLE NO.22120

Handrail Support



A(mm)
Flat
33.7
38.1
42.4
48.3
50.8



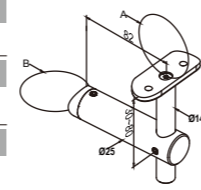
Materials: AISI304/AISI316 Surface: satin/mirror

ARTICLE NO.22000

Handrail Support For Side Mounting



A(mm)	B(mm)
Flat	Flat/33.7/38.1/42.4/48.3/50.8
33.7	Flat/33.7/38.1/42.4/48.3/50.8
38.1	Flat/33.7/38.1/42.4/48.3/50.8
42.4	Flat/33.7/38.1/42.4/48.3/50.8
48.3	Flat/33.7/38.1/42.4/48.3/50.8
50.8	Flat/33.7/38.1/42.4/48.3/50.8



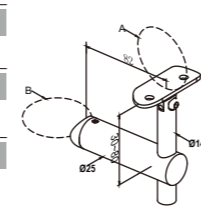
Materials: AISI304/AISI316 Surface: satin/mirror

ARTICLE NO.22010

Handrail Support For Side Mounting, Adjustable



A(mm)	B(mm)
Flat	Flat/33.7/38.1/42.4/48.3/50.8
33.7	Flat/33.7/38.1/42.4/48.3/50.8
38.1	Flat/33.7/38.1/42.4/48.3/50.8
42.4	Flat/33.7/38.1/42.4/48.3/50.8
48.3	Flat/33.7/38.1/42.4/48.3/50.8
50.8	Flat/33.7/38.1/42.4/48.3/50.8



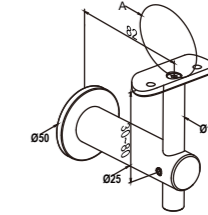
Materials: AISI304/AISI316 Surface: satin/mirror

ARTICLE NO.22100

Handrail Support For Wall Mounting



A(mm)
Flat
33.7
38.1
42.4
48.3
50.8



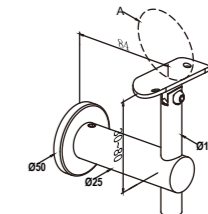
Materials: AISI304/AISI316 Surface: satin/mirror

ARTICLE NO.22110

Handrail Support For Wall Mounting, Adjustable



A(mm)
Flat
33.7
38.1
42.4
48.3
50.8



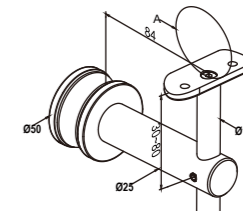
Materials: AISI304/AISI316 Surface: satin/mirror

ARTICLE NO.22200

Handrail Support For Side Mounting , With Glass Connector



A(mm)
Flat
33.7
38.1
42.4
48.3
50.8



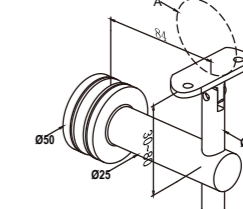
Materials: AISI304/AISI316 Surface: satin/mirror

ARTICLE NO.22210

Handrail Support For Side Mounting, Adjustable, With Glass Connector



A(mm)
Flat
33.7
38.1
42.4
48.3
50.8



Materials: AISI304/AISI316 Surface: satin/mirror

TUBE CONNECTOR

GLASS CLAMP

SQUARE SYSTEM

PLATE MOUNTING BRACKET/BASE COVER

CHANNEL TUBE SYSTEM

TUBES & BARS

END CAPS & BALLS

CABLE WIRE SYSTEM

BAR HOLDER

RAILING POST

RAILING ORNAMENTAL BARS

GATE HINGELOCKS & HANDLES

HANDRAIL SUPPORT

ARTICLE NO.21240

Handrail Support With Thread

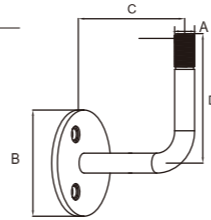
A(mm)	B(mm)	C(mm)	D(mm)
M12		75	84



Materials:AISI304/AISI316



Surface:satin/mirror



ARTICLE NO.21520

Handrail Support With Cover Stuck

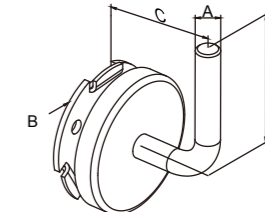
A(mm)	B(mm)	C(mm)	D(mm)
12	68	70	75



Materials:AISI304/AISI316



Surface:satin/mirror



ARTICLE NO.21500

Handrail Support With Thread, With Cover Stuck

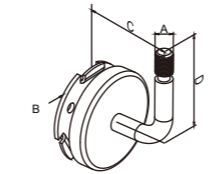
A(mm)	B(mm)	C(mm)	D(mm)
M12	58	77	70



Materials:AISI304/AISI316



Surface:satin/mirror



ARTICLE NO.21530

Handrail Support, With Cover Stuck

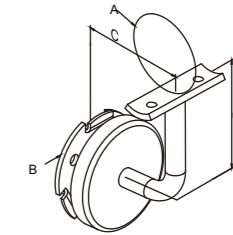
A(mm)	B(mm)	C(mm)	D(mm)
Flat	68	75	70
33.7	68	75	70
38.1	68	75	70
42.4	68	75	70
48.3	68	75	70
50.8	68	75	70



Materials:AISI304/AISI316



Surface:satin/mirror



ARTICLE NO.21510

Handrail Support, With Cover Stuck

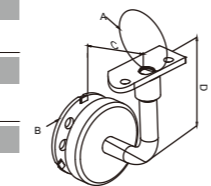
A(mm)	B(mm)	C(mm)	D(mm)
Flat	58	77	70
33.7	58	77	70
38.1	58	77	70
42.4	58	77	70
48.3	58	77	70
50.8	58	77	70



Materials:AISI304/AISI316



Surface:satin/mirror



ARTICLE NO.21320

Handrail Support

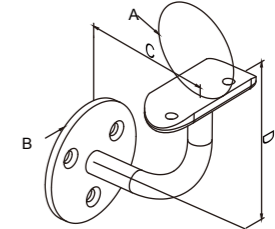
A(mm)	B(mm)	C(mm)	D(mm)
Flat	70	73	67
33.7	70	73	67
38.1	70	73	67
42.4	70	73	67
48.3	70	73	67
50.8	70	73	67



Materials:AISI304/AISI316



Surface:satin/mirror



ARTICLE NO.21540

Handrail Support, With Cover Stuck

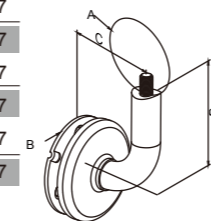
A(mm)	B(mm)	C(mm)	D(mm)
Flat	62	58	57
33.7	62	58	57
38.1	62	58	57
42.4	62	58	57
48.3	62	58	57
50.8	62	58	57



Materials:AISI304/AISI316



Surface:satin/mirror



ARTICLE NO.21220

Handrail Support With Adjustable Saddle

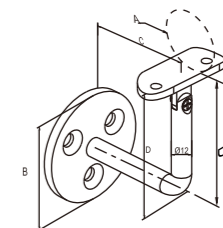
A(mm)	B(mm)	C(mm)	D(mm)
Flat	70	76	67
33.7	70	76	67
38.1	70	76	67
42.4	70	76	67
48.3	70	76	67
50.8	70	76	67



Materials:AISI304/AISI316

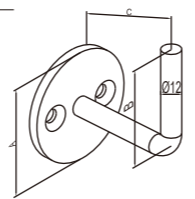


Surface:satin/mirror



ARTICLE NO.21100 Handrail Support For Welding

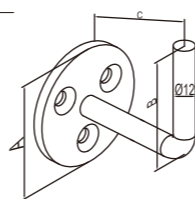
A(mm)	B(mm)	C(mm)
70	67	73



Materials: AISI304/AISI316 Surface: satin/mirror

ARTICLE NO.21200 Handrail Support For Welding

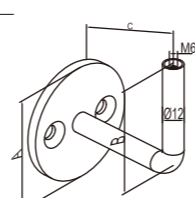
A(mm)	B(mm)	C(mm)
70	67	73



Materials: AISI304/AISI316 Surface: satin/mirror

ARTICLE NO.21100.M6 Handrail Support, With Internal Thread

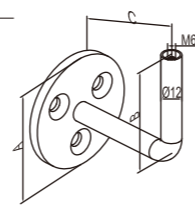
A(mm)	B(mm)	C(mm)
70	67	73



Materials: AISI304/AISI316 Surface: satin/mirror

ARTICLE NO.21200.M6 Handrail Support, With Internal Thread

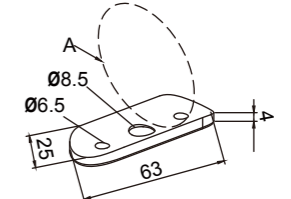
A(mm)	B(mm)	C(mm)
70	67	73



Materials: AISI304/AISI316 Surface: satin/mirror

ARTICLE NO.20300 Handrail Plate

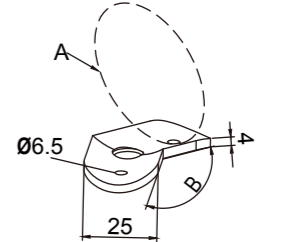
A(mm)
Flat
33.7
38.1
42.4
48.3
50.8



Materials: AISI304/AISI316 Surface: satin/mirror

ARTICLE NO. 20320/30 Handrail Plate

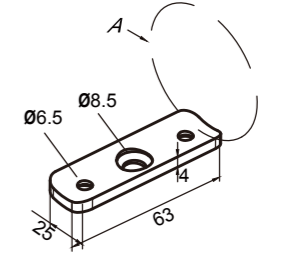
A(mm)	B(mm)
Flat	90°/135°
33.7	90°/135°
38.1	90°/135°
42.4	90°/135°
48.3	90°/135°
50.8	90°/135°



Materials: AISI304/AISI316 Surface: satin/mirror

ARTICLE NO.20310 Handrail Plate

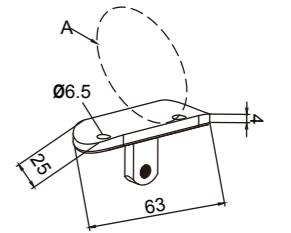
A(mm)
Flat
33.7
38.1
42.4
48.3
50.8



Materials: AISI304/AISI316 Surface: satin/mirror

ARTICLE NO.20340 Handrail Plate

A(mm)
Flat
33.7
38.1
42.4
48.3
50.8



Materials: AISI304/AISI316 Surface: satin/mirror

ARTICLE NO.20010 Handrail Support With Thread

A(mm)	B(mm)
12	90
12	110
14	90
14	110

Materials: AISI304/AISI316
Surface: satin/mirror

ARTICLE NO.20210 Handrail Support With Thread

A(mm)	B(mm)
12	48.5
12	49
14	48.5
14	49

Materials: AISI304/AISI316
Surface: satin/mirror

ARTICLE NO.20040 Handrail Support With Thread

A(mm)
12
14

Materials: AISI304/AISI316
Surface: satin/mirror

ARTICLE NO.20200 Handrail Support For Welding, With Internal Thread

A(mm)
12
14

Materials: AISI304/AISI316
Surface: satin/mirror

ARTICLE NO.20110 Handrail Support With Thread

A(mm)
12
14

Materials: AISI304/AISI316
Surface: satin/mirror

ARTICLE NO.20130 Handrail Support With Thread

A(mm)
12
14

Materials: AISI304/AISI316
Surface: satin/mirror

ARTICLE NO.20120 Handrail Support With Thread

A(mm)
12
14

Materials: AISI304/AISI316
Surface: satin/mirror

ARTICLE NO.20030 Handrail Support With Thread

A(mm)	B(mm)	C(mm)
12	78	M6/M8
12	90	M6/M8
12	110	M6/M8
12	130	M6/M8
14	78	M6/M8
14	90	M6/M8
14	110	M6/M8
14	130	M6/M8

Materials: AISI304/AISI316
Surface: satin/mirror

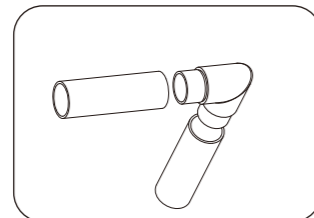


Materials: AISI304/AISI316 Surface: satin/mirror

TUBE CONNECTOR



Installation Diagram



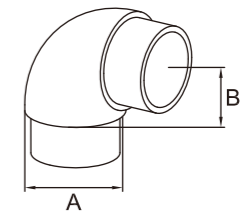
ARTICLE NO.52021

Tube Connector 90°



A(mm)	B(mm)
33.7	42
38.1	42
42.4	42
48.3	48
50.8	48

Materials: AISI304/AISI316 Surface: satin/mirror



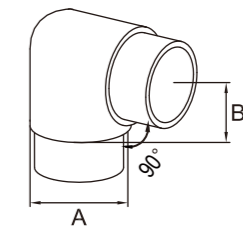
ARTICLE NO.52022

Tube Connector 90°



A(mm)	B(mm)
33.7	38
38.1	43
42.4	43
48.3	53
50.8	53

Materials: AISI304/AISI316 Surface: satin/mirror



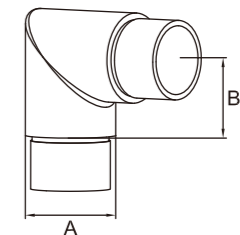
ARTICLE NO.52023

Tube Connector 90°



A(mm)	B(mm)
33.7	40
38.1	43
42.4	43
48.3	43
50.8	43

Materials: AISI304/AISI316 Surface: satin/mirror



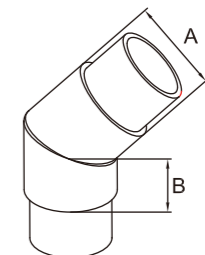
ARTICLE NO.52024

Tube Connector 135°



A(mm)	B(mm)
33.7	45
38.1	45
42.4	48
48.3	46
50.8	46

Materials: AISI304/AISI316 Surface: satin/mirror



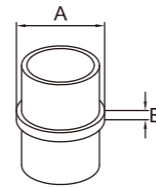
TUBE CONNECTOR

ARTICLE NO.52025

Tube Connector 180°



A(mm)	B(mm)
33.7	3.5
38.1	3
42.4	3
48.3	2
50.8	2



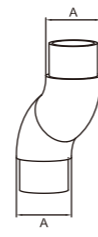
Materials: AISI304/AISI316 Surface: satin/mirror

ARTICLE NO.52026

Tube Connector, Infinitely Adjustable



A(mm)
33.7
38.1
42.4
48.3
50.8



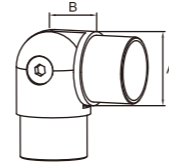
Materials: AISI304/AISI316 Surface: satin/mirror

ARTICLE NO.52027

Tube Connector With Joint



A(mm)	B(mm)
33.7	40
38.1	48
42.4	54
48.3	60
50.8	64



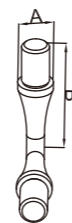
Materials: AISI304/AISI316 Surface: satin/mirror

ARTICLE NO.20140

Tube Connector



A(mm)	B(mm)
12	32
14	32



Materials: AISI304/AISI316 Surface: satin/mirror

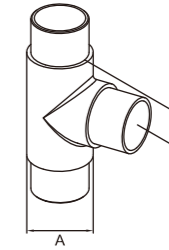
TUBE CONNECTOR

ARTICLE NO.52031

T-connector



A(mm)	B(mm)
33.7	40
38.1	49
42.4	49
48.3	56.5
50.8	57



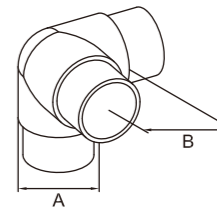
Materials: AISI304/AISI316 Surface: satin/mirror

ARTICLE NO.52032

Corner Connector 3-way



A(mm)	B(mm)
33.7	42.5
38.1	50
42.4	51.5
48.3	51.5
50.8	51.5



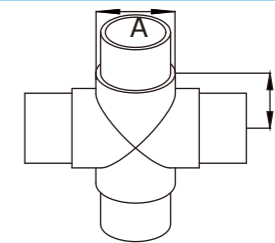
Materials: AISI304/AISI316 Surface: satin/mirror

ARTICLE NO.52041

Tube Connector 4-way



A(mm)	B(mm)
33.7	40
38.1	50
42.4	50
48.3	57
50.8	57



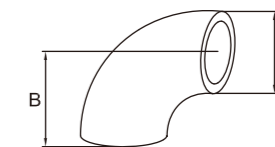
Materials: AISI304/AISI316 Surface: satin/mirror

ARTICLE NO.52121

Welding Elbow 90°



A(mm)	B(mm)
33.7	25
38.1	30
42.4	30
48.3	35
50.8	40



Materials: AISI304/AISI316 Surface: satin/mirror

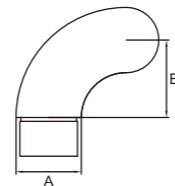
TUBE CONNECTOR

TUBE CONNECTOR

ARTICLE NO.52011 End Elbow Round



A(mm)	B(mm)
42.4	65
48.3	70

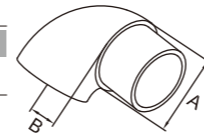


Materials: AISI304/AISI316 Surface: satin/mirror

ARTICLE NO.52012 End Elbow Flat



A(mm)	B(mm)
33.7	30
38.1	35
42.4	35
48.3	40
50.8	40

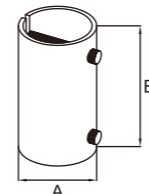


Materials: AISI304/AISI316 Surface: satin/mirror

ARTICLE NO.52123 Expansion Sleeve With Clamping Screws



A(mm)	B(mm)
33.7	70
38.1	70
42.4	70
48.3	70
50.8	70

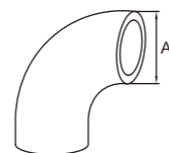


Materials: AISI304/AISI316 Surface: satin/mirror

ARTICLE NO.52122 Tube Connector



A(mm)
33.7
38.1
42.4
48.3
50.8

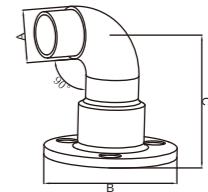


Materials: AISI304/AISI316 Surface: satin/mirror

ARTICLE NO.52014 Tube Connector With Flange Plate



A(mm)	B(mm)	C(mm)
42.4	84	82
48.3	84	82

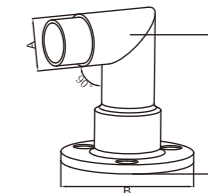


Materials: AISI304/AISI316 Surface: satin/mirror

ARTICLE NO.52013 Tube Connector With Flange Plate



A(mm)	B(mm)	C(mm)
42.4	84	82
48.3	84	82

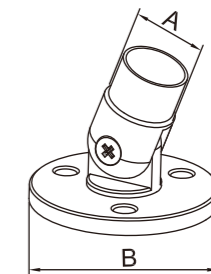


Materials: AISI304/AISI316 Surface: satin/mirror

ARTICLE NO.52016 Tube Connector With Flange Plate, Flexible



A(mm)	B(mm)
33.7	80
38.1	80
42.4	80
48.3	80
50.8	80



Materials: AISI304/AISI316 Surface: satin/mirror

PLATE/MOUNTING BRACKET BASE COVER

PLATE



Materials: AISI304/AISI316 Surface: satin/mirror/raw

PLATE/MOUNTING BRACKET BASE COVER



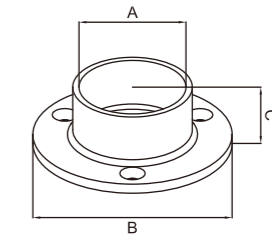
ARTICLE NO.31000

Anchor Plate



A(mm)	B(mm)
21.3	60
26.9	65
33.7	70
42.4	80
48.3	90
60.3	115

Materials: AISI304/AISI316 Surface: satin/mirror



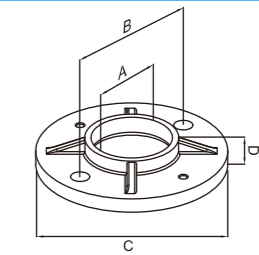
ARTICLE NO.31020

Anchor Plate



A(mm)	B(mm)	C(mm)	D(mm)
33.7	62	80	16
42.4	76	100	16
48.3	94	120	16
60.3	94	120	16

Materials: AISI304/AISI316 Surface: raw



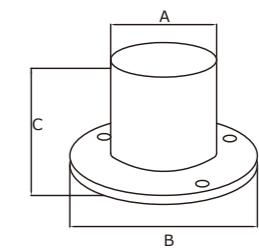
ARTICLE NO.31010

Wall & Bottom Plate



A(mm)	B(mm)	C(mm)
29.7	80	46
38.4	80	46
38.4	120	66
44.3	120	66

Materials: AISI304/AISI316 Surface: satin/mirror



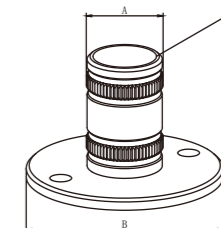
ARTICLE NO.31030

Wall & Bottom Plate



A(mm)	B(mm)	C(mm)
33.7	100	70
42.4	100	70
48.3	120	70
50.8	120	70

Materials: AISI304/AISI316 Surface: satin/mirror



MOUNTING BRACKET

MOUNTING BRACKET



TUBE CONNECTOR

GLASS CLAMP

SQUARE SYSTEM

PLATE/MOUNTING BRACKET
BASE COVER

CHANNEL TUBE SYSTEM

TUBES & BARS

END CAPS & BALLS

CABLE WIRE SYSTEM

BAR HOLDER

RAILING POST

RAILING ORNAMENTAL BARS

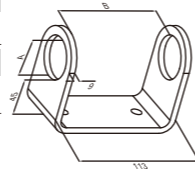
GATE HINGELOCKS & HANDLES

HANDRAIL SUPPORT

ARTICLE NO.24110

Post Wall Mount

A(mm)	B(mm)
33.7	118
38.1	118
42.4	118
48.3	118
50.8	118

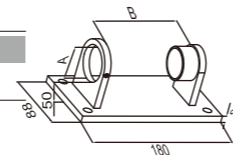


Materials: AISI304/AISI316 Surface: satin/mirror

ARTICLE NO.24120

Post Wall Mount

A(mm)	B(mm)
33.7	114
38.1	114
42.4	114
48.3	114
50.8	114

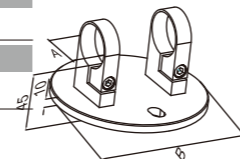


Materials: AISI304/AISI316 Surface: satin/mirror

ARTICLE NO.24130

Post Wall Mount With Clamps

A(mm)	B(mm)
33.7	120/150
38.1	120/150
42.4	120/150
48.3	120/150
50.8	120/150

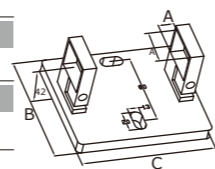


Materials: AISI304/AISI316 Surface: satin/mirror

ARTICLE NO.24200

Post Wall Mount With Clamps

A(mm)	B(mm)	C(mm)
33.7	70	100
38.1	70	100
42.4	70	100
48.3	70	100
50.8	70	100

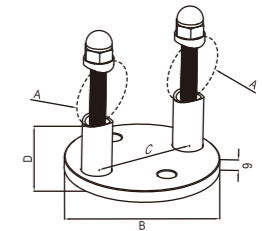


Materials: AISI304/AISI316 Surface: satin/mirror

ARTICLE NO.24150

Post Wall Mount

A(mm)	B(mm)	C(mm)	D(mm)
33.7	100	55	50
38.1	100	55	50
42.4	100	55	50
48.3	100	55	50
50.8	100	55	50



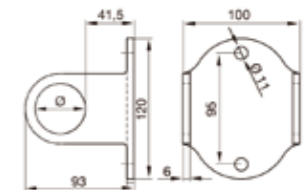
Materials: AISI304/AISI316 Surface: satin/mirror

ARTICLE NO.24160

Post Wall Mount

Φ(mm)

33.7
38.1
42.4
48.3
50.8

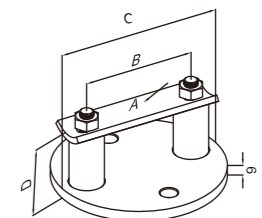


Materials: AISI304/AISI316 Surface: satin/mirror

ARTICLE NO.24140

Post Wall Mount

A(mm)	B(mm)
33.7	28
42.4	28
48.3	28
33.7	48
42.4	48
48.3	48

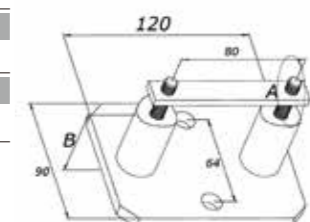


Materials: AISI304/AISI316 Surface: satin/mirror

ARTICLE NO.24170

Post Wall Mount

A(mm)	B(mm)	C(mm)	D(mm)
33.7	70	100	45/70
38.1	70	100	45/70
42.4	70	100	45/70
48.3	70	100	45/70
50.8	70	100	45/70



Materials: AISI304/AISI316 Surface: satin/mirror

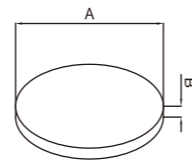
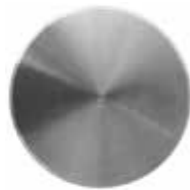


ARTICLE NO.32000

Plate

A(mm) B(mm)

33	4
42	4
48	4
60	4
70	6
80	6
100	6



Materials:AISI304/AISI316



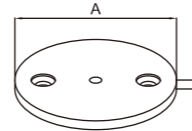
Surface:satin/mirror

ARTICLE NO.32010

Plate

A(mm) B(mm)

70	10
80	10
100	10
120	10



Materials:AISI304/AISI316



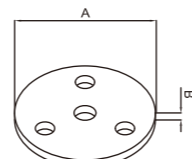
Surface:satin/mirror

ARTICLE NO.32020

Plate

A(mm) B(mm)

70	6
80	6
100	6



Materials:AISI304/AISI316



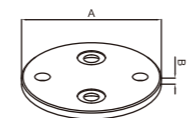
Surface:satin/mirror

ARTICLE NO.32030

Plate

A(mm) B(mm)

100	6
120	8
150	10



Materials:AISI304/AISI316



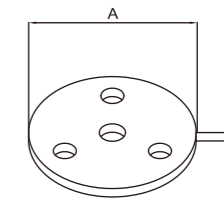
Surface:satin/mirror

ARTICLE NO.32021

Plate

A(mm) B(mm)

70	6
80	6
100	6



Materials:AISI304/AISI316



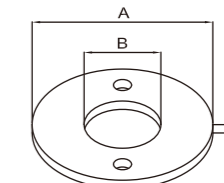
Surface:satin/mirror

ARTICLE NO.32040

Plate

A(mm) B(mm) C(mm)

100	34	68/10
100	43	68/10
120	49	68/10



Materials:AISI304/AISI316



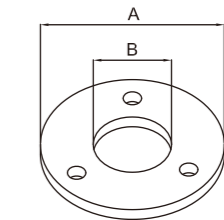
Surface:satin/mirror

ARTICLE NO.32050

Plate

A(mm) B(mm) C(mm)

100	34	68/10
100	43	68/10
120	49	68/10
120	61	68/10



Materials:AISI304/AISI316



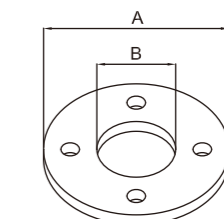
Surface:satin/mirror

ARTICLE NO.32060

Plate

A(mm) B(mm) C(mm)

80	34	68/10
100	43	68/10
120	49	68/10



Materials:AISI304/AISI316



Surface:satin/mirror

ARTICLE NO.32120

Plate

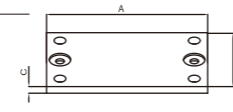
A(mm)	B(mm)	C(mm)
150	80	6



Materials:AISI304/AISI316



Surface:satin/mirror



ARTICLE NO.32130

Plate

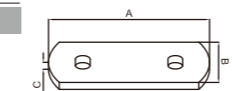
A(mm)	B(mm)	C(mm)
120	60	6
120	80	6



Materials:AISI304/AISI316



Surface:satin/mirror



ARTICLE NO.32140

Plate

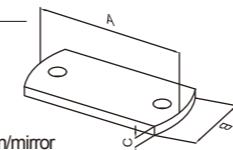
A(mm)	B(mm)	C(mm)
100	50	6



Materials:AISI304/AISI316



Surface:satin/mirror



ARTICLE NO.32230

Plate

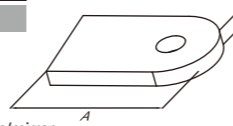
A(mm)	B(mm)
64	4
70	5



Materials:AISI304/AISI316



Surface:satin/mirror



ARTICLE NO.32220

Plate

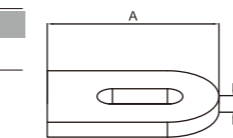
A(mm)	B(mm)
100	8
120	10
150	10



Materials:AISI304/AISI316



Surface:satin/mirror



ARTICLE NO.30000

Round Base Cover

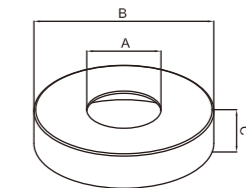
A(mm)	B(mm)	C(mm)
12.5/14.5	45	10
12.5/20.5	62	15
10.2/12.2/14.2	70	12.5
12.5/14.5/34.5/43	76	12
34.5/43	82	15
43	105	22.5
34.5/43/49	105	25
43/49/61	125	18
49	125	22.5



Materials:AISI304/AISI316



Surface:satin/mirror



ARTICLE NO.30010

Round Base Cover

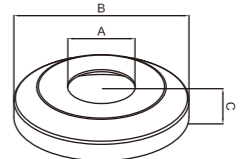
A(mm)	B(mm)	C(mm)
42.4	110	22



Materials:AISI304/AISI316



Surface:satin/mirror



ARTICLE NO.30100

Square Base Cover

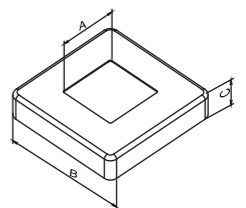
A(mm)	B(mm)	C(mm)
40.5	96	28
47	96	28



Materials:AISI304/AISI316



Surface:satin/mirror



ARTICLE NO.30300

Oval Base Cover

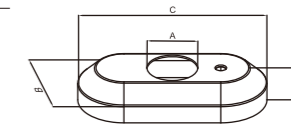
A(mm)	B(mm)	C(mm)	D(mm)
44.3	81.5	154.5	25.5



Materials:AISI304/AISI316



Surface:satin/mirror



GATE HINGE LOCK & HANDLE

Materials: STEEL/AISI304/AISI316 Surface: galvanizing/raw/satin

GATE HINGE LOCK & HANDLE



GATE HINGE



ARTICLE NO.90010.1

Steel Door Hinge

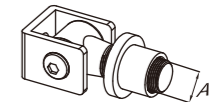


A

M12
M14
M16
M20
M24

Materials: STEEL

Surface: galvanizing



ARTICLE NO.90100.1

Steel Door Hinge

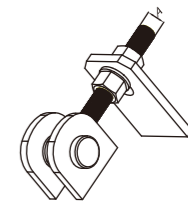


A

M12
M16
M20

Materials: STEEL

Surface: galvanizing



ARTICLE NO.90200.1

Steel Door Hinge

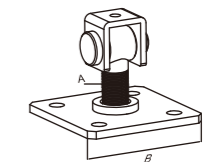


A B(mm)

M20 100
M24 100

Materials: STEEL

Surface: galvanizing



ARTICLE NO.90020.1

Steel Door Hinge

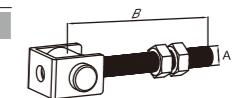


A B(mm)

M12 100
M16 150
M20 160
M24 160

Materials: STEEL

Surface: galvanizing



ARTICLE NO.90010.2 **Stainless Steel Door Hinge**

A

M12
M14
M16
M20
M24

Materials: AISI304/AISI316 Surface: raw/satin

ARTICLE NO.90100.2 **Stainless Steel Door Hinge**

A

M12
M16
M20

Materials: AISI304/AISI316 Surface: raw/satin

ARTICLE NO.90200.2 **Stainless Steel Door Hinge**

A	B(mm)
M20	100
M24	100

Materials: AISI304/AISI316 Surface: raw/satin

ARTICLE NO.90020.2 **Stainless Steel Door Hinge**

A	B(mm)
M12	100
M16	150
M20	160
M24	160

Materials: AISI304/AISI316 Surface: raw/satin

ARTICLE NO.92000 **Locks**

Box Section(mm)

25x25
30x30
40x40

Materials: AISI304/AISI316/STEEL Surface: raw/satin

ARTICLE NO.91010 **Handles**

Length(mm) x Width(mm)

150x110

Materials: ZINC ALLOY Surface: coating

ARTICLE NO.91000 **Handles**

Length(mm) x Width(mm)

138x104

Materials: ALU ALLOY Surface: coating

ARTICLE NO.91020 **Handles**

Length(mm) x Width(mm)

145x139

Materials: STEEL Surface: coating