

# BAILI®



## Product Catalog



## Company profile

GUANGZHOU WEIDI COMMODITY CO.,LTD was founded in 2002. The company is devoted to the development of personal shaving products, specializing in producing and marketing various kinds of shaving related products. Our company is located in Guangzhou City, Tianhe district ,where close to the "canton fair" exhibition center, and only 40 minutes from the Baiyun airport. Currently our factory covers an area of 5000 square meters, 5 production lines, with over 100 production workers and 28 experienced technical personnel.

Since the company was founded, we have adhered to the "GET BAILI GET PERFECT" as a business philosophy and the spirit of enterprise. We are committed to product



research and development that provides an enjoyable shaving experience for every customer. After 11 years of hard work, our independent brand "BAILI" has grown to be a famous brand in the personal care industry. Our main products covering system razors, double edge razors, disposable razors, razor blades and shaving foams that meet the requirements of different users. All of BAILI products are specifically designed inhouse, and many are patented. The individualized and fashionable designs are made to the highest quality standards and are offered at a reasonable price to our customers.

**BAILI**<sup>®</sup>

**BAILI**<sup>®</sup> Razor

Regal Series



## Regal Series



BR501



Pivoting head, progressive five blades imported from ASR, guard trimmer blade for hard to shave areas like sideburns and under nose.



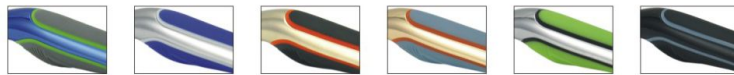
Lubricating strip provides a smooth glide, plus a wide soft rubber guard bar help to lift the beard and provide a close and comfortable shave.



Push button release for ease of changing the blade cartridge.



Ergonomically designed handle, combines a precision metal alloy with a soft rubber grip that fits better in your hand, and a nice heavy weight feel providing a fantastic shaving experience with better control.



Color



Compatible with 3 blade cartridge

# BAILI<sup>®</sup>

## Regal5



## 5 Blades +1 Trimmer Blade



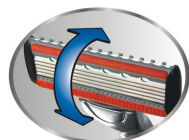
Top one trimmer blade built in for hard to shave areas, like sideburns, under nose, more thoughtful and keep offering you a gentleman shave.

Even more, blade special equipped with cleaning hole, make the clean more easy and flexible.

Aloe vera, vitamin E lubrication strip reduce skin sensitivity, effective protect and moisturize your skin to provide a smooth glide.

Progressive 5 thinner blades, made by ASR Company, super stainless steel blade with diamond platinum coated cutting edge, extremely sharp and durable, provides a superior clean and comfortable shave.

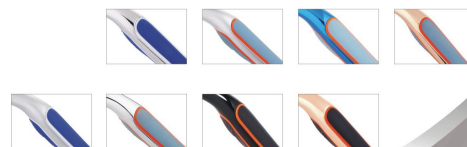
Pivoted head, can flexible glide along the contours of your face while shaving for a close and comfortable shave.



Bottom widen soft rubber guard bar with comb line, helps to bring the hair up beforehand to shave deep, prevents the cuts and nicks

Unique and patented push button release design for ease of changing the blade cartridge.

Ergonomically designed handle, combines a precision metal alloy with TPE soft rubber grip that fits better in your hand, plus a nice heavy weight feel providing a fantastic shaving experience with better control.



Color



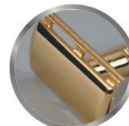
21

### Double Edge Series



BR173

Color



Metal alloy handle with a brilliant chrome electroplated finish that provides a noble and elegant look.



Contoured nonslip handle makes shaving safer and easy to control.



BR133

Color



Brilliant chrome electroplated finish that is as bright as a mirror.



Plastic contoured antiskid handle for better control and use.



BR135

Color



One-piece double edge razor, click to open and easily change the blade.



Plastic contoured antiskid simple form handle.

# BAILI®



rose gold



silver

**Individual Appearance**  
Classic and magnificent ,  
feel good in hand,  
everything just under control.

**Innovate Patent**  
Innovative and patented design.

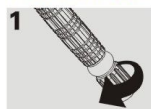
**Security upgrade**  
Breakthrough and enclosed type  
razor head, full protection of shaving  
without unexpected cuts.

**Precision Crafted Performance**  
high quality alloy material with elegant  
chrome plated, perfect combination of  
traditional & modern technology.

**Fantasic shaving experience**  
micro-comb lines for beard brush,  
reduces resistance between beards,  
make it more smooth shaving.

**BR179**

## How to install the blade?



1. Rotate the bottom toward counter-clockwise direction.



2. Open razor head, and put "BAILI" blades in.



3. Rotate the bottom toward clockwise direction, and close razor head.

## Perfect Shaving Guidance

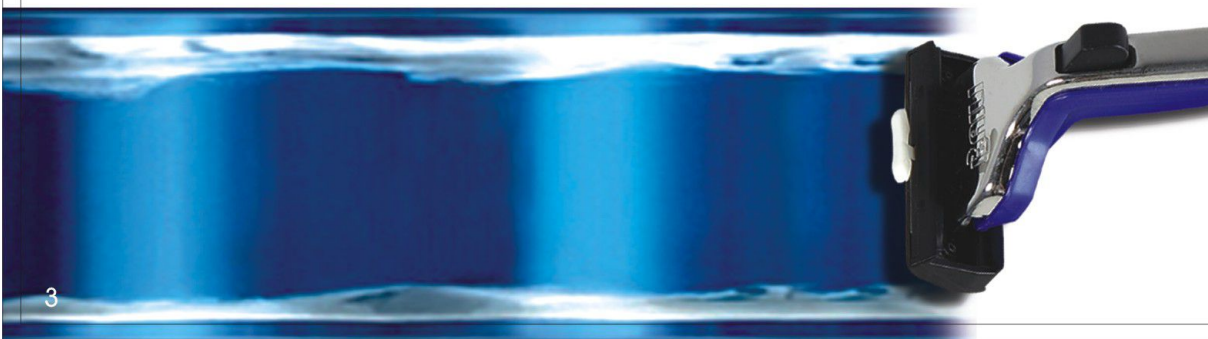
1. Clean and keep the face wet under warm water.
2. Apply shaving cream on face to soften the beard.
3. Shaving from top to chin, then go reversely.
4. Wash blade with clean running water, keep it sharp.
5. Nourish skin with face care products.
6. Clean the razor after shaving, keep it in dry and ventilated environment.

Product name: Twist open shaver  
(Elegant model)  
Item number: BL521  
Specification: Razor holder+Blade+Stand  
Standard code: Q/WDRY1  
Manufacturer: Guangzhou Weidi Commodity Co.,Ltd  
Address: 2nd floor No.32 Xinchongkou West, Chebei,  
Tianhe District Guangzhou, China, 510660  
Tel: 020-82170369



# BAILI® Razor

Newvtor Series

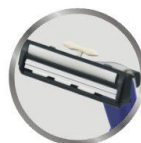


## Newvtor Series



BR109

Color



Imported stainless steel twin blades with a pivoting head that includes an aloe strip and clean system for a clean and comfortable shave.



Ergonomically designed plastic handle with metal head.



BR309



Advanced super stainless steel triple blades with a pivoting head for a close and comfortable shave.



Mini orange release button for ease of changing the blade cartridge.



Fashionable soft rubber handle design.

# BAILI® Razor

Fluxus Series



5

## Fluxus Series



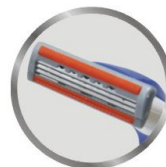
BR139



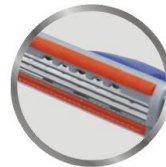
Color



BR307



Imported super stainless steel triple blades with pivoting head for a superior close and comfortable clean shave.



Lubricating aloe strip reduces irritation, protects and moisturizes your skin.



Push button release for ease of changing the blade cartridge.



Comfortable ergonomic rubber handle designed to provide better grip and control.



7

### Supra Series



BR181



Color



Imported stainless steel twin blades with pivoting head for a close and comfortable shave.



Lubricating aloe strip provides a smooth glide with a special press clean system that keeps your blade clean and durable.



Electroplated bright metal head.



Ergonomically designed soft rubber antiskid handle that provides a safe and controlled shave.



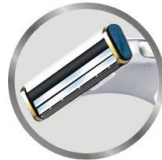


9

### Perfect Series



BR301



Twin blades made from a superior hardened stainless steel that assembled into a rotary head designed to provide a clean and comfortable shave.



High precision weighted metal alloy handle with strips of nonslip rubber designed to provide the perfectly controlled shave.



BR333



Progressive super stainless steel triple blades with rotary head for a close, sharp, and comfortable shave.



High precision weighted metal alloy handle with strips of nonslip rubber designed to provide the perfectly controlled shave.

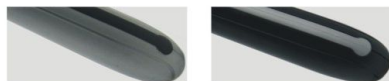


11

## Runwe Series



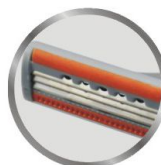
BR321



Color



Advanced design super stainless steel triple blades with a pivoting head that provides a superior close and comfortable shave.



Lubricating aloe strip reduces irritation, protects and moisturizes your face while you shave.



Mini button release for ease of changing the blade cartridge.



Comfortable ergonomic antiskid plastic handle for better grip and control.



13

### Fixedness Series



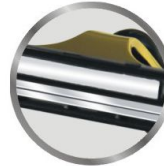
BR105



Color



Imported stainless steel twin blades, fixed head design for a safety and clean shave.



Lubricating aloe strip reduces irritation, protects and moisturizes your skin.



High quality gold electroplated head adds a look of elegance.



Plastic contoured antiskid handle provides better grip and control.



BR107



Color

# BAILI® Razor

Pivoting Series



15

## Pivoting Series



BR101



Imported stainless steel twin blades with pivoting head for a close and comfortable shave.



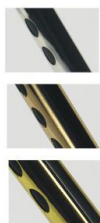
Lubricating aloe strip offers you a smooth glide with a special press clean system for easily clean out residue to keep your blade clean and durable.



Press button release for ease of changing the blade cartridge.



Uniquely designed fashionable electroplated metal handle with a bright mirror finish and antiskid hole for a better grip.



Color

16



17

### Senfug Series

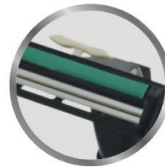


BR103

Color



Imported stainless steel twin blades with pivoting head for a close and comfortable shave.



Lubricating aloe strip provides a smooth glide with a special press clean system that keeps your blade clean and durable.



Electroplated bright metal head.



Ergonomically designed plastic antiskid handle that provides a safe and controlled shave.

# BAILI® Razor

Brisk Series



19

## Brisk Series



BR201



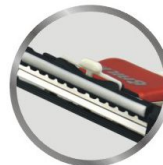
Color



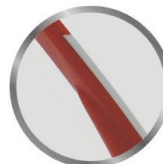
Twin micro blades that easily glide and remove the stubble in those hard to shave areas providing a cleaner shave.



Handle is specially designed with a lock system that allows the head to pivot or lock in a fixed position. You decide the type of shave you prefer.



Lubricating aloe strip provides a smooth glide. The press clean system keeps your blade clean and durable.



Ergonomically designed fashionable plastic handle.



23

### Disposable Razor



QB1



Imported S.S twin blades+pivoted head  
+aloe strip+clean system, flexible and fashion.



Color



QB2



Imported S.S twin blades+fixed  
head+aloe strip, stable and  
safety.



Color



QB3



Imported S.S twin blades+fixed head  
+aloe strip+ clean system + rubber handle,  
fashion and individualize.



Color



QB4



S.S twin blades+fixed  
head, simple and cheap.



Color



# BAILI® Razor

Ladies Series



## Barise

Ladies Razor

25

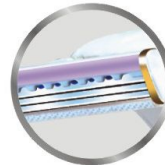
### Ladies Series



BRG363



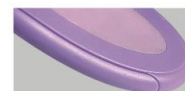
Progressive super stainless steel triple blades with a pivoting head for a close, sharp, and comfortable shave.



Aloe with vitamin E lubricating strip reduces irritation while shaving as it protects and moisturizes your skin.



Ergonomically designed rubber and plastic handle that is smart and light for a flexible controlled shave.



Color

26





BP003  
(5pcs/tuck)



BP001  
(5pcs/tuck)



BP007  
(5pcs/tuck)



BP005  
(10pcs/tuck)



WBF906  
(225g Foam)



WBF901



WBF902  
(210g Foam)



WBF903



WBF916  
(15g Foam)



WBF911  
(50g Foam)



WBF912



WBF913



WBF914  
(8ml, 10ml, 15ml Cream)



WBF915  
(30ml Cream)



**GUANGZHOU WEIDI COMMODITY CO., LTD.**  
Address: 2nd floor No.32 West Xinchong Kou, Chebei,  
Tianhe District, Guangzhou, Guangdong, China .  
Tel: +8620-82170369 Fax: +8620-82170362  
E-mail: [baili@ballishaver.com](mailto:baili@ballishaver.com) [fairylee@ballishaver.cn](mailto:fairylee@ballishaver.cn)  
**[www.ballishaver.com](http://www.ballishaver.com) [www.ballishaver.cn](http://www.ballishaver.cn)**