

# YOUNGMET

INNOVATION LED

SHENZHEN FEIHE ELECTRONICS CO., LTD.  
深圳市飞鹤电子有限公司  
<http://han-ind.en.alibaba.com> [www.szyangm.com](http://www.szyangm.com)

# YOUNGMET

INNOVATION LED

TOP BRAND  
OF INTELLIGENT  
TABLE LAMP  
2017



Factory Add.: 3/F, Block 3, Hongfa Innovation Park, Jiu'wei, Xi'xiang, Bao'an, Shenzhen, China 深圳市宝安区西乡九围宏发创新园3栋

Tel: 86-755-33653822 Mail: [sales03@szhazhong.com](mailto:sales03@szhazhong.com) [sales04@szhazhong.com](mailto:sales04@szhazhong.com) [sales09@szhazhong.com](mailto:sales09@szhazhong.com)

# YOUNGMET

INNOVATION LED

[www.szyangm.com](http://www.szyangm.com)

I here , i come , i can ! - Professional LED table lamp manufacturer .

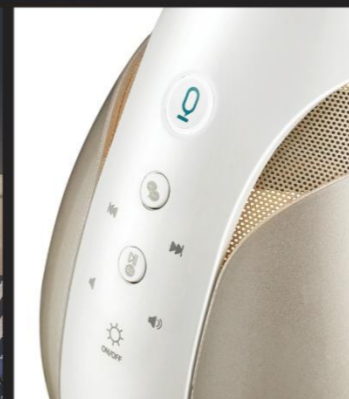
## ORIGINAL DESIGN



2017  
NEW



THE  
LIGHT  
ART





# COMPANY INTRODUCTION

## SHENZHEN FEIHE ELECTRONICS CO.,LTD.

### FEIHE ABSOLUTE ADVANTAGES:

Real factory: we have design patent for all the LED table lamps in our factory  
 Certificates: ISO9001, CE, ROHS, GS, KC, ETL  
 Experience: 8 years professional developing, producing and exporting experience for LED home lighting products  
 Own brand: we have our well-known LED table lamps brand "YOUNGMIND" in China  
 ODM&OEM: we can offer ODM&OEM service for all customers. You offer us idea, we offer you a nice new product.  
 Our GOAL:  
 Transcending all the competitors and becoming the best strategic cooperation partner for more foreign investors by providing the highest quality at the cheapest price!  
 OUR CORE VALUE:  
 Benefit customer, staff and society!

### FEIHE INTRODUCTION:

Our company started in 1998 from an industrial design and development Co., after 4-year development, then expanded to researching and developing electronics and LED lighting products since 2002. The dramatic growing speed and increasing customers enabled us to establish a new LED home lighting products factory named Shenzhen Feihe Electronics Co., Ltd. in 2006 with 3000 square meters area and 300 employees. Then we officially started LED home lighting products researching, developing and manufacturing. We regularly produce 200,000PCS LED table lamps per month. Our R&D team is professional in researching and developing customer's ODM models. We can develop average 6-8 new models every year. The prototype sample should be 15-20 days, the mould opening time is 40 days, the mass production time is 30 days after sample confirmation. Our punctual lead time for sample is 1-3days, for order is 10-15 days.

### FEIHE QUALITY ASSURANCE IN EACH PHASE:

1. 100% inspection for all incoming materials by our IQC (Incoming Quality Control) department, if the deficient rate is over our standard 2%, we will return the defective materials to our suppliers for rework, if less than 2%, we will change the defective parts by new qualified materials.
2. Before on-line production, all the appearance and functions of the PCB boards must be 100% checked by our QC department.
3. Semi-finished goods must be 100% inspected by our QC (quality control) department, if any defective part, we will repair it and then return it to production line again.
4. IPQC(Input process quality control) must patrol inspecting during production process.
5. Completed sets must be 100% checked by the QC department, after that all the lamps start 30 minutes aging test.
6. After the aging test, QC department will 100% check all the goods, then starting packing.
7. After packing, QA department will start sampling inspection, then we will inform customers to arrange the inspection date of the goods.
8. Warranty card is packed together with product in the color box for the after-sale quality service.



U18

Intelligent wake-up lamp



Bluetooth	V4.0+EDR	Output power	8W	Adapter	12V 1.5A
Searching name of bluetooth	U18	SNR	75dB	The parameters of speaker	2.5in 4Ω10W
Bluetooth transmission distance	≥10M	Power of wake-up light	10W	Degree of distortion	≤10%

**Functions:**

- Touch button , easy to operate
- APP control
- RGB light
- Bluetooth speaker
- Regularly remind
- Wake-up light
- Night light
- FM radio
- Clock
- Sleep function

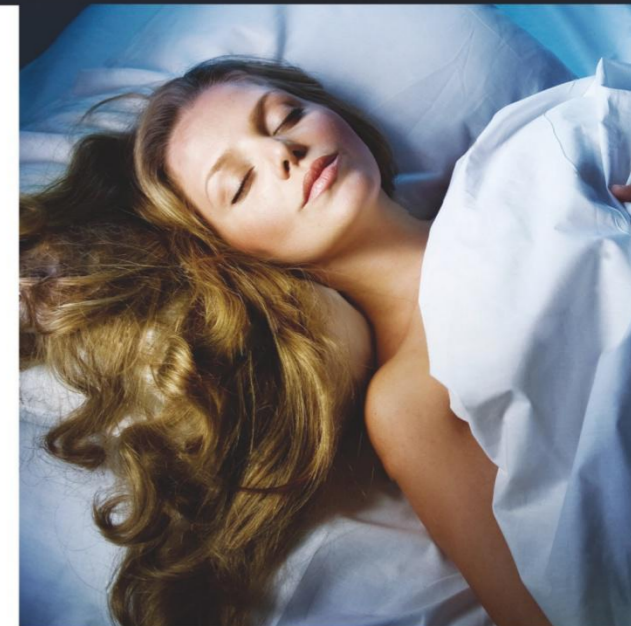
A3

Wake-up lamp with bluetooth speaker



**Functions:**

- Touch button , easy to operate
- APP control
- RGB light
- Bluetooth speaker
- Regularly remind
- Wake-up light
- Night light
- Clock
- Sleep function





## U5

Smart reading lamp-e Bean is a intelligent reading lamp combined with voice control, eye protection, education, accompany.



Lamp Power: 10W	Working temperature: 0°C-40°C
Speaker Power: 8W	Connection Type: WIFI 24G
SNR: ≥75db	Supported Platforms: ios&Andrord
Distortion: ≤10%	Dimmable: 3-grade brightness
Luminous Flux: >370LM	Night light color temperature: 3000k±300k
Power supply: 12V/1.5A	Reading light color temperature: 5500k±500k

### Functions:

- Wireless WiFi, straight on the Cloud Resource Library
- Massive genuine resources, arbitrary search by the voice
- Weather checking / time checking / life information , all are readily available
- Poetry / Wikipedia / math / English / Music
- Relaxed chat/we-chat

S8

Folding sucker lamp



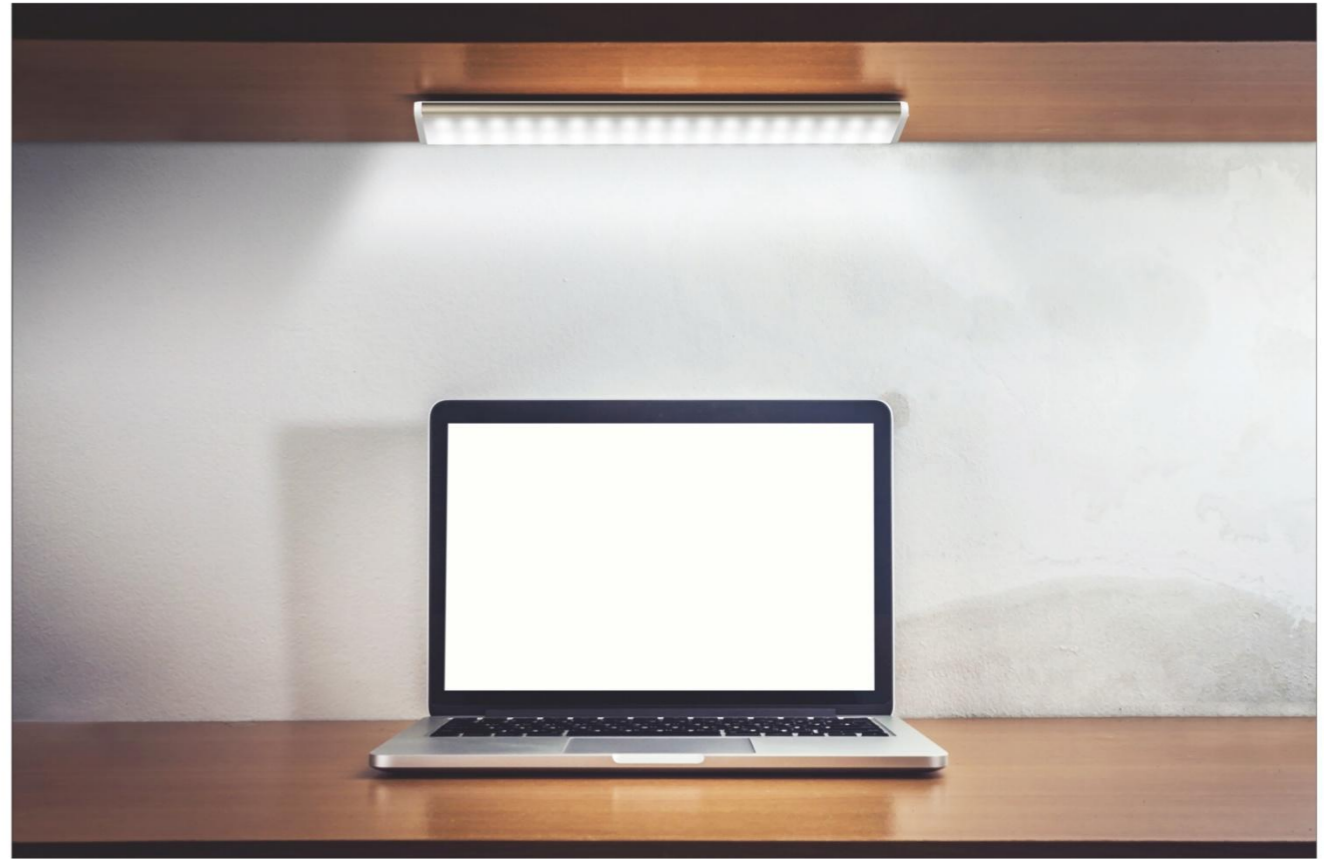
**Functions:**

- High sensitivity 3-grade brightness touch dimmer
- Hardware lamp post+ABS
- Sucker design on base

Luminous flux	> 200Lm	Power	5W
Adaptor	DC5V/1A	CRI	> 80
The type of LED	2835	Built-in battery capacity	Without
Color temperature	5500K±500K	Materials	ABS+hardware
illuminance	> 700Lux 30CM	Light effect	Backlit
The number of LED	36PCS	Control mode	Touch

S7

Multifunction sucker lamp with magnetic



Luminous flux	> 200Lm	Power	5W
Adaptor	DC5V/1A	CRI	> 80
The type of LED	2835	Built-in battery capacity	High capacity battery
Color temperature	5500K±500K	Materials	ABS+Rubber
Illuminance	> 700Lux 30CM	Light effect	Backlit
The number of LED	36PCS	Control mode	Button

#### Functions

- \* High sensitivity 3-grade brightness touch dimmer
- \* Combination of desk lamp and night light
- \* To meet kinds of demands of lighting because of metal tube
- \* Sucker design on base
- \* High capacity battery





U21

Stone style aroma diffuser



#### Function parameter

- power: 10W
- power adapter: 24V 0.6A
- capacity: 250ml
- the use of time: continuous spray for 5 hours
- using area: 12-20 square meters
- Color light: RGB color light, automatic loop mode and monochrome mode
- timing function: 30 minutes, 60 minutes, 180 minutes, automatic shutdown of water shortage
- Material: PP anti-corrosion & environmental protection material shell

U20

## Aroma diffuser with flame atmosphere



### Function parameter

- Capacity:150ml
- Using time:in large Atomization Amount 4hour, in small Atomization Amount 7.5hour
- Atomization Amount:large Atomization Amount and small Atomization amount total two level
- Colorful RGB :RGB light,Automatically cycle changing color mode and one fixed color mode
- Torch lamp :like the real flame burning ,switch on/off function
- Setting time :30minutes 、 60minutes 、 180minutes 、 auto off function if the diffuser lack of water
- Material : PP ,anti-corrosion environmental protection material shell
- Power adapter : 24V 0.6A
- Power :12W
- Working area :12-20m<sup>2</sup>



U19

Flame atmosphere lamp



Functions

- \* Low colour temperature, the effect more realistic
- \* Waterproof design
- \* High integration of IC, the effect more realistic
- \* Built-in battery, efficient, long battery life

Adaptor	DC5V/1A	CRI	> 80
The type of LED	3528	Built-in battery capacity	7.4V 2000ma/h
The number of LED	96	Materials	ABS+hardware
Control mode	Button	Light effect	Backlit



A1

Flame atmosphere bluetooth speaker



Bluetooth	V4.2	Signal to noise ratio	> 75dB
Bluetooth transmission distance	≥10M	Built-in high efficiency lithium battery	2000mA
Output power	5W	Speaker parameters	2inches 4Q5W
Distortion rate	≤10%	Frequency	100-20KHz

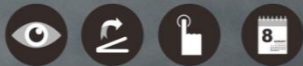
Functions

- \* Touch button, easy to operate
- \* Torch function
- \* Bluetooth audio function



## U2

Imitation leather LED eye-protection



Color Temperature	5000-6000K
Power supply	DC5V/1A
Power	5W
CRI	>80Ra
Lamp brightness	>200Lm
Material	ABS+RUBBER

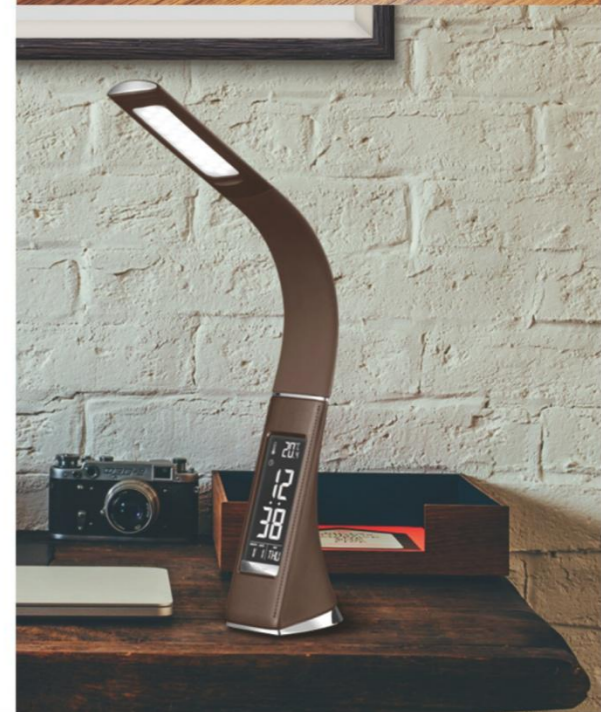
### Functions:

- \* Plastic imitation leather texture design  
the combination of art and taste of a new generation of products
- \* 3-grade brightness touch dimmer
- \* LED nixie tube display calendar (time, date, month and alarm) and temperature
- \* Alarm clock with snooze function



Imitation leather LED  
eye-protection desk lamp

## U2C





## U13

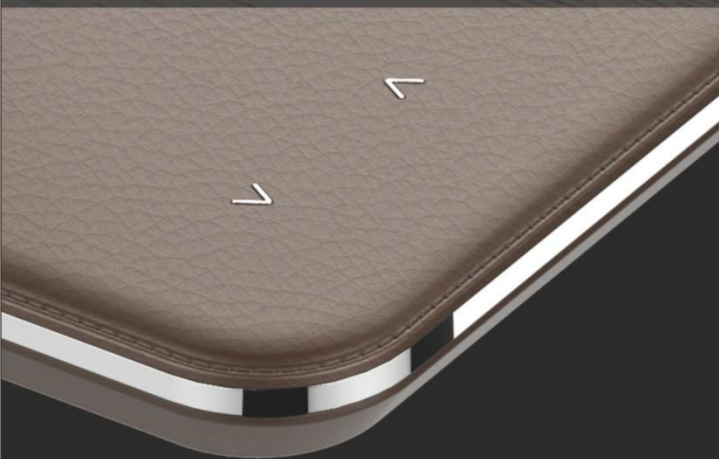
Imitation leather LED eye-protection desk lamp



Color Temperature	3000k±300k 4200k±400k 5500k±500k
Power supply	DC12V/1A
Power	7W
CRI	>80Ra
Lamp brightness	>300Lm
Material	ABS+RUBBER

### Functions:

- \* Plastic imitation leather texture design the combination of art and taste of a new generation of products
- \* 3-grade brightness touch dimmer
- \* LED nixie tube display calendar (time, date, month and alarm) and temperature
- \* Alarm clock with snooze function



## U3

Flex LED table lamp with RGB base

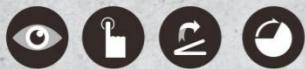


Dimming Type	3-grade brightness touch dimmer
Brightness	> 90Lm
Color temperature	> 80
Lamp illumination	30CM 340Lux
Power supply	DC5V/1A
Max wattage	3W

### Functions:

- Living color light creates the romantic atmosphere for parties and a soft sleeping light effect
- 3-grade brightness touch dimmer to be fit for any demand of lighting
- Innovative design, combine the living color light and table lamp, more fashionable, convenient and useful
- Flexible goose neck lamp arm, can light for different angle as your requirement
- High sensitivity 3-grade brightness touch dimmer, easy for operation

**U4** Desk lamp with brushed metal housing effect



Dimming Type	5-grade brightness touch dimmer
Brightness	> 400Lm
Color temperature	3000k±300k 4200k±400k 5500k±500k
Lamp illumination	30CM 1500 Lux
Power supply	DC12V/1.5A
Power	9W

**Functions:**

- Three lighting modes to choose.
- 60 seconds countdown lights out.
- Large area light technology, more comfortable for drawing or reading.



**T18** Desk lamp with brushed metal housing effect



Luminous flux	> 400Lm	Power	9W
Adaptor	DC12V/1.5A	CRI	> 80
The type of LED	2835	Built-in battery capacity	Without
Color temperature	5500K±500K 4200K±400K 3000K±280K	Materials	ABS+hardware
Illuminance	> 1200Lux 30CM	Light effect	Side light
The number of LED	54PCS	Control mode	Touch

**Functions:**

- High sensitivity 5-grade brightness touch dimmer
- Three kinds of color temperature
- Hardware lamp post+ABS
- Large current USB output





## U6

With calendar pen holder LED table lamp



Dimming type	3-grade brightness touch dimmer
Lamp brightness	> 240 Lm
CRI	> 80
Lamp illumination	30CM 1000Lux
Power supply	DC 5V/1A
Power	6W

### Functions:

- Touch switch , 3 kinds of eye-protection brightness optional
- LED display ( temperature , time ,date ) alarm clock
- Multi-function pen holder base , can plug pen all place other stationery inside



## J5

With calendar pen holder LED table lamp



### Functions:

- Touch switch , 3 kinds of eye-protection brightness optional
- Multi-function pen holder base





## U10

LED table lamp with multi-color base



Color Temperature	5000-6000K
Power supply	DC12V/1A
Power	8W
CRI	>80Ra
Lamp brightness	>400Lm
Material	ABS+RUBBER

### Functions:

- ★Using 3-grade high sensitive touch control
- ★Fashion styling ,combine lamps with colorful light
- ★Not only can choose a particular color ,but also can be recycled
- ★To meet kinds of demands of lighting because of metal tube



## U9

LED table lamp with blue-tooth speaker



Dimming type	4-grade brightness touch dimmer
Power supply	DC12V/1.5A
Power	18W
CRI	>80
Lamp brightness	>350Lm

### Functions:

- High bright led
- Blue-tooth speaker function
- Long working life
- New idea design ,modern style
- Energy saving ,low power consumption







## M2A

LED table lamp with  
blue-tooth speaker



Speaker	2inch 4Ω
SNR	75dB
Distortion	≤10%
Bluetooth mode	Bluetooth V4.0
Frequency Range	100Hz---20KHz
Power	5W+5W

### Functions:

- ★ High bright led
- ★ Aluminium alloy design , compact structure
- ★ Blue-tooth speaker function
- ★ Long working life
- ★ New idea design ,modern style
- ★ Energy saving ,low power consumption



## M6

LED table lamp with blue-tooth speaker



Speaker	1.5inch 4Ω
SNR	75dB
Distortion	<1%
Bluetooth mode	Bluetooth V2.1
Frequency Range	100Hz---20KHz
Power	3.5W+ 3.5 W

### Functions:

- ★ High bright led
- ★ Blue-tooth speaker function
- ★ Long working life
- ★ New idea design ,modern style
- ★ Energy saving ,low power consumption



## U17

LED table lamp with Wireless charger



Color Temperature	5000-6000K
Power supply	DC12V/1.5A
Power	8W
CRI	>80Ra
Lamp brightness	>400Lm
Material	ABS+RUBBER

### Functions:

- ★ High bright led
- ★ 3-grade brightness touch dimmer



## U15

LED table lamp with Wireless charger



### Functions:

- ★ High bright led
- ★ 3-grade brightness touch dimmer



# H1

LED table lamp with APP control



Dimming type	5-grade brightness touch dimmer
Power supply	DC12V/1A
Power	12W
CRI	>80
Lamp brightness	>450Lm

**Functions:**

- ★Using high sensitive touch control and voice control and APP control , suitable for all kinds of people
- ★Combine lamp with calendar
- ★With cold light - warm light - natural light , five dimmer to suitable for all kinds of lighting demands
- ★Calendar with alarm + temperature + week function



# H2

Multifunctional LED table lamp with colorful light



Dimming type	3-grade brightness touch dimmer
Power supply	DC12V/1A
Power	12W
CRI	>80
Lamp brightness	>450Lm

**Functions:**

- ★Using 3-grade high sensitive touch control
- ★Fashion styling ,combine lamps with colorful light
- ★Not only can choose a particular color ,but also can be recycled
- ★To meet kinds of demands of lighting because of metal tube

## T6

DC12V flexible arm LED table lamp  
with touch dimmer and 5-C light modes



Dimming Type	5-grade brightness touch dimmer
Lamp brightness	> 400Lm
Color temperature	> 80
Lamp illumination	30CM 1200Lux
Power supply	DC12V/1A
Power	10W

### Functions:

- ★ 5-grade brightness touch dimmer
- ★ With study mode, relax mode and natural mode
- ★ Flexible, free angle adjustable, the lamp arm up-down and left-right adjustable freely
- ★ DC12V power supply



## U1

Wireless Colorful night light



### Functions:

- ★ Wireless charger, dual LED indicator
- ★ Cool light night light
- ★ Atmosphere lamp

Wireless charging output	5V/1A
Charging conversion rate	75%
Wattage of white light	6W
Wattage of RGB light	1.8W
Input	12V/1A
Gross weight	506g
Size of lamp	207*65mm



TOP BRAND OF INTELLIGENT TABLE LAMP

Led Table Lamp



T5

LED desk lamp with magic colorful RGB

Power: 12W

Lamp brightness: >400Lm

LED type: 4014/5050

Color box : 20.5\*17\*40CM

CTN box : 54.5\*44\*42.5CM6PCS/CTN

Functions:

- \* RGB LED light creating romantic atmosphere, more easy to fall sleep.
- \* Innovative design, colorful lamp along with led desk lamp, much more popular, convenience, functional
- \* Soft lighting mode, no glare, relax your eyes.
- \* Low consumption, low decay, super long working life.

Q8

LED table lamp with magic colorful RGB light

Power: 5W

Lamp brightness: >200Lm

LED type: 4014

Color box : 20.5\*17\*29CM

CTN box : 43\*36\*60.5CM8PCS/CTN

Functions:

- \* Using three-grade high sensitive touch control methods.
- \* Combining the table lamp with colorful mood lighting.
- \* Not only can choose a particular color, but also can be recycled.
- \* To meet kinds of demands of lighting because of metal tube.

TOP BRAND OF INTELLIGENT TABLE LAMP

Led Table Lamp



T7

DC12V foldable & rotatable LED table lamp with 3-C light modes, touch dimmer and LED nixie tube calendar display

Power: 10W

Lamp brightness: >450Lm

LED type: 5730

Color box : 46\*8.8\*19.6CM

CTN box : 48\*38\*42.5CM 8PCS/CTN

Functions:

- \* 3-color temperature selectable:cold, warm and cold & warm mode.
- \* With study mode, relax mode and natural mode.
- \* 5-grade brightness touch dimmer.
- \* LED nixie tube display calendar(time,date,month and alarm) and temperature.
- \* Alarm clock with snooze function.

T11

DC12V foldable & rotatable LED table lamp with 3-C light modes and touch dimmer

Power: 10W

Lamp brightness: >450Lm

LED type: 5730

Color box : 47\*20\*9CM

CTN box : 49\*38\*42CM8PCS/CTN

Functions:

- \* 3-color temperature selectable:cold,warm and cold & warm mode
- \* With study mode, relax mode and natural mode
- \* 5-grade brightness touch dimmer
- \* With 5V power output port,can charge for mobile, mp3, or other DC5V electronic devices
- \* Foldable, free angle adjustable, lamp head up-down adjustable 180 degree, lamp arm left-right rotatable 360 degree and forward adjustable 90 degree.

TOP BRAND OF INTELLIGENT TABLE LAMP

Led Table Lamp



S6

Detachable ultrathin aluminum table lamp with 3-C light modes.

Power: 10W

Lamp brightness: >400Lm

LED type: 5730

Color box : 42\*18.5\*7CM

CTN box : 45\*38\*40.5CM10PCS/CTN

Functions:

- \* Upscale aluminum alloy lamp head.
- \* Lamp arm and base detachable, make the color box compression.
- \* Ultra-thin base.
- \* 3-color temperature light modes:cold, warm and cold & warm mode
- \* 5-grade brightness touch dimmer
- \* With ON/OFF touch key
- \* With study mode, relax mode and natural mode



S1

Ultra-thin base panel light source table lamp with HD VA LCD calendar display

Power: 10W

Lamp brightness: >350Lm

LED type: 4014

Color box : 45.5\*7.0\*20.5CM

CTN box : 47.5\*30.5\*43.5CM8PCS/CTN

Functions:

- \* LED panel light source, creating soft light effect
- \* Ultra-thin base.
- \* VA LCD white-black display calendar and temperature.
- \* Alarm clock with snooze function.
- \* 5-grade brightness touch dimmer.

TOP BRAND OF INTELLIGENT TABLE LAMP

Led Table Lamp



T8

DC12V foldable & rotatable LED table lamp with 3-C light modes and touch dimmer

Power: 10W

Lamp brightness: >450Lm

LED type: 5730

Color box : 47\*20\*9CM

CTN box : 49\*38\*42CM 8PCS/CTN

Functions:

- \* 3-color temperature selectable:cold, warm and cold & warm mode.
- \* With study mode, relax mode and natural mode.
- \* 5-grade brightness touch dimmer.
- \* With 5V power output port, can charge for mobile, mp3, or other DC5V electronic devices.
- \* Foldable, free angle adjustable, lamp head up-down adjustable 180 degree, lamp arm left-right rotatable 360 degree and forward adjustable 90 degree.



T10

DC12V COB LED panel light table lamp with touch sliding dimmer

Power: 7W

Lamp brightness: >350Lm

Color box : 16\*11.5\*34CM

CTN box : 48.5\*34.5\*37CM 8PCS/CTN

Functions:

- \* COB LED panel light source, creating an uniform and soft light effect.
- \* Cold white light effect.
- \* 7-grade brightness touch and slide dimmer.
- \* With touch dimmer and ON/OFF touch key.
- \* DC12V power supply
- \* Flexible lamp arm

TOP BRAND OF INTELLIGENT TABLE LAMP

Led Table Lamp



T3

DC12V flexible touch dimmer table lamp with RGB color light

Power: 5W

Lamp brightness: >200Lm

LED type: 2835

Color box : 20.5\*16\*27CM

CTN box : 43\*50.5\*56.5CM 12PCS/CTN

Functions:

- \* Globoid base built-in red, green, blue LED bulbs to make the colorful living color light effect
- \* Touch the color bar on the base to change the color of the living color light
- \* 5000-6000K white light effect for the lamp
- \* Flexible goose neck lamp arm, can light for different angle as your requirement
- \* 3-grade brightness touch dimmer



Q10

Edgelit LED table lamp with colorful light

Power: 5W

Lamp brightness: >200Lm

LED type: 2835

Is being designed

Functions:

- \* Using 3-grade high sensitive touch control
- \* Fashion styling ,combine lamps with colorful light
- \* Not only can choose a particular color ,but also can be recycled
- \* To meet kinds of demands of lighting because of metal tube

TOP BRAND OF INTELLIGENT TABLE LAMP

Led Table Lamp



Q9

Backlit LED table lamp

Power: 5W

Lamp brightness: >200Lm

LED type: 2835

Is being designed

Functions:

- \* 3-grade brightness touch dimmer
- \* Using high effect LED light source , soft light source , close to nature light
- \* To meet kinds of demands of lighting because of metal tube



903

LED desk lamp with magic colorful RGB

Power: 9W

Lamp brightness: >350Lm

LED type: 4014

Color box : 22.5\*17\*47CM

CTN box : 55.5\*47.5\*37CM 8PCS/CTN

Functions:

- \* Globoid base built-in red ,green ,blue LED bulbs to make the colorful living color light effect.
- \* Touch the color bar on the base to change the color of the living color light .
- \* When you touch the color key for 3seconds , the color will change automatically.
- \* With 5v power output port,can charge for mobile , mp3 or other DC 5v electronic devices
- \* 3-grade brightness touch dimmer
- \* DC 5V power supply.

TOP BRAND OF INTELLIGENT TABLE LAMP

Led Table Lamp



Z3

Blowing control night light with aluminum alloy bottom

Power: 0.4W

Lamp brightness: >30Lm

LED type: 2835

Color box : 7.3\*7.3\*21.5CM

CTN box : 38.5\*31\*45CM 40PCS/CTZ CTN

Functions:

- \* Night light
- \* Blowing control
- \* Brightness adjustable by the key



Z2

Blowing control night light

Power: 0.4W

Lamp brightness: >30Lm

LED type: 2835

Color box : 7.3\*7.3\*21CM

CTN box : 39\*39\*44.5CM 50pcs/CTN box

Functions:

- \* Night light
- \* Blowing control
- \* Brightness adjustable by the key

TOP BRAND OF INTELLIGENT TABLE LAMP

Led Table Lamp



Q18

Fragrance lamp inspired by the goose egg

Power: 10W

Lamp brightness: Without

LED type: 5050

Is being designed

Functions:

- \* The most fashionable touch control nature sound
- \* Natural sound + humidifier + colourful small night lamp
- \* All kinds of spray timing and small night light switch seven colors
- \* Fashion styling



M3

Ultra-thin base all metal structure led table lamp with VA LCD calendar display

Power: 10W

Lamp brightness: >400Lm

LED type: 4014

Color box : 52\*7\*15CM

CTN box : 54\*30\*33CM 8pcs/ctn

Functions:

- \* Aluminium alloy material' s arm ,beautiful oxidation color, durable using and keep long time fresh color on surface
- \* High definition AV LCD calendar display , much more clear
- \* Fashion and modern design , easy operation



TOP BRAND OF INTELLIGENT TABLE LAMP

Led Table Lamp



Q3

Ultra-thin plated edge lamp head, ultra-fine goose neck lamp arm, ultra-thin lamp base touch dimmer table lamp with rechargeable battery

Power: 5W

Lamp brightness: >150Lm

LED type: 3528

Color box : 185\*165\*270MM

CTN box : 52.5\*39.5\*56.5CM 12PCS/CTN

Functions:

- \* Ultra-thin base built-in 800mAh rechargeable lithium battery, convenient for travelling use.
- \* Ultra-thin and plated designing, looks upscale and light.
- \* 5000-6000K white light effect for the lamp.
- \* Flexible ultra-fine goose neck arm, can be adjusted to different angle as your luminance demand.
- \* 3-grade brightness touch dimmer.



Q7

LED eye-protection table lamp

Power: 7W

Lamp brightness: >230Lm

LED type: 4014

Color box : 49\*40.5\*48CM

CTN box : 47\*14.8\*7.4CM 15pcs/CTN

Functions:

- \* Using a sensitive 3-grade touch dimmer, easily and quickly adjust the brightness.
- \* Panel light source creates uniform soft light, no glare, relieve eye fatigue.
- \* 5V 1A USB power outlet, recharge for any digital device at any time.
- \* Product convenient storage, foldable lamp arm, easier to adjust to the best lighting angle.

TOP BRAND OF INTELLIGENT TABLE LAMP

Led Table Lamp



T2

DC12V flexible arm LED table lamp with touch dimmer and 3-C light modes

Power: 12W

Lamp brightness: >450Lm

LED type: 5730

Color box : 22\*19\*38.9CM

CTN box : 59.5\*46\*42CM 6PCS/CTN

Functions:

- \* 3-color temperature light modes: cold, warm and cold & warm mode.
- \* 5-grade brightness touch dimmer.
- \* With study mode, relax mode and natural mode.
- \* Flexible, free angle adjustable, the lamp arm up-down and left-right adjustable freely.
- \* DC12V power supply.



Z1

Multifunction rechargeable emergency LED bulb lamp with magnet

Power: 5W

Lamp brightness: >200Lm

LED type: 3528

Color box : 11.2\*9.6\*16.1CM

CTN box : 50\*47\*51CM 60PCS/CTN

Functions:

- \* 5000-6000K warm white high brightness light effect for outdoor travelling or camping use.
- \* With high brightness red warning light for emergency rescue.
- \* With ON/OFF press button, press the button the first time to turn on the lamp, press the button the second time to change to red warning light mode, press the button the third time to turn off the bulb lamp.
- \* Built in magnet in the base, can be absorbed on metal surface, easy to install.

NOTES & INSPIRATIONS

---

---

---

---

---

---

---

---

---

---

---

---

---

---

---

---

---

---

---

---

---

---

---

---

---